

Auchencairn Local Place Plan



2025-2035

Prepared by Auchencairn Community Council with local partners and residents.

This Local Place Plan is a community-led document setting out proposals for the development and use of land in and around Auchencairn over the next 10 years.

Table of Contents

1. In brief	4
What this Local Place Plan does.....	4
What this Local Place Plan does not	4
2. Vision and outcomes.....	5
Vision.....	5
Outcomes we will work towards	5
3. How this plan meets statutory and registration requirements	6
4. About Auchencairn	6
Key community assets	7
5. Community body and plan area.....	8
Community body.....	8
Plan area boundary	9
6. Evidence and engagement.....	9
6.1 Key Themes from the community survey	12
7. Policy context - having regard to the Development Plan	16
8. Spatial strategy Design principles for new development	17
9. Statement of proposals (development and use of land)	18
P1 - Small-scale affordable housing to meet local needs	18
P2 - Local workshop / workspace provision.....	18
P3 - Active travel and safer routes.....	19
P4 - Village centre public realm and wayfinding.....	20
P5 - Nature network and biodiversity links.....	20
P6 - Community buildings energy and resilience.....	21
P7 - Better public transport access and information	21
P8 - Digital connectivity to support rural living	21
P9 - Play, recreation, and youth provision.....	22
P10 - Protecting character, heritage and landscape settings	22
10. Delivery plan (2025-2035).....	23
Appendices.....	24
Appendix A-Spatial Maps.....	25
Map 1: Local Place Plan Area Boundary	25

Map 2: Proposals Map (P1-P10) 26

Map 3: Movement and Connections (walking, cycling, bus stops)..... 27

Map 4: Community Assets Map..... 28

..... 28

Appendix B - Photos of poster evidence..... 29

Appendix C – Proposal Schedule..... 32

Appendix D-Delivery Plan summary (from community priorities) 33

Appendix E – Information Notice..... 35

Appendix F – Detailed engagement results 37



1. In brief

A Local Place Plan (LPP) is a document prepared by a local community in Scotland. It sets out that community's vision and aspirations for its future and allows a community to contribute to a planning authority's development plan for the wider area.

This LPP for Auchencairn was prepared in 2025 by representatives of local community organisations with input from the wider community.

We thank the residents of Auchencairn who contributed their time, views, and ideas to this LPP. Your voices are at the heart of this Plan.

What this Local Place Plan does

- Sets out a community-led vision and a set of priority proposals for Auchencairn over the next 10 years, informed by local engagement and evidence.
- Identifies where action is needed and who might lead delivery (community, council, partners, funders).
- Provides a clear basis for Dumfries and Galloway Council to have regard to the plan in future decisions.

What this Local Place Plan does not

- It is not a planning application and does not grant permission for development.
- Proposals are non-binding and will require further feasibility work, funding, landowner agreement, and (where relevant) future consultation.

2. Vision and outcomes

Vision

In 2035, Auchencairn will be a thriving, welcoming and low-carbon rural community where local people can live, work and grow up; where the village centre and community facilities are resilient; where nature and landscape are enhanced; and where change happens at a pace and scale that protects the character of the place.

Outcomes we will work towards

- More homes that meet local needs (including social, affordable, and accessible options) so young people and families can stay and the school can flourish.
- More local opportunities to work and trade, including small workshops and support for local enterprise.
- Safer and more accessible movement around the village, with new and improved paths and better links to services.
- A stronger village centre and community hub, with a greener public realm, clearer wayfinding, and improved accessibility.
- Healthier nature networks - connected habitats, improved biodiversity, and better access to the outdoors for everyone.
- Lower running costs and higher resilience for key community buildings through energy efficiency and practical measures for emergencies.

3. How this plan meets statutory and registration requirements

This Local Place Plan has been prepared by a recognised community body and includes a clearly defined plan area boundary and a statement of proposals for the development and use of land. It is designed to support registration on Dumfries and Galloway Council’s Local Place Plan Register and to be a practical tool for delivery.

Requirement	Where it is addressed	Evidence / appendix
Plan area boundary map	Section 5	Appendix A (boundary map)
Statement of proposals (development / use of land)	Sections 8-9	(proposal schedule) + Appendix A (proposals map 2 and 3)
Engagement	Section 6	Appendix B

4. About Auchencairn

This LPP covers the village of Auchencairn and its surrounding coastline, and countryside (map on page 20. Appendix A) Auchencairn is a small rural community with a powerful sense of identity, volunteering, and neighborliness The village benefits from valued facilities and an exceptional natural setting, and residents consistently describe it as a safe and welcoming place to live.



Key community assets

- Facilities: primary school, community hall, shop, café, local childcare/nursery, garage, and church.

Key community Facilities within Auchencairn.

- Spaces: Play Parks, formal and informal gardens, community allotments, community gardens, easy access to surrounding countryside and coastline Heritage.
- strong and long local history and folklore. Natural Environment: coastline, hills, scenic areas, and viewpoints



5. Community body and plan area

Community body

This Local Place Plan is proposed for registration by Auchencairn Community Council, the community body responsible for preparing the plan. The plan was developed by a small working group with representatives from local organisations including Auchencairn Climate Transition, Balliol Court Tenants Association and Auchencairn Initiative, with input from residents and community stakeholders.

Dumfries and Galloway Council officers provided guidance during preparation, and the working group aimed to complete the plan by January 2026.

Some local communities in Galloway have been supported by specialist consultants in preparing their LPPs. For timetabling reasons, this support was not available to Auchencairn and the LPP has been prepared using community resources only.

Plan area boundary

The Local Place Plan area covers the village of Auchencairn and surrounding coastline, and countryside within the Auchencairn Community Council boundary. A definitive boundary map for registration is provided in Appendix A. A location plan and proposals map are provided in Appendix A.

6. Evidence and engagement

Community engagement has been central to the preparation of this Local Place Plan. Engagement has been proportionate to the scale and purpose of the Plan and has sought to capture a wide range of local views to inform priorities and proposals.

A range of engagement methods were used, including open meetings, informal discussions, and the Place Standard Tool. The Place Standard Tool is a nationally recognised framework that provides a structured way of assessing how a place performs across fourteen themes covering physical, social and environmental aspects of place.

The Place Standard Tool was made available online and promoted locally through community networks, events and informal engagement. A total of 124 responses were received, of which fifty-six provided complete ranked scores across all fourteen themes. The results have been analysed and summarised in the tables and figures below.

The ranked scores show variation across themes. Some aspects of Auchencairn were rated more positively, while others were identified as areas where respondents felt improvements could be made. Higher-scoring themes included natural space, identity and belonging, and feeling safe. Lower-scoring themes included movement and transport, traffic and parking, and housing.

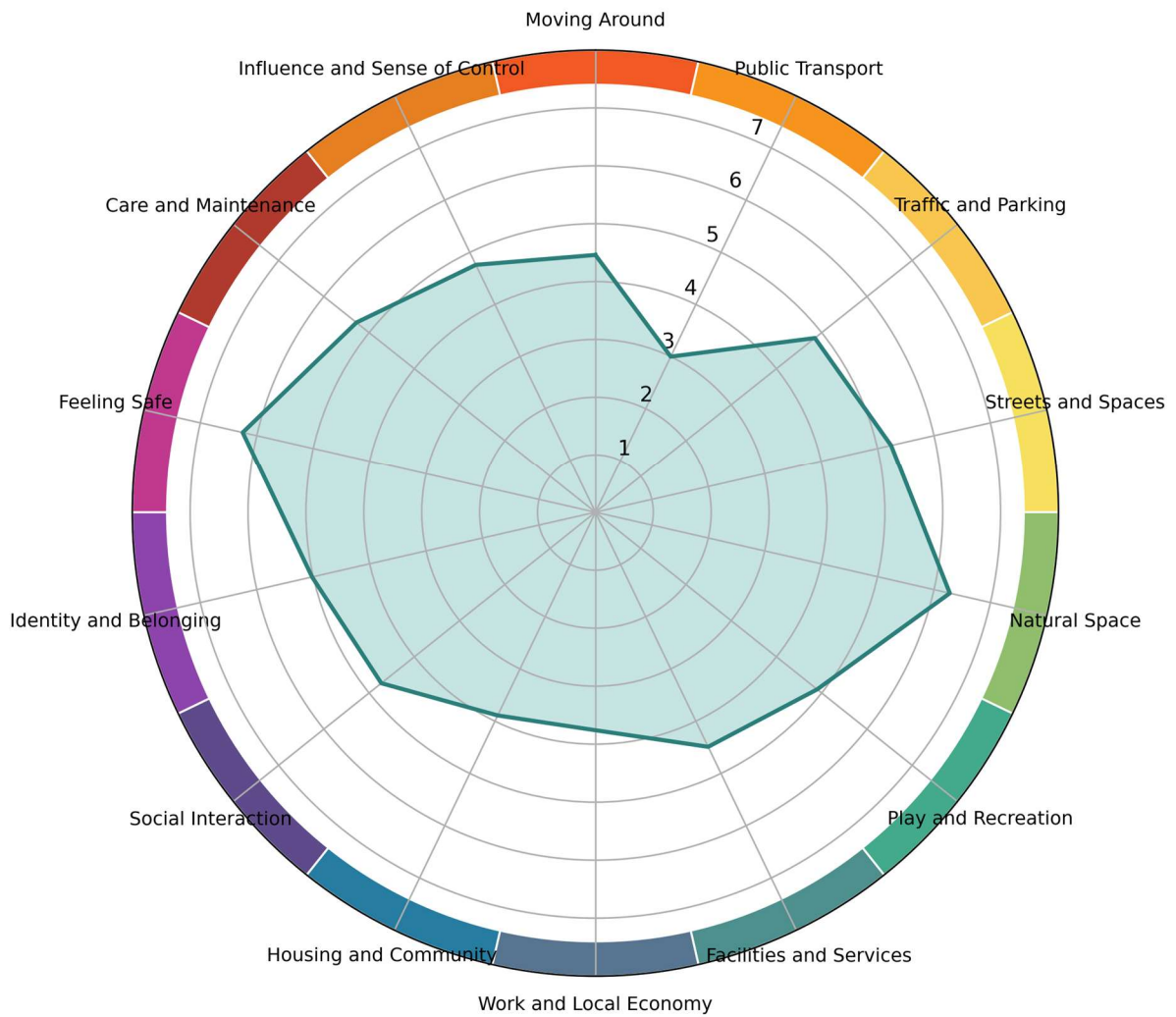
The Community Council's view is that there is overall support for the Local Place Plan as a community-led statement of priorities for Auchencairn, while recognising that the level and nature of support varies across

individual proposals and themes. That view is based on the Place Standard responses, comments received through community engagement, primary school engagement, and representations received during the formal consultation period.

Following the most recent 28-day consultation on the draft Local Place Plan, representations were considered by the Local Place Plan Working Group and minor amendments were made to improve balance, clarity and accuracy. In particular, wording has been refined where necessary to reflect that the evidence shows a range of views on some matters, including housing, workspace and movement, while retaining the overall direction of the Plan.

These findings have been used to identify the key issues and opportunities facing Auchencairn and have directly informed the vision, priorities and proposals set out in this Local Place Plan. The proposals in Section 9 (P1–P10) provide a focused and proportionate response to the evidence gathered through engagement, while recognising the role of a Local Place Plan in guiding future decision-making rather than determining specific development outcomes. Supporting engagement material is provided in Appendix B and detailed Place Standard scores are provided in Appendix F.

Place Standard Tool - Auchencairn Summary of Ranked Results (mean scores)



Rank	Theme	Mean	N	Positive / Negative (%)
1	14: Public Transport	3.0	61	43 / 57
2	13: Work and Local Economy	3.76	55	58 / 42
3	12: Housing and Community	3.89	55	60 / 40
4	11: Moving Around	4.46	67	79 / 21
5	10: Facilities and Services	4.49	57	74 / 26
6	9: Social Interaction	4.73	55	84 / 16
7	8: Influence and Sense of Control	4.76	54	85 / 15
8	7: Traffic and Parking	4.85	62	85 / 15
9	6: Play and Recreation	4.9	59	83 / 17
10	5: Identity and belonging	5.02	55	87 / 13
11	4: Streets and Spaces	5.24	59	88 / 12
12	3: Care and Maintenance	5.28	54	89 / 11
13	2: Feeling Safe	6.25	55	98 / 2
14	1: Natural Space	6.28	61	93 / 7

6.1 Key Themes from the community survey

Moving Around

While the village offers a pleasant environment with good walking opportunities, respondents also identified concerns about public transport provision and about infrastructure for pedestrians, cyclists, and those with disabilities. Survey responses and comments highlighted support for better road maintenance, safer walking and cycling routes, and more reliable and accessible public transport options, although these priorities were not expressed uniformly by all respondents.

Public Transport

The results of the survey show that the community values public transport but that it faces significant challenges in meeting the community's need for

reliable, frequent, and well-connected services. Many feel that current bus provision does not allow easy commuting or access to larger towns.

Traffic and Parking

Residents consider parking arrangements to be adequate though there are concerns about congestion around the village centre and the store. While the 20mph limit is appreciated there are worries about vehicles ignoring the speed limits, particularly tractors and agricultural vehicles. The community has a range of suggestions for improvement in parking arrangements, speed management, and enforcement.

Streets and Spaces

The community's green and open spaces are well appreciated, as are community spaces such as the shop, hall, and parks, the attractive "look and feel" of the village and its sense of community. Respondents also identified several areas for improvement, including more play equipment and facilities for older children. Comments and survey responses also highlighted interest in workshop space for small-scale business activity, more housing for young families, and better maintenance and tidiness of the village environment.

Natural Space

The community values highly its surrounding natural environment to which many residents have ready access, but some residents identified a need for specific measures to improve arrangements for accessibility for those with mobility issues. Some concerns were expressed about changes in the local environment arising from changing agricultural practice.

Play and Recreation

While survey results show an appreciation of the facilities already in the community such as play parks residents have several concerns about the condition, safety, and accessibility of the facilities. There also appears to be a well-recognised lack of age-specific recreational opportunities for older children and younger adults. Some respondents sought additional facilities such as tennis courts and a community pool.

Facilities and Services

There appears to be a general appreciation of the community facilities and the way in which they are managed. The village shop, the primary school,

nursery, and community hall are particularly valued. Respondents also highlighted affordable housing, care services for older people, public transport and accessibility as important issues for the future, with some comments linking housing provision to retaining young families and supporting the school roll. Suggestions were also made that mobile services could be made available in some instances.

Work and Economy

In this topic area the data paints a picture of a village with a powerful sense of community, but which faces challenges in relation to the limited availability of job opportunities, especially for younger people. Survey responses and comments indicated interest in diversifying the local economy, supporting local businesses, and exploring whether small workshops or flexible workspace could help support enterprise and micro-business activity within the community.

Housing and Community

A key theme emerging from the survey data on this topic is the challenge facing the community related to housing availability and affordability, particularly for younger generations and their families. There were also concerns about the number and place of "second homes" in the community. Results suggest that many residents appreciate the present mix of housing, while a significant number of respondents identified affordable and appropriate housing as an important issue for the community's longer-term sustainability.

Social Interaction

Auchencairn is fortunate to have a community shop that is highly valued in survey data for all ages. Residents generally appear to consider that social interaction in the community is good with responses covering a wide age range. While interaction amongst older people appears positive respondents identified a need for more opportunities for younger people. More leisure facilities, including a pub, are desired by some though others highlight the need for improvement in existing infrastructure.

Identity and Belonging

Many respondents reported a powerful sense of community, friendliness, and helpfulness, but some were concerned that not all sectors of the community were equally valued and welcomed. Comments highlighted

interest in embracing further the village's history and heritage, while some respondents also linked better housing opportunities for younger people with long-term belonging and community sustainability.

Feeling Safe

Overall respondents over a wide age range reported feeling safe within the community. However, there were several comments about areas for improvement including reduction in vehicle speed and preventing the use of mobile phones (particularly in tractors) when drivers are travelling through the village. Stronger enforcement measures were desired as were improved pathways and walkways.

Care and Maintenance

Many respondents praised the village's cleanliness, and tidiness, noting well-maintained gardens and green spaces. A sense of community pride and spirit was identified with residents, householders and volunteers actively contributing to the village's maintenance and appearance. There were also recommendations for improvement including better management of road surfaces, weeding and maintenance of footpaths and reduction in litter, especially from passing motorists.

Influence and Sense of Control

Influence and control was recorded on a scale from 1-7 with many respondents scoring in the range 4-7 and commending the local consultative processes. But some recorded a sense of little influence. Concerns were the perceived remoteness of the regional planning authority and the delivery of results from village consultations. Some respondents felt that more effort should be made to involve less-vocal community members and others commented on the difficulty of attracting new volunteers.

7. Policy context - having regard to the Development Plan

The proposals map is intended to guide future decision-making, including the preparation of the Local Development Plan, and to support further assessment and engagement rather than to predetermine specific development outcomes.

In preparing this Local Place Plan, regard has been had to the statutory development plan and relevant national and local planning policy. The proposals set out in this plan are intended to complement and inform future planning policy rather than to duplicate or replace it.

The key documents considered in the preparation of this Local Place Plan include:

- National Planning Framework 4 (NPF4)
- The Dumfries & Galloway Local Development Plan
- Relevant local and community strategies where appropriate

The proposals in this Local Place Plan align with the overarching spatial strategy of NPF4, including support for sustainable, place-based development; the delivery of homes that meet local needs; the protection and enhancement of the natural and historic environment; and the promotion of active travel and local living.

Where the Local Place Plan provides additional local detail or emphasis, this reflects the specific characteristics, opportunities, and priorities of Auchencairn. Any future development proposals arising from this Local Place Plan would continue to be assessed against the statutory development plan and other material considerations.

This Local Place Plan is intended to inform people of the preparation of future local development plans and the assessment of planning applications, alongside other relevant material considerations.

This Local Place Plan focuses on change in the right places, protects what makes Auchencairn special, and safeguards land for community priorities. The spatial strategy has three parts:

- Protect and enhance the village's landscape setting, coastline and biodiversity networks, and respect heritage and local character.
- Strengthen the village centre and key community assets (shop, hall, school, play areas) as the heart of everyday life.
- Enable small-scale, well-designed development that meets local needs - especially affordable homes, local workspace, and safe movement routes.

8. Spatial strategy Design principles for new development

- **Scale and character:** development should be small-scale, compatible with the existing village form, and use high-quality materials that reflect local character.
- **Climate and energy:** prioritise energy efficiency, low-carbon heating, and designs that reduce running costs for residents.
- **Biodiversity:** protect existing habitats and deliver measurable enhancements (native planting, habitat connections, wildlife-friendly boundaries).
- **Movement:** prioritise safe walking and cycling connections and reduce conflict between vehicles and pedestrians, especially near the village centre and school.
- **Accessibility:** ensure routes and public spaces are inclusive for people with mobility impairments and families with buggies.

- Drainage and flood resilience: use sustainable drainage and avoid increasing surface water risk.

9. Statement of proposals (development and use of land)

The proposals below set out the priorities and opportunities that this Local Place Plan identifies for further work on the ground. They are mapped in Appendix A and summarised in the Proposal Schedule (Appendix C).

Proposals may require feasibility work, landowner agreement, funding, and further consultation.

P1 - Small-scale affordable housing to meet local needs

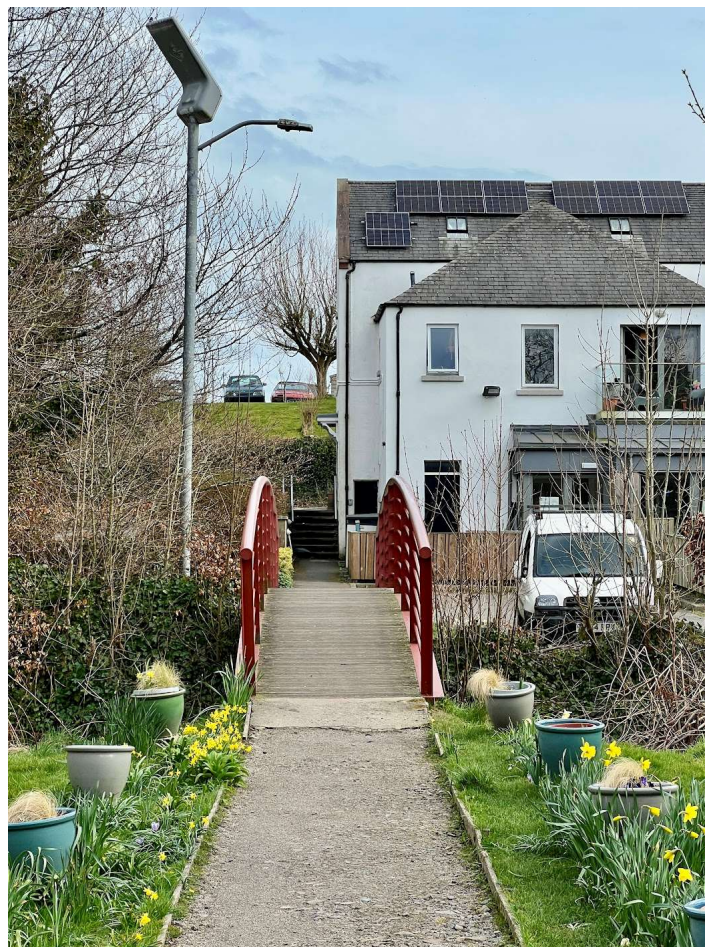
- new housing should be supported on appropriate sites within or adjoining the existing settlement, subject to design quality and local character.
- Safeguard and progress a small “housing cluster” opportunity for social and affordable homes (subject to feasibility and consents) to support community sustainability and help retain/attract families.
- Work with landowners and Dumfries and Galloway Council to identify the most suitable site option(s), taking into account access, drainage, landscape, and biodiversity constraints.
- Ensure new homes are designed for long-term affordability and accessibility, energy efficient low-carbon heating, designs that reduce running costs for residents and are of a high quality.

P2 - Local workshop / workspace provision

- Support delivery of at least one small workshop or flexible workspace unit to enable home-grown enterprise, repair and maker activity, and micro-business start-up.
- Identify potential sites/buildings and partners, including options connected to existing community assets where appropriate.
- Design should minimise impacts on neighbours and ensure safe access/parking.

P3 - Active travel and safer routes

- Deliver a programme of path improvements and new links (up to approximately 2 km in total) prioritising safe walking and wheeling routes to key facilities and to the wider path network.
- Improve crossing points and tackle accessibility barriers for people with mobility issues.
- Work with roads/paths authorities and landowners to agree alignments and maintenance responsibilities.



Pedestrian footbridge providing local connectivity within the village.

P4 - Village centre public realm and wayfinding

- This includes new and improved walking and cycling routes within and connecting the settlement, coastline, and surrounding countryside.
- Strengthen the village centre through better signage/wayfinding, planting and small public realm improvements that make the centre welcoming and legible for residents and visitors.
- Address pinch points and localised traffic/parking friction where practical, while maintaining access for deliveries and emergency vehicles.
- Use improvements to reinforce identity and heritage.

P5 - Nature network and biodiversity links

- Enhance and connect habitats (targeting at least 1 km of linked habitat improvement) through native planting, hedgerow management, and small-scale projects that support pollinators and wildlife.



Burn and surrounding green corridor contributing to biodiversity and landscape character.

- Improve access to nature where appropriate, including inclusive routes and information.
- Work with local land managers to respond to changes in agricultural practice and landscape management.

P6 - Community buildings energy and resilience

- Improve energy efficiency and resilience of key community buildings (starting with the village hall) with a target of reducing energy costs by around 20% over time, subject to surveys and funding.
- Investigate building fabric upgrades, controls, and practical resilience measures for outages/extreme weather.
- Use improvements to support the hall as a community hub and reduce operational costs.

P7 - Better public transport access and information

- Work with transport providers and the Council to improve service reliability, connections, and accessibility, recognising community concerns about current provision.
- Deliver practical “quick wins” such as improved information, safe waiting areas, and links from the village to the neighbouring towns and Dumfries itself.
- Maintain an evidence log of service issues to support ongoing dialogue and funding bids.

P8 - Digital connectivity to support rural living

- This includes support for small-scale employment uses within the settlement or in appropriate rural locations.
- Support improvements to broadband and mobile coverage where gaps exist, as an enabler for homeworking, business, and access to services.
- Promote community-led reporting and liaison with providers and explore shared solutions if appropriate.

P9 - Play, recreation, and youth provision

- Improve play and recreation opportunities
- addressing concerns about condition, safety and age-appropriate facilities for older children and young adults.
- Prioritise inclusive play and multi-use spaces that can be used year-round.
- Link improvements to active travel routes and safe movement.



Local play area providing opportunities for recreation and outdoor activity.

P10 - Protecting character, heritage and landscape settings

- New housing should be supported on appropriate sites within or adjoining the existing settlement, subject to design quality and local character.
- Safeguard what makes Auchencairn special by promoting sensitive design, protecting key views, reinforcing local identity, and belonging.
- Use heritage interpretation and small-scale initiatives to celebrate local history and folklore.
- Encourage development that contributes positively to village appearance, cleanliness, and care/maintenance.

10. Delivery plan (2025-2035)

The Delivery Plan sets out who could lead on each theme, indicative timescales and how success might be measured. It is intended to be a live tool for action and funding applications and can be found in appendix D.



Community members taking part in outdoor social and engagement activities.

Appendices

The appendices contain evidence and supporting material. They are part of the Local Place Plan package but can be read separately from the main plan.

The proposals map in Appendix A illustrates the spatial expression of Proposals P1–P10 and is intended to be read alongside the supporting text in Section 9.

The map identifies broad areas, indicative search areas, and potential route corridors to show where different proposals may apply. These are not site allocations and do not define precise boundaries.

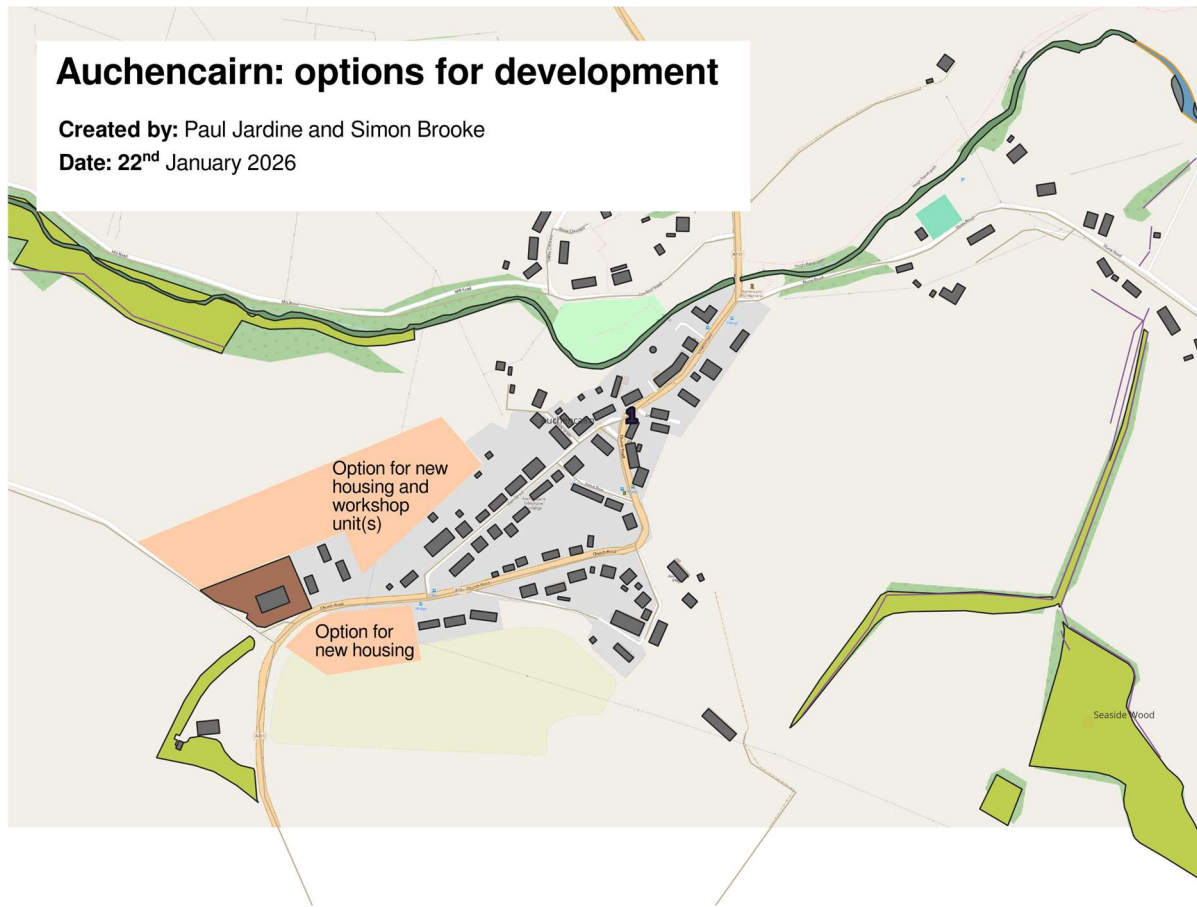
Housing and employment proposals are shown as indicative search areas within or adjoining the existing settlement. Movement and access proposals are illustrated as indicative routes or corridors. Proposals relating to landscape, natural environment, coastal access, and local character are shown as area-based principles.

Appendix A-Spatial Maps

Map 1: Local Place Plan Area Boundary



Map 2: Proposals Map (P1-P10)



Map 3: Movement and Connections (walking, cycling, bus stops)

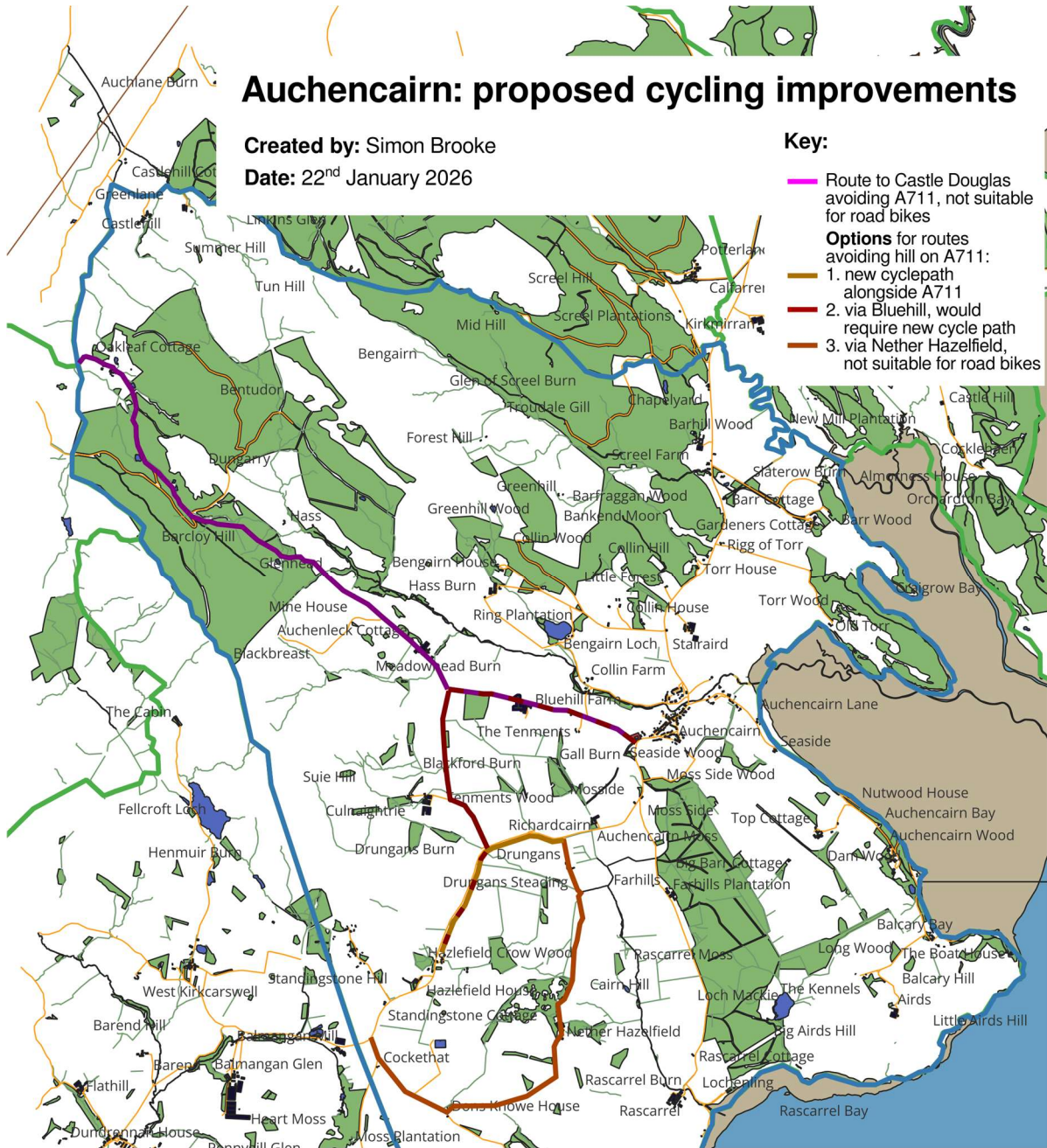
Auchencairn: proposed cycling improvements

Created by: Simon Brooke

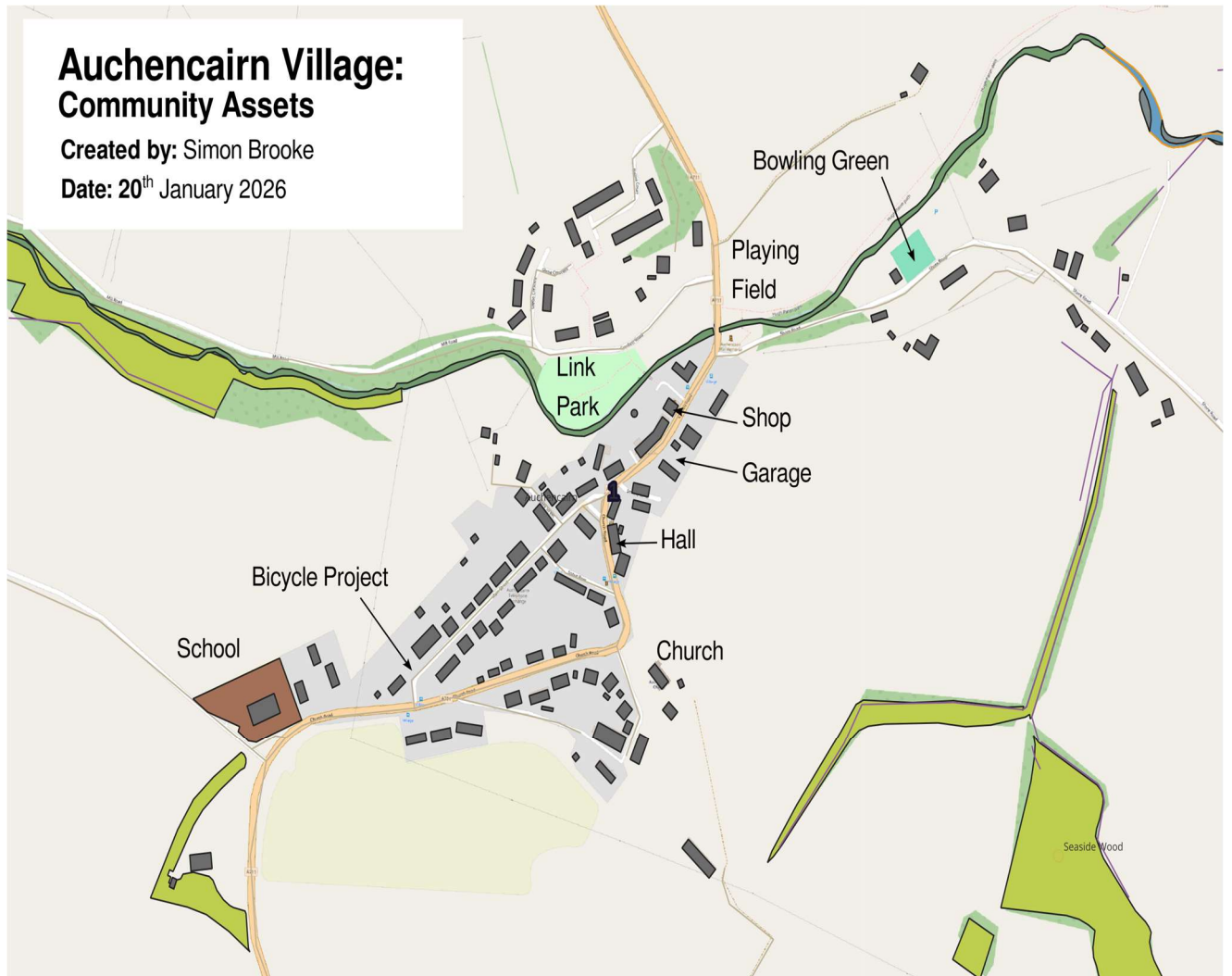
Date: 22nd January 2026

Key:

- Route to Castle Douglas avoiding A711, not suitable for road bikes
- Options for routes avoiding hill on A711:**
- 1. new cyclepath alongside A711
- 2. via Bluehill, would require new cycle path
- 3. via Nether Hazelfield, not suitable for road bikes



Map 4: Community Assets Map



Appendix B - Photos of poster evidence

have your say on planning

Auchencairn Community Council has started work on preparing a **Local Place Plan** for Auchencairn, a document which will feed into Dumfries and Galloway Council's Local Development Plan. **This is your chance to influence planning policy for our area.**

As a first exercise, we are using the Scottish Government's **Place Standard Tool**.

You can access the tool to record your views at <https://tinyurl.com/auchencairn-lpp>

by scanning this QR code:



or by coming to the village shop any Wednesday in April between 2 and 5pm



have your say on planning

you are invited to a drop in public consultation in the village hall on saturday 30th May, between 11 am and 1 pm

Auchencairn Community Council has started work on preparing a **Local Place Plan** for Auchencairn, a document which will feed into Dumfries and Galloway Council's Local Development Plan. **This is your chance to influence planning policy for our area.**

If you can't attend, you can complete the consultation online at <https://tinyurl.com/auchencairn-lpp> or by scanning this QR code:



auchencairn's local place plan is **almost** ready

This is your **last chance** to influence it. Consultation closes at Midnight on Sunday, 14th December.

Auchencairn Community Council Local Place Plan Working Group has prepared a **Local Place Plan** for Auchencairn, a document which will feed into Dumfries and Galloway Council's Local Development Plan.

read the
plan

<https://www.auchencairn.org/lpp>



give us
feedback

<https://www.auchencairn.org/lpp-feedback>



SECOND ROUND OF PUBLIC CONSULTATION

AUCHENCAIRN LOCAL PLACE PLAN

**SATURDAY OCTOBER 4TH
IN THE MURRAY HALL**

DOORS OPEN 10:30 AM – 13:30 PM

**TRANSPORT
HOUSING**

GUEST SPEAKERS



**TEA, COFFEE,
AND TRAYBAKES
PROVIDED**

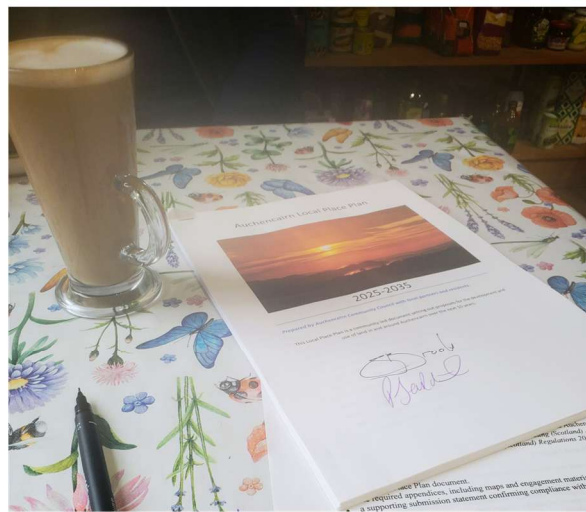
**GRANT COLTART
SWESTRANS**

**MIKE STAPLES
SOUTH OF SCOTLAND
HOUSING PARTNERSHIP**



Auchencairn's Local Place Plan is now complete!

After more than a year of work, Auchencairn's Local Place Plan is now complete. You are invited to download, read, and comment on the plan.



Read the plan:



<https://www.auchencairn.org/lpp>

Review the plan:



<https://www.auchencairn.org/lpp-feedback-2>

Appendix C – Proposal Schedule

Ref	Proposal	Type (development / use / safeguard)	Indicative location (see Map D)	Lead/partners	Key dependencies
P1	Small-scale affordable housing	Development / safeguard	Site option(s) to be confirmed	Community Council + partners + Council	Landowner agreement; feasibility; planning; funding
P2	Local workshop / workspace	Development / change of use	To be confirmed	Community Council + local businesses	Site identification; access; funding
P3	Active travel links	Use / infrastructure	Routes to be confirmed	Community Council + Council roads/paths	Landowner permissions; design; maintenance
P4	Village centre public realm	Use / public realm	Village centre	Community Council + Council + funders	Design; consents; funding; maintenance
P5	Biodiversity links	Use / enhancement	Habitat corridors to be confirmed	ACT + land managers	Agreement; long-term management
P6	Energy and resilience upgrades	Change / upgrade	Village Hall	Community council + ACT	Building surveys; funding
P7	Public transport improvements	Service / infrastructure	Bus stops and connections	Community Council + transport operators	Operator agreement; evidence base
P8	Digital connectivity	Service	Area-wide	Community Council + providers	Provider investment; community reporting
P9	Play and recreation	Upgrade	Play areas / multi-use spaces	Community Council + school/community groups	Design; safety; funding; maintenance
P10	Character and heritage	Safeguard / use	Area-wide	Community Council + residents	Ongoing stewardship; small project funding

Appendix D-Delivery Plan summary (from community priorities)

Outcome	Indicator	Baseline	Target / direction
Homes that meet local needs	Number of locally led affordable homes progressed	TBC	Progress P1 to delivery or consent by 2032
Local economy	Number of new workspace units created	TBC	At least one workspace unit in operation by 2032
Safer movement	Length of path improvements delivered	TBC	Up to ~2 km delivered by 2032, subject to feasibility
Nature network	Length of habitat connections improved	TBC	At least ~1 km improved/connected by 2032
Resilient hub	Hall energy running costs	TBC	Approx 20% reduction over time, subject to audits
Village centre quality	Wayfinding/planting improvements delivered	TBC	Implement priority measures by 2028

Theme	Lead body / partners	Timescale	Success measure
A Housing Cluster	Community Council / Registered Social Landlords / South of Scotland Community Housing	2025-2032	Complete feasibility and site identification; support delivery of social and affordable homes by 2032 (subject to funding and landowner agreement).
B Workshops	Auchencairn Initiative / Business Gateway	2025-2031	At least one workshop / unit operating and used by local enterprises.
C Active Travel Paths	Community Council/ Auchencairn Climate Transition / Sustrans / DGC / SWestrans	2025-2032	Deliver up to 2 km of new/improved paths (subject to consents and funding).
D Biodiversity Links	Auchencairn Climate Transition / NatureScot	2025-2035	At least 1 km of habitat corridor enhanced/connected through community projects.
E Energy and Resilience	Auchencairn Climate Transition / Local Energy Scotland	2025-2035	Reduce community hall energy costs by around 20% through efficiency and local energy measures (subject to funding).
F Village Centre	Community Council / Auchencairn History Society / DGC Roads and Assets	2025-2030	Improved signage and wayfinding for community buildings and heritage sites; visible improvements to village planting/planters.

Appendix E – Information Notice

Information Notice under Regulation 4 of the Town and Country Planning (Local Place Plans) (Scotland) Regulations 2021

Notice is hereby given that the Auchencairn Local Place Plan has been prepared by the Auchencairn Community Council

In accordance with Regulation 4 of the Town and Country Planning (Local Place Plans) (Scotland) Regulations 2021, Information Notices were published to inform the community and relevant consultees that a Local Place Plan was being prepared and that the revised draft Local Place Plan was subject to formal consultation.

The Information Notice was first published on 15th of November and the period for representations ran for not less than 28 days, closing at midnight on 14th of December. A further 28-day consultation was later undertaken on the revised draft Local Place Plan prior to submission and ran from 8th of February 2026 to 9th of March 2026

The Information Notice was made publicly available by the following means:

- publication on the Auchencairn community website.
- display within the village.
- distribution through community networks
- email to neighboring Community Councils Dundrennan, Buittle, Kirkcudbright and Kelton
- ward councilors, Andy McFarland, John Denerly, Dougie Campbell
- direct notification to relevant organisations, including Dumfries and Galloway Council.

During the consultation periods, the community was invited to make representations on the preparation of the Local Place Plan.

Representations received were considered by the Local Place Plan Working Group and informed minor amendments to the final Local Place Plan to improve balance, clarity and accuracy, while retaining the overall direction of the Plan.

This Information Notice is provided to accompany the submission of the Auchencairn Local Place Plan to Dumfries and Galloway Council. Email evidence below

Dear Community Councillors / Ward Councillors,

I'm writing to give you formal notice of a 28-day notification period in relation to the proposed Auchencairn Local Place Plan for the Auchencairn Community Council area.

Where you can view the plan and supporting information

- Online: please use this link to view the Local Place Plan by clicking on the blue writing at the top of the response form before filling in the form [LiberaForms!](#)
- In person this can be arranged to be view in person at the Murray hall my prior appointment
- Contact for questions or alternative formats: Paul Jardine
email Paj041512@gmail.com

28-day period for comments / representations

The 28-day period runs from 8th of February 2026 to the 9th of march 2026

If you wish to make comments or representations, please submit them by 9th of march 2026 using one of the following methods:

- Email: paj041512@gmail.com (subject line: "Auchencairn Local Place Plan – Representation")
- Online form [LiberaForms!](#)

Please include your name and (if relevant) the organisation you represent, and clearly set out the points you wish to raise. Where possible, reference the relevant section, proposal, or map within the plan.

How your comments will be used

All representations received within the 28-day period will be considered as part of the next steps in the process. Information will be handled in line with applicable data protection requirements.

If you have any questions about the plan, the notification period, or how to respond, please contact myself on the details below

Kind regards,
Paul Jardine
Auchencairn Community Councillor
Auchencairn Community Council
paj041512@gmail.com

Appendix F – Detailed engagement results

Natural Space

Theme	1: Natural Space
Mean	6.28
Valid responses (N)	61
Positive (%)	93
Negative (%)	7

Feeling Safe

Theme	2: Feeling Safe
Mean	6.25
Valid responses (N)	55
Positive (%)	98
Negative (%)	2

Care and Maintenance

Theme	3: Care and Maintenance
Mean	5.28
Valid responses (N)	54
Positive (%)	89
Negative (%)	11

Streets and Spaces

Theme	4: Streets and Spaces
Mean	5.24
Valid responses (N)	59
Positive (%)	88
Negative (%)	12

Identity and belonging

Theme	5: Identity and belonging
Mean	5.02
Valid responses (N)	55
Positive (%)	87
Negative (%)	13

Play and Recreation

Theme	6: Play and Recreation
Mean	4.9
Valid responses (N)	59
Positive (%)	83
Negative (%)	17

Traffic and Parking

Theme	7: Traffic and Parking
Mean	4.85
Valid responses (N)	62
Positive (%)	85
Negative (%)	15

Influence and Sense of Control

Theme	8: Influence and Sense of Control
Mean	4.76
Valid responses (N)	54
Positive (%)	85
Negative (%)	15

Social Interaction

Theme	9: Social Interaction
Mean	4.73
Valid responses (N)	55
Positive (%)	84
Negative (%)	16

Facilities and Services

Theme	10: Facilities and Services
Mean	4.49
Valid responses (N)	57
Positive (%)	74
Negative (%)	26

Moving Around

Theme	11: Moving Around
Mean	4.46
Valid responses (N)	67
Positive (%)	79
Negative (%)	21

Housing and Community

Theme	12: Housing and Community
Mean	3.89
Valid responses (N)	55
Positive (%)	60
Negative (%)	40

Work and Local Economy

Theme	13: Work and Local Economy
Mean	3.76
Valid responses (N)	55
Positive (%)	58
Negative (%)	42

Public Transport

Theme	14: Public Transport
Mean	3.0
Valid responses (N)	61
Positive (%)	43
Negative (%)	57

Primary School Engagement Results

The primary school contributed views and ideas as part of plan preparation. Summary scoring tables are reproduced below with short summary.

Primary School Engagement: Transport and Movement

Score	Count
1	1
2	0
3	1
4	1
5	1
6	2
7	5

Children generally felt that Auchencairn is easy and safe to get around, with many walking, cycling, or travelling by car or bus. Cycling and walking were commonly mentioned as enjoyable and safe, particularly because traffic levels are low. Bus services were viewed positively by some children, though concerns were raised about reliability, especially for school transport. Road condition issues, particularly potholes, were mentioned repeatedly. Overall, responses indicate that while transport options are available and perceived as safe, reliability and road maintenance are important issues for children.

Primary School Engagement: Environment and Outdoor Spaces

Score	Count
1	1
2	0
3	0
4	3
5	2
6	1
7	5

Children expressed strong appreciation for Auchencairn’s outdoor environment, describing it as clean, quiet, and well cared for. Parks and open spaces are used regularly, particularly after school and during school hours. While children value the amount of green space available, many felt that play areas would benefit from additional or more inclusive equipment, particularly for older children. Suggestions included improved paths and enhanced play facilities. Overall, the outdoor environment is seen as a positive feature of the village, with scope for improvement to increase use and inclusiveness.

Primary School Engagement: Facilities and Services

Score	Count
1	2
2	0
3	0
4	1
5	0
6	0
7	6

Children spoke positively about village facilities, particularly the village shop, school, parks, and village hall. The shop was frequently mentioned as an important and well-liked local service. Parks and play areas are widely used, though children identified opportunities for improvement, including additional play equipment and youth-focused activities such as clubs. When considering the future, some children felt they might move elsewhere for work, while others expressed strong attachment to the village and its facilities. Overall, facilities are valued and well used, with interest in further activities for young people.

Primary School Engagement: Sense of Belonging

Responses indicate a strong sense of belonging among children, with many describing Auchencairn as friendly, welcoming, and safe. Children frequently mentioned kindness, friendliness, and feeling accepted by others in the village. Both long-term residents and more recent arrivals reported feeling part of the community. While a small number of comments reflected occasional social difficulties, the overall picture is of a close-knit and supportive community where children feel they belong. No dot scores were recorded for this question; responses were qualitative only.