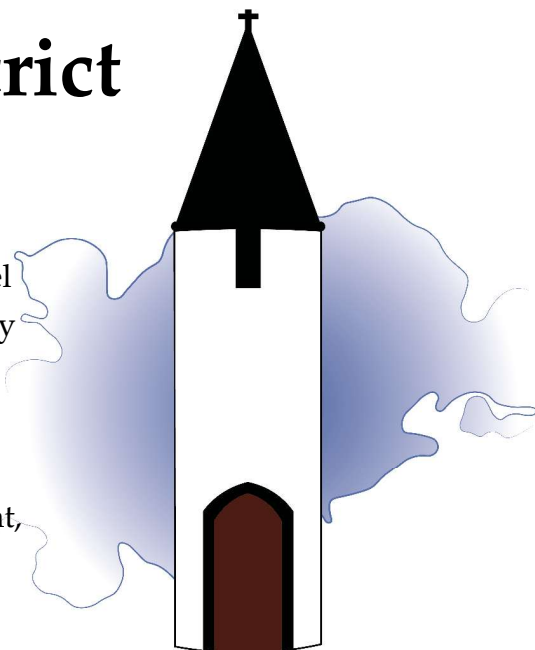


**Crossmichael & District Community Council
Local Place Plan
2025-2035**



Crossmichael and District Local Place Plan

This Local Place Plan process has been led by Crossmichael and District Community Council but the whole community of Crossmichael has come together to create a Local Place Plan that reflects our shared vision for the future of our village. This plan outlines our priorities and aspirations for improving our community, enhancing our environment, and promoting well-being in Crossmichael parish.



As the body responsible for producing this Local Place Plan, Crossmichael Community Council confirms that it has been prepared having regard to all relevant local and national planning legislation, as outlined in more detail in the Supporting Statement. We held two public meetings at the Thistle Inn, circulated many questionnaires, talked to a wide range of residents across the community, shared information on two facebook groups and engaged with visitors. In all, 405 separate comments were received at the first consultation through the Place Standard Tool, questionnaires and post-it notes. The second consultation was aimed at clarifying the outcomes of the first round of consultation. There were paper questionnaires at the event, with copies available at the Thistle Inn and the shop, plus links to the Google form were circulated by WhatsApp and the two village Facebook pages.

The Crossmichael and District Community Council would like to thank the residents, friends and visitors who contributed to our many consultations. Particular thanks go to *The Thistle Inn* for hosting our consultation events and our village shop for handing out questionnaires.



Contents

Introduction from Crossmichael & District Community Council...	4-5
Key Community Priorities...	6
Action Plan...	7
Where we are...	8-13
Who we are...	14-19
Key Assets and Key Concerns...	20-21
What we do...	22-25
Our Wish List...	26-27

The full responses to both consultations can be found at links on the Glenkens Hub, together with further information on work done on a solution to the sale of Crossmichael Kirk, the Quiet Village survey, Lochhill Agroecological Farm.

Thanks to Caroline Reeves of Crossmichael Community Council for leading on this work and to the UK Shared Prosperity Fund, Dumfries & Galloway Council and SWestrans for their funding. Thanks also for the GCAT support through the Glenkens Hub and Becca Nelson, and Ruaridh Hex for his drone shots. All photographs have been supplied by residents, with their permission to be used here.



Funded by
UK Government



Introduction

“It’s all about the people, the place, the plan and perseverance”

For the best part of four decades, people in and around Crossmichael have campaigned for the completion of the path between Crossmichael and Greenlaw. For more than five years, people have asked for the road along the main street to be resurfaced. For more than three years, we have campaigned for the introduction of a *Quiet Village Charter* to reduce the speed of heavy vehicles which thunder through the village, keeping people awake and endangering pedestrians.

By the end of August 2025, the main street in Crossmichael will have been partially resurfaced. By 2026, we hope plans and funding will be firmly in place to complete the path to Greenlaw. We hope by 2027, our *Quiet Village Charter* will have been adopted by other rural communities who have similar problems and that we get national support for this initiative.

We are a vibrant community and lucky to have some of the key components for a great rural place to live – a school, a shop, a pub, a functioning and motivated community council and community trust, a youth group, a heritage centre, small businesses, a hairdresser, volunteers who run swimming groups, organise sporting competitions, maintain the





Community Woodland, mow the grass, run the village Flower Shows and Gala. We have a Resilience Group looking to support the needs of people who face flooding and other risks.

We don't know what the next 10 years will bring for this community but we have tried to envisage what would 'make a difference' and to listen very carefully to the needs and wants of 'our folk,' including Townhead of Greenlaw, Square Point and Clarebrand.

We would like to think in the short term we can meet the really important needs: to save the community hall, to ensure the *Quiet Village Charter* is supported, to improve active travel, to find a place and funding for a toddlers and a special needs playground, to maintain and improve our green spaces and access to the River Dee, and to save the Kirk for generations to come.

In the longer term, we will need to plan for a community hub with easy access to resources plus identify ongoing and new funding sources for projects that enhance the quality of life.

We want to thank all the people who have supported Crossmichael and district; too many to name and we hope this place plan is both listened to and supported.

Crossmichael and District Council. August 2025

Key Community Priorities

Traffic and Connectivity

- Improve road maintenance to reduce potholes and enhance safety
- Complete the footpath between Crossmichael and Greenlaw for safer walking, cycling and improved mobility access for all ages
- Implement smart footpaths and traffic calming measures, including vehicle-activated signs and a 20mph limit in the village
- Enhance road crossing points for pedestrians, particularly for access to the school
- Add lines at the dropped kerb outside the shop to stop long term parking
- Ensure the *Quiet Village Charter* is supported by hauliers, forest lorries and farmers

Footpaths and Walks

- Create a network of signed footpaths connecting heritage sites across the whole parish
- Improve pedestrian footpaths in the village for safer and more enjoyable walking
- Develop access to woodland areas for recreation and enjoyment

Children's Playground

- Re-establish a children's playground to meet the needs of all ages and abilities
- Ensure inclusive play equipment and accessible surfaces

Marina and the River Dee

- Improve access to the Marina and promote its use for locals and visitors
- Install bench seats at viewing points, install changing spaces for wild swimmers

Heritage

- Develop information boards and QR codes showing the village's history and the natural heritage across the parish
- Work with others to preserve our historic church

Local Businesses and Community Facilities

- Support the village Pub and Shop to ensure they remain vibrant community hubs
- Ensure the community Crossmichael Memorial Hall can open again
- Installation of public toilets to improve visitor facilities
- Resolve flooding in Templand and surrounding areas before any additional housing is permitted in the Local Development Plan

Community Hub

- Establish a community hub for the Youth Club, to host pop up events, with shared desk space, reinstate the badminton/pickle ball court, hire for children's parties etc
- Provide access to Citizens Advice Bureau and other community support services

Strategic Priorities

- The strategic priorities of the Crossmichael community centre around the necessary infrastructure for rural living as expressed in the Glenkens and District Community Action Plan
- We are committed to working together as a parish community and as part of the wider Glenkens to make these priorities a reality, but we will need the support of regional and national agencies to realise the longer-term priorities

Action Plan

Over fifty percent of participants in our questionnaires felt these are key tasks...

Traffic and connectivity

- Increased road maintenance throughout the parish
- Resurfacing of Crossmichael Main Street
- Footpath from Crossmichael to Greenlaw
- 20-mph limit and *Quiet Village Charter*
- Improved pavements
- Safe road crossing point(s) created
- Lines in front of village shop to limit parking time

Potential Partner

D&G Council
D&G Council
SWestrans - ongoing
Active Travel/SWestrans
D&G Council
D&G Council
D&G Council

Crossmichael Memorial Hall:

In favour of retaining a hall on this site – 95%
In favour of retaining the existing building – 60%
In favour of creating a new building on this site – 31%

Questions posed
on questionnaire
and at drop-ins

Facilities

- Improved signage and access to River Dee and Marina
- Installation of public toilets
- Better foot & cycle paths across Crossmichael & District parish
- Signposted and connected walking routes, cycle storage
- Hub for the Youth Club, space to include shared desk space, badminton/pickle ball court, visiting support services

D&G Council
D&G Council
Active Travel- ongoing
Active Travel- ongoing
D&G Council & funders

Recreation

- Young children's Playground with disability access
- Improved access and recreational facilities in woodland areas
- Large map of surrounding area with points of interest
- Signposted footpaths connecting heritage sites and local walks
- Illustrated map of the village with information and history

D&G Council & funders
D&G Council & funders
Crossmichael
Community Council
& funders]

The Kirk:

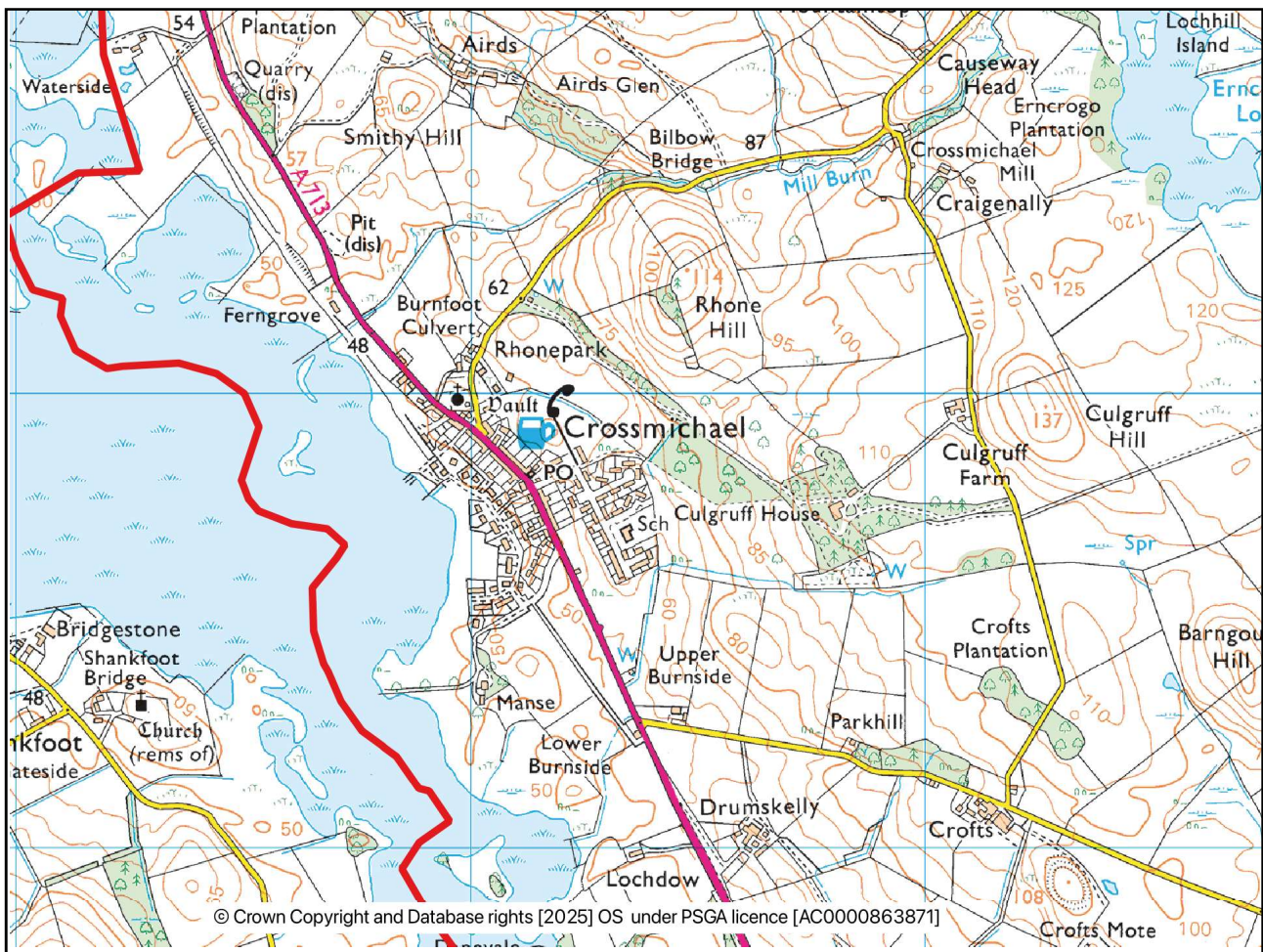
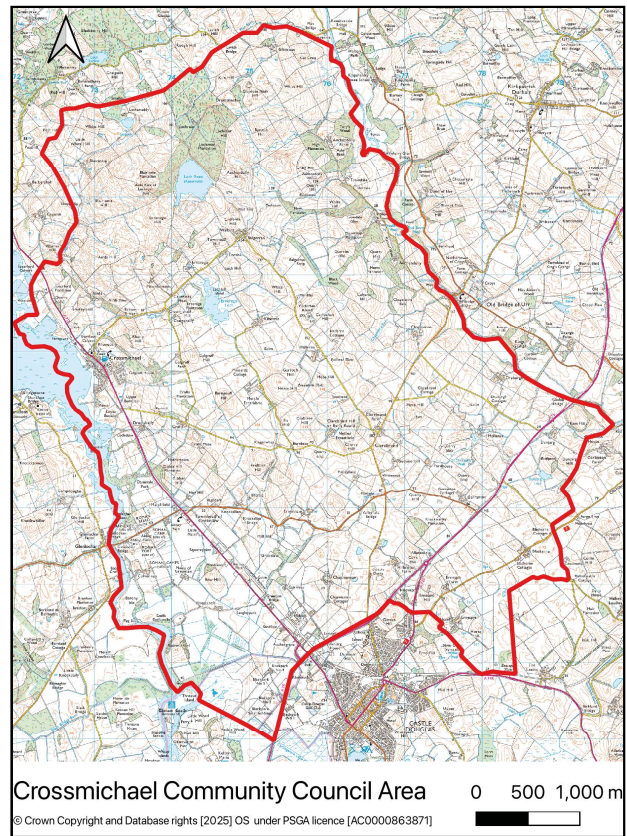
Save as an A category listed building and focal point of the community, and establish a charity to buy and maintain the Kirk

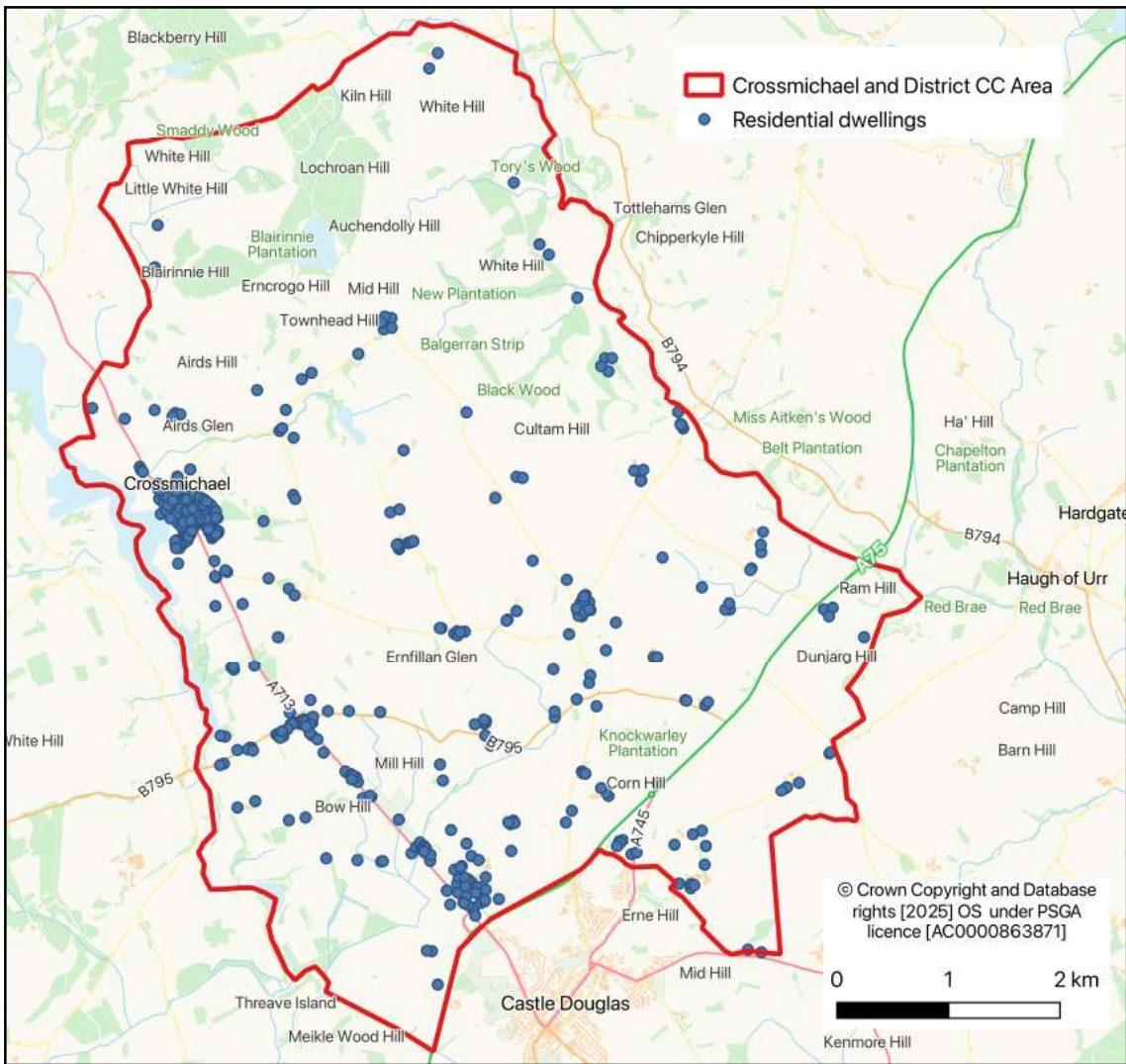
Crossmichael CC

moorland and agricultural land, covering part of Crossmichael's CC area, including the village. The CC area is also fully within the Galloway and South Ayrshire UNESCO Biosphere Partnership's Transition Zone. The Glenkens Land Use Vision gives voice to a shared aspiration of the Glenkens communities to move to a position where land use activities enhance local climate and environmental resilience, biodiversity and thriving communities, and support re-population.

This LPP builds on an existing body of research and community engagement collected since the end of lockdown and echoes the drive to support a healthy, happy and engaging community. It also echoes the themes of the Glenkens and District

Community Action Plan with the priorities of Connection, Asset Rich, Economically Flourishing and Carbon Neutral being seen throughout our residents' responses.





Our parish sits along side the River Dee, with most people living in Crossmichael village and along the A713 leading from Castle Douglas north west into the Glenkens. Crossmichael has a rich history, with evidence of human presence dating back to the Stone, Bronze, and Iron Ages. The Mote at the Crofts is a striking mound visible from the A713 roadside, approaching the village from Castle Douglas. It consists of stepped stages with a broad grassy summit about 280 feet across. There are 5 other Motes within the boundary of the parish.

The Romans had a significant presence in the area, particularly at Glenlochar Roman Fort. This fort was built around 81 AD by Governor Gnaeus Julius Agricola and enclosed an area of approximately 7 acres, and temporary camps, showing the area's strategic importance during the Roman occupation. The Glenlochar Roman Fort is an essential part of Scotland's Roman history.



Model of Glenlochar Roman Camp

While there's no evidence of actual Viking settlements in Crossmichael, the Vikings did raid and settle in various parts of Scotland during the Viking Age (793-1066 AD). The lack of specific information about Viking influence in Crossmichael might be due to the limited

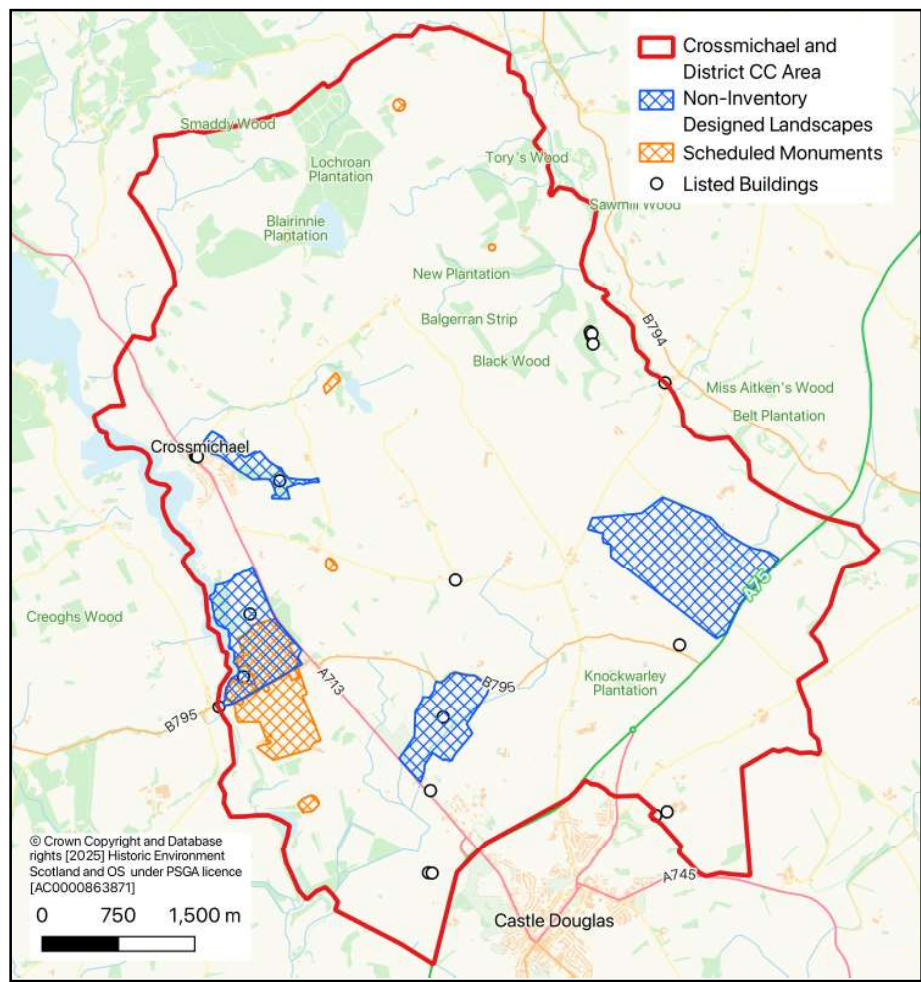
archaeological evidence or records from that period. The famous *Galloway Hoard* was found on a site overlooked by Crossmichael and is the richest collection of rare and unique Viking age objects ever found in Britain or Ireland.

The village has connections to notable historical figures, such as Sir Walter Scott's heroes *Old Mortality* and *Jeannie Deans*. The man who was the inspiration for J.M. Barrie's *Captain Hook* is buried in the local graveyard, as is England's

first black cricketer, the descendant of a plantation owner. Also buried here is the poet William Neill. He wrote in Scottish Gaelic, Irish Gaelic, Scots and English and was a major voice in the Scottish Renaissance for his works in Scots and Gaelic.

The Crossmichael Heritage Centre is a valuable resource for learning more about the area's history. The centre features exhibits on the village's history, including its Roman and Iron Age past. Visitors can explore displays, attend events, and learn about the local community's heritage.

Some of the large estates in the parish were broken up and divided into small estates after both World Wars, sometimes because of the death of the owners, often through lack of building materials to repair estate houses, or men to do the work. Many were sold to sitting tenants which spread land ownership more widely. This reshaped Crossmichael into a parish of small and medium family farms, many former tenant farmers became owner-occupiers. Now the need to remain viable has seen smaller farms being absorbed into neighbouring farms. As part of Dumfries and Galloway, we make an important contribution to the food production of Scotland.



The Hearse House

In the 1930's the Galloway Hydro Scheme became the first 'all river' hydro scheme in the world, built to capture the power of the Ken/Dee river system. Originally five power stations along with eight dams, a large barrage gate and a series of pipelines, aqueducts and tunnels to control the flow of water, employed over 1,500 people. Much like the response to wind farms today, not everyone was keen on the hydro scheme. Objections came from fishermen (fish ladders are built into the scheme), changes to the landscape and waterline. Some were fearful of the coming of electricity into their homes. There are stories of women wearing hats in their houses to protect their eyes! The scheme is said to have been very influential in the development of hydropower in Scotland. All the power stations and dams built in the scheme are now listed buildings.

The impact of Climate Change

Through the Climate Ready Ken project—which includes Crossmichael—several climate-related challenges that directly affect local farming were identified:

- More frequent flooding, causing damage to livestock, crops, farm access, and infrastructure like farm buildings.
- Unpredictable weather patterns, including heavy rainfall and variable river flows.
- Hotter, drier spells, leading to water shortages for livestock and drought followed by intense floods.

Localised flooding has been an issue across the parish.

Crossmichael village was impacted by flooding coming through the Templand estate, through the pub and onto Main Street. This needs addressing, and led to the creation of a newly invigorated Resilience Group to avert future issues.

Farmers here are already dealing with shifting climatic conditions — managing livestock facilities in flood conditions and facing risks both from drought and deluge.



Crossmichael floods 2024



Land Use, Forestry and Rural Infrastructure

Much of the land in the parish is upland pasture and moorland, with native cattle and sheep grazing the permanent pastures. Environmental schemes ensure that habitats are enhanced and protected to encourage wildlife. Many small woodlands of mixed native hardwoods have been planted, and this blend of patchwork woodland and extensive grazing ensures that the beef and lamb produced has a low carbon footprint. Crossmichael is fortunate to have been largely spared the blanket conifer plantations which can affect biodiversity and habitat diversity.

Agricultural activity remains an important part of the local economy. Slurry and manure management across all types of livestock farms are highly regulated because runoff and

nutrient loading can pose water quality risks if not managed to good practice standards.

Heavy goods vehicles associated with both forestry timber extraction and farming activities are widely recognised to place pressure on rural road infrastructure, raising concerns about road maintenance and safety.

Regenerative Farming: Lochhill Agroecological Initiative

A promising local development is underway near Crossmichael: a newly established community interest company, Lochhill Agroecological Farm CIC, is a small community farm enterprise working with the landowners at Lochhill. The aims are:

- To maximise ecological diversity within an agroecological system
- To be a place for sustainable and resilient livelihoods across a range of farming and other rural enterprises
- To share knowledge and learning through events and workshops

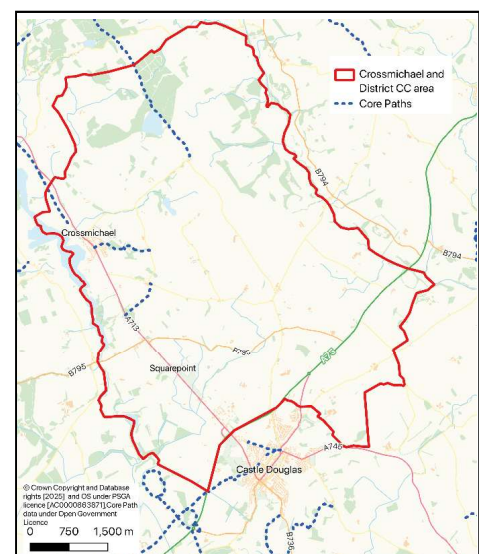
Farming projects under development include a market garden and a micro-dairy, using a herd of Shetland cattle, managed on a pasture-fed cow-with-calf system.



Luna, with her new calf

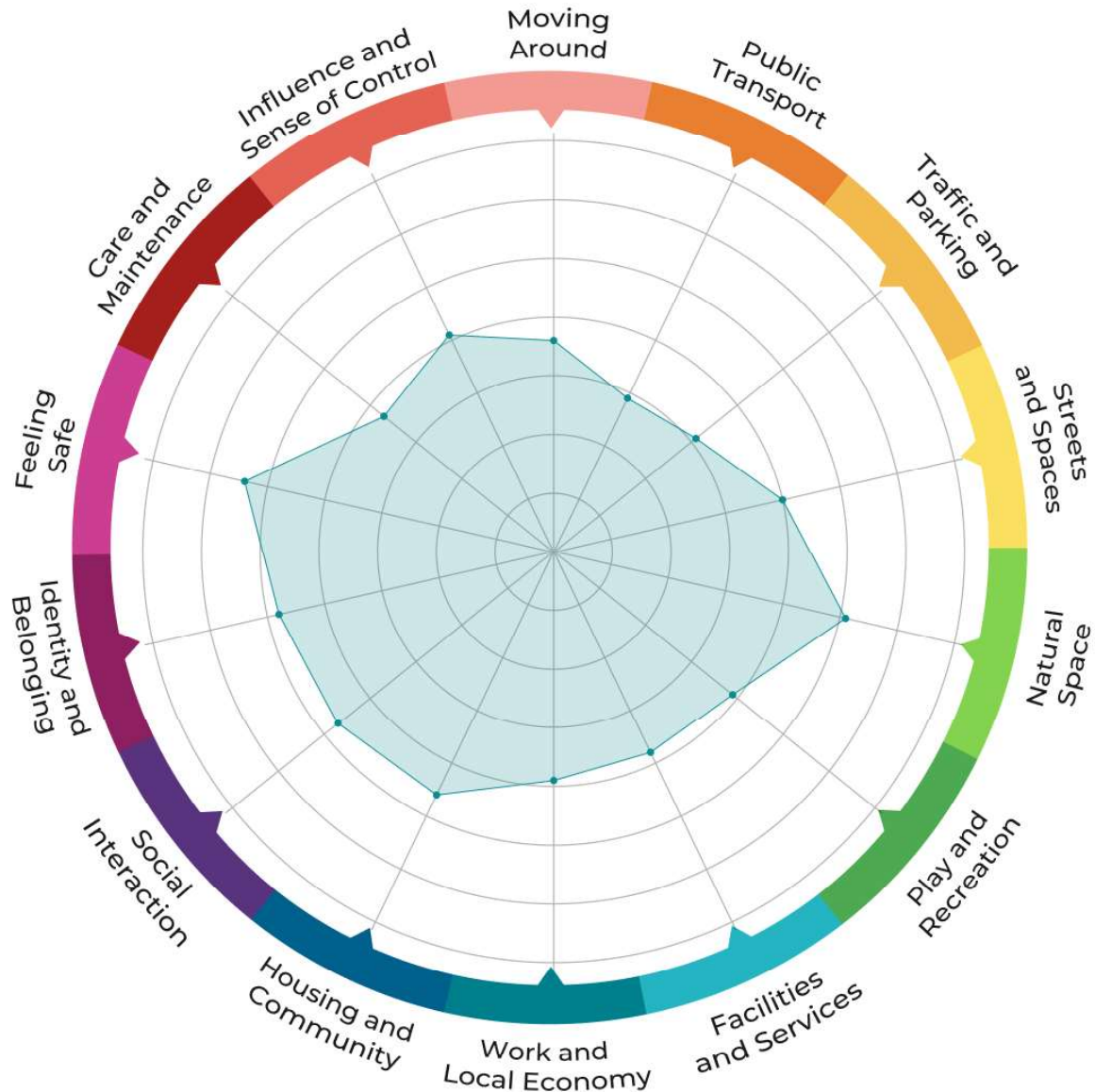
There is concern over the impact of wind farms on our surrounding area, particularly the degradation of the Dark Skies designation from the lights on very tall turbines and the impact on the Galloway Forest. There is concern about the visual impact of windfarms as well as the detrimental impact to wildlife habitats, and a feeling that this area is taking more windfarm development than any other part of Scotland. This is balanced with the potential of funding for community projects through Community Benefit from the wind farm companies, and the need for green energy.

While we may not have as many core paths as other areas in the Glenkens, we have magnificent walks and direct access to the waterfront of the River Dee. Our Resilience Team works closely with the Loch Ken Trust on all safety matters, and the work of the LKT Rangers. We also work with Drax, who own the waters and watersides, to ensure good health and safety measures for residents



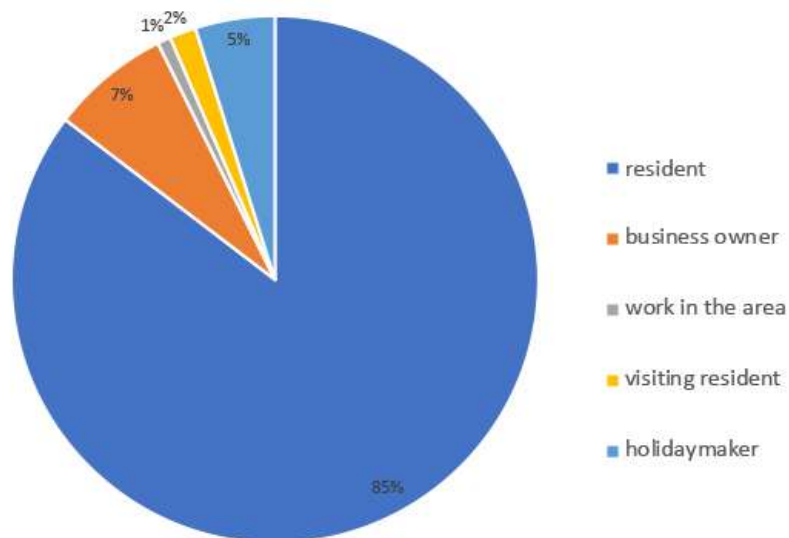
Follow this link on <https://glenkens.scot/local-place-plans/crossmichael-local-place-plan> to the Crossmichael LPP page for more details, plus further information about the Quiet Village Charter and the Crossmichael website

Who we are and what we think...

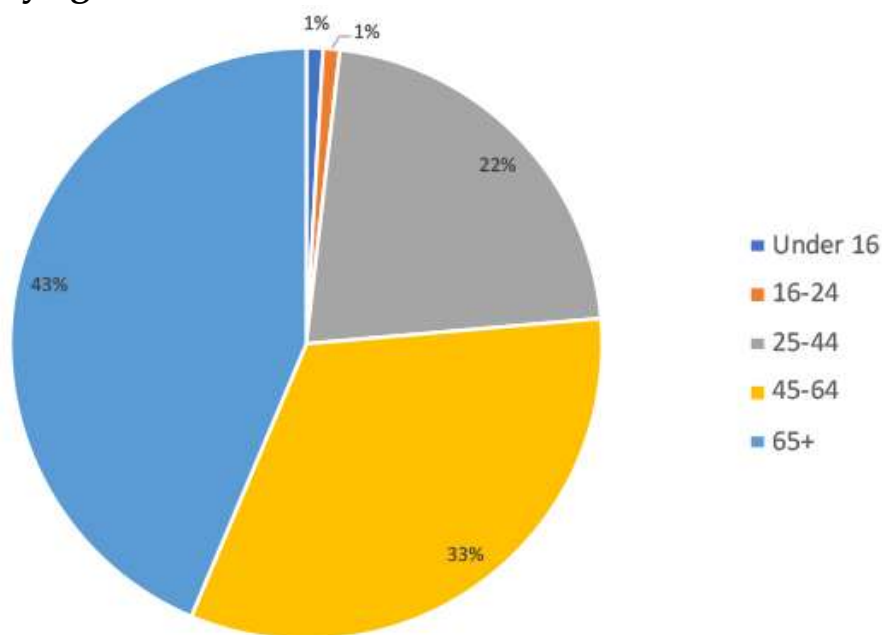


Crossmichael residents were invited to rate different aspects of living here on a scale of 1-7, with 7 being the highest score, and the results were averaged on the spider diagram, giving a snapshot of which areas would benefit most from improvement.

Relationship with Crossmichael...



Respondents by age...



Age Profile

In line with many rural communities, the Crossmichael and District CC area has a higher number of over 65s, with 29% of the population falling into that age group, compared with around 20% nationally. Across the CC area, under 16s form just 13% of the population – below the national average of 15.3%. However, this pattern is not consistent across the entire CC area, with under 16s making up around 16% of the population in the village itself. This supports local perceptions that young families are choosing to make their homes in the area, supported by a thriving primary school, a nursery close by and a choice of secondary schools within easy reach in Castle Douglas and Kirkcudbright.

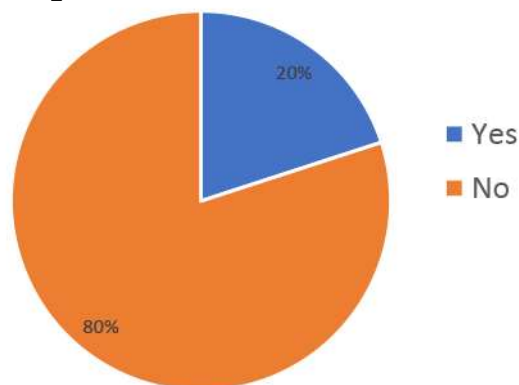
Economy and employment

Skilled Trades and Professional roles jointly formed the largest employment sectors in the CCC area at the time of the 2022 Census, with around 45% of skilled tradespeople (around 10% of all employees) working in agriculture. Transport and Machine Operatives made up 11%, with Sales and Customer Service, Administration, Management and Caring roles each making up 8-9% of the total. 45% of Crossmichael residents in employment or full time study travel to their workplace or place of study by car or van; 34% work from home, and 21% travel by other means.

Moving Around

The majority of responses highlighted the importance of improving pedestrian and cycle access to Townhead of Greenlaw and Castle Douglas. Problems with wheelchair and buggy access were raised.

Respondents with disabilities...



Public Transport

Answers focused on the fact that service hours are limited to weekdays and exclude evenings and weekends. Lack of coordination with forward services was highlighted.

Traffic and Parking

Suggestions for improving traffic and parking included the introduction of a 20mph limit and traffic calming measures. Issues with inconsiderate parking and a lack of capacity for parked cars when events are taking place were highlighted.

Streets and Spaces

Respondents again highlighted the importance of a footpath to Castle Douglas as well as calling for further maintenance of road surfaces, especially St Michael's Road.

Natural Space

Natural space received the second highest score, with respondents commenting on the number of spaces where nature can be enjoyed. Improvements to all pathway surfacing and access to both the Marina and River Dee were called for.

Play and Recreation

Respondents highlighted their upset at the removal of play equipment at the Templand playpark without consultation with the community. The ongoing closure of Crossmichael Memorial Hall is bad for community life. Better waterside facilities at the Marina as well as more play areas were particularly mentioned.



Something for everyone!





Etive Mhor

Hall
PW

Hall

Crossmichael

Sch

War Meml

The Old Manse

Crown Copyright 2025 OS [AC0000863871] You are permitted to use this data solely to enable you to respond to, or interact with, the organisation that provided you with the data. You are not permitted to copy, sub-license, distribute or sell any of this data to third parties in any form. Not to scale.

Community Assets

1. Kirk
2. The Hearse House
3. Church Hall
4. Thistle Inn
5. Village shop
6. Memorial Hall (closed)
7. Wee Book Hoose
8. Community Woodland
9. Primary School
10. War Memorial
11. River Dee and the Marina

Work and Local Economy

Respondents commented on the need for more career opportunities for young people, and the need for training to support economic development. People commented on the potential for a community hub being created which could be used for pop up work space, skills training, health outreach etc.

Housing and Community

Respondents were split between those calling for more affordable homes and those stating that there was already sufficient housing in Crossmichael.

Social Interaction

A number of comments mentioned the importance of the pub as a social hub, and respondents reflected a sense of urgency to get the Crossmichael Memorial Hall back up and running to support community groups and help to combat social isolation.

Identity and Belonging

Most comments referred to the strong sense of community and availability of social activities. Some respondents perceived divide between residents from different areas of Crossmichael.

Feeling Safe

Almost all comments highlighted that respondents felt very safe in Crossmichael. The comments on improvement in safety related to reducing the threat of flooding, gritting pavements in icy weather, and street lighting.



Care and Maintenance

Potholes and uneven pavements were the focus of the vast majority of comments. Concern relating to slurry lagoons was mentioned but their use is governed by robust national planning legislation to ensure potential impacts are managed.

Influence and Sense of Control

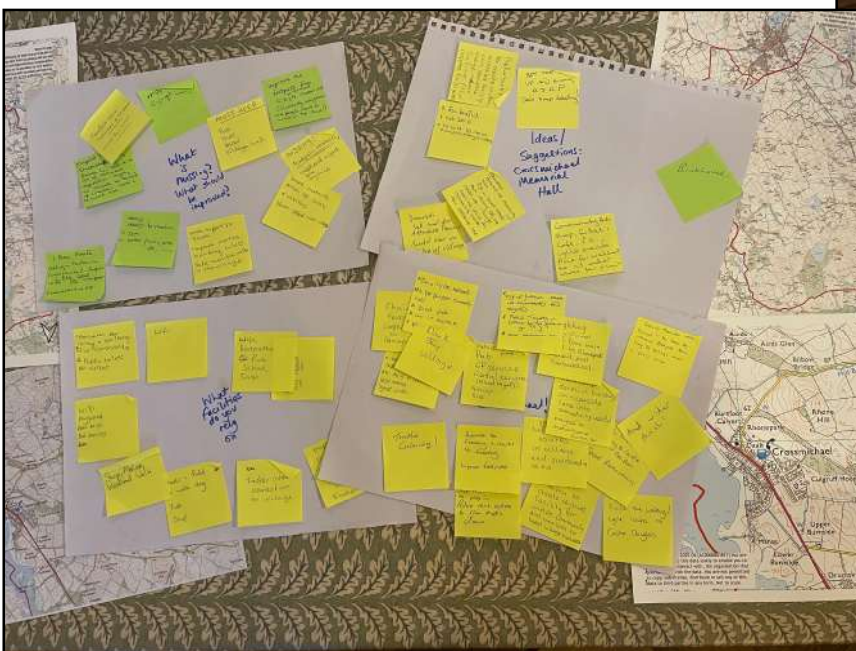
A perceived lack of influence in planning and decision making was evident in responses to this section, particularly relating to land use.

The Marina and waterside feature highly in residents' special places

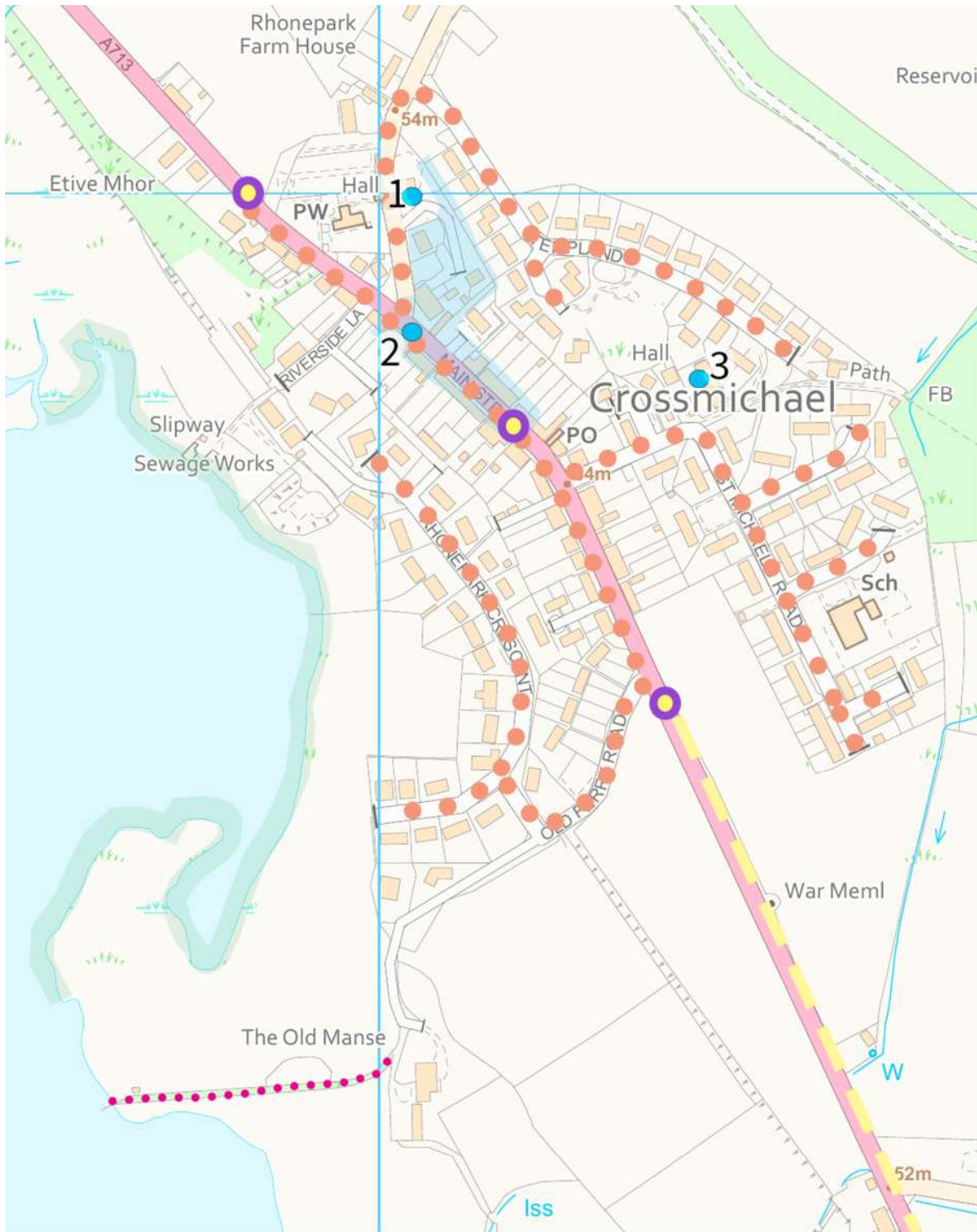
Our two public consultations were held at the *Thistle Inn*, from 2.30-8.30pm on Thursdays, to allow access for all ages. We provided questionnaires to complete through a QR code, plus paper copies at the Thistle Inn, the Church Hall and in the village shop, with boxes for posting responses. Community engagement was high, with discussions often held in the Thistle Inn outside of the formal consultation times. The draft document has been widely circulated for comment, plus a meeting held at Crossmichael Primary School to ensure people of all ages have been involved. We have engaged with Drax over the management of the riverside and the Marina, as well as working closely with Dumfries & Galloway Council over a number of issues that have been raised through the consultation process. We continue to work with hauliers, forestry transport companies and local businesses to gain support for our *Quiet Village Charter*, plus engaging with the Timber Transport Forum, SWestrans and other Community Councils within the Stewartry and the Glenkens who are affected by heavy traffic disturbance.



Setting up consultation papers, maps, forms, QR codes, pen and paper, drinks and snacks all ready!



Our Proposals...



© Crown Copyright and Database rights [2025] OS under PSGA licence [AC0000863871]

- Vehicle-activated signs
- 1. Public toilets next to the Church Hall
- 2. Pedestrian Crossing
- 3. Storage Container for the resilience/ active travel group and the youth group
- ▬ Footpath to Townhead of Greenlaw
- 20mph speed limit
- ⋯ Overgrown footpath to the Old Ferry mooring
- ▬ Rubbish, fishing tackle, soiled paper along the waterline
- ▬ Flood area, excess rainwater from higher land, blocked drains/soakaways

What we do...



The Dee Dip happens on New Year's Day, regardless of the weather...

Swim Queens, Wednesday and Sunday mornings at the Marina, supported by a safety boat.

The Beltie Triathlon Festival, the Very Wee Beltie for novices, and the Wee Beltie, standard distance triathlon. Usually held in September.



Women's Walking and Boxing groups.





The very popular Youth Group, supported by community volunteers. They currently have no regular big meeting place now the Memorial Hall has closed so the search is on for an answer. The spectacular annual firework display happens down by the waterside, supported with funding from Crossmichael CC, all safely managed by volunteers.



The Crossmichael Flower Show started in 1979 and soon became a highly competitive event. This year, 2025, it joined the Gala Day celebrations.



With funding from Foundation Scotland we have been able to restore the railings around the war memorial.



The fountain was removed to allow for development and was left by the side of the road. Recently money was raised in the village by the Community Council to rebuild the fountain in a form better suited to present times.



We are very close to the Galloway Forest Park which was designated a Dark Sky Park in 2009. This means we can easily see the Milky Way, shooting stars and meteor showers, plus more recently the Northern Lights have been very visible.



Danevale Park first opened for Snowdrop Open Day in 1951, and has been open every year since. The snowdrop display amongst the woodland is magnificent, as is the Walled Garden which is currently undergoing restoration. Snowdrop plants are sold to raise money for the Memorial Hall funds.



When our village phone box was decommissioned, we made it into The Wee Book Hoose. Anyone of any age can bring and take books — all free of charge.



Our Community Woodland

Running between St Michael's Road and Culgruff House, this woodland includes a 800m stretch of Core Path 153, linking the village to the woodland beyond. Planted in the mid-1990s by Archie McBride, the current landowners, James and Christine Shedden of Balgerran continue the gift. Used by walkers, the Youth Group and school children, the paths and native broadleaves (with some conifers) are maintained by the community. Funding from the Galloway Glens Landscape Partnership Scheme and the Blackcraig Wind Farm Community Fund, allowed the installation of a new footbridge, benches and picnic tables plus enhanced drainage and path resurfacing. Funding is needed to maintain all of this to ensure it is all safe to use.

The site received a "Tree of Trees" from The Queen's Green Canopy, commemorating the Platinum Jubilee and celebrating the dedication of local volunteers.



The fancy dress parade arrives at the field, the Vikings get armed, welly boots were thrown — and then the Red Barrows storm on!



Crossmichael Gala and Flower Show 2025

A community day to remember for everyone who braved the weather! After weeks of planning, hours of careful gardening, making of costumes, erecting marquees and endless trips down to the newly mown riverside field, the day arrived with the prospect of torrential rain. Luckily the rain held off for the parade from the school down to the field and the entertainment began. Flower Show and Dog Show winners collected their rosettes, races were run, the Vikings battled and then came the Red Barrows — and what a show it was! Despite the heavy rain and aided by the bar and refreshments they performed their well practised routine, 'nurse' dealt with the casualty and the crowd cheered!



Our wish list...

We know from our consultations that support for the footpath to Greenlaw, to connect directly to Castle Douglas, is a very high priority. Residents are pleased with the progress made with the Active Travel group, and know that a good, well maintained footpath will help people of all ages and with all levels of ability. The Rugby Club and its facilities are an important asset for the village and direct pedestrian or cycle access would be a great advantage. We will continue to work closely with SWestrans and Active Travel to ensure this is kept on schedule.

The highways improvements to Main Street have made a big difference to life for those living so close to the road. The issue of heavy transport speeding through the village continues and we will push our Quiet Village Charter forward. Speeding still causes safety concerns, and we will continue to press for Vehicle Activated Signs (VAS), 20mph areas, and safe crossing points. EV charging points will be needed soon.

Crossmichael Memorial Hall has been a key part of the community since 1954. Used by all ages for a wide range of activities, its closure has meant groups have had to relocate or close down. A refurbished hall could create an even better hub for the surrounding community. There is a demand for rentable desk spaces with reliable wifi, rooms that can be booked for a number of community support groups, a proper home for the Youth Group, a base for an Active Travel cycle hub and a badminton and pickle ball court. The issue is funding and the Crossmichael Community Trust are currently searching for help with this.

We are lucky to have a thriving primary school in the village, and their play equipment will be updated thanks to recent funding. However there is a lack of play equipment for younger children or those who need additional support — again funding is needed. Access to the Community Woodland has to be constantly monitored by volunteers for safety issues. The Resilience Team is vigilant in their work to ensure any safety issues are dealt with swiftly and are currently seeking funding to support a new storage facility for all their safety equipment that is close to hand for the Resilience volunteers. There is a possibility to share some of this space with the Youth Group. Again, funding is a key.

The River Dee and Marina make important contributions to life here. There would be huge benefit from better foot and cycle paths, with signposted walking routes and secure storage for cycles — again funding is key. Public toilets are needed for visitors, people using the Marina have nowhere to use. There is nowhere to sit at the Marina or surrounding area and benches would be well used. People who swim regularly would also benefit from changing huts.

The Crossmichael and District Community Council is working to produce a large scale map of the village identifying facilities, businesses, heritage sites, walks and other points of interest, to display on the village noticeboard and to download from the Glenkens Hub.

It is known that the Kirk will soon be available to buy on the open market. There is a need to save this category A listed building which is such a key part of the Village, seen for miles around. The aim is to establish a charity to purchase the building. The graveyard is owned by Dumfries and Galloway council. The extensive graveyard is maintained by volunteers in the community.

**Crossmichael and District Community Council...
A CHARTER FOR A QUIET VILLAGE**

Many people in Crossmichael and the surrounding district cannot sleep through the night because of the noise of heavy traffic, often travelling at speed between the hours of 10.00 p.m. and 6.00 a.m.

The Community Council carried out a research project which identified and reported physical and mental health problems to do with the noise and sleep disturbance. We know that poor sleep means children concentrate less well during the day and adults are more prone to develop conditions such as heart problems.

WE NEED HELP FROM HAULIERS, FARMERS AND HEAVY GOODS VEHICLE DRIVERS TO:-

1. Avoid driving through the village between the hours of 10.00 pm and 6.00am, unless absolutely necessary.
2. Stick to a 20mph speed limit at all times.
3. Not drive in convoy.
4. At all times, drive with care for our residents, their property and parked vehicles.
5. Sign up to the public charter to agree the above and help our community.

THE CHARTER

We agree to the above, to support Crossmichael and District residents in order to have a better quality of sleep and life.

NAME:

COMPANY:

.....

DATE:

Thank you

