



# Kirkmahoe Local Place Plan

2025 to 2045

---

# Contents

---

| <b>Item</b>  | <b>Page Number</b> |
|--|--------------------|
| <b>Introduction</b>                                | 3                  |
| <b>Description and Context of the Area</b>         | 6                  |
| <b>Assets, Opportunities, Needs and Challenges</b> | 15                 |
| <b>Local Place Plan Area Map</b>                   | 17                 |
| <b>Community Engagement</b>                        | 19                 |
| <b>Vision</b>                                      | 28                 |
| <b>Proposal</b>                                    | 29                 |
| <b>Survey</b>                                      | 45                 |



## Introduction to Place Planning in Kirkmahoe

Place planning is a forward-thinking process that shapes the future of communities by aligning physical development, social aspirations, and cultural heritage. In the context of Kirkmahoe, it offers a unique opportunity to build on our rich local history, natural assets, and community spirit to create a sustainable and vibrant environment for all residents.

Kirkmahoe is more than just a location—it is a tapestry woven together by shared stories, traditions, and aspirations. With deep roots in its historical and cultural identity, our community has long demonstrated resilience and innovation. Place planning in Kirkmahoe requires understanding these unique qualities, balancing the preservation of heritage with the need to adapt to modern challenges. In doing so, we can lay a firm foundation for enhanced infrastructure, improved public spaces, and economic opportunities that reflect the genuine character of the area. This place plan was prepared and submitted by Kirkmahoe Community Council with support from local residents.

The process of place planning in Kirkmahoe focuses on engaging with a wide spectrum of people—local agencies and SEPA, DGC Flood Risk Management team, Roads department, community groups, businesses, and residents—to ensure that every voice contributes to the vision for the future. This collaborative approach aims to integrate local priorities into a cohesive framework that addresses key issues such as housing, transportation, environmental sustainability, and social inclusion. By identifying strengths and opportunities while addressing current and future challenges, place planning serves as a roadmap for building a community that is both resilient and adaptable. It will also inform the key themes to be explored when preparing our Community Action Plan.





In essence, place planning in Kirkmahoe is about harnessing our collective creativity and ambition to develop solutions that meet today's needs without compromising the potential of tomorrow. It is being proactive rather than reactive—transforming challenges into opportunities. As we embark on this journey, the goal is to create a blueprint that not only guides physical development but also nurtures a sense of belonging and pride throughout the community.

This strategic approach recognises that every element of our landscape—from public spaces and transportation networks to local amenities and cultural landmarks—contributes to the quality of life experienced by our residents. The purpose is to ensure that Kirkmahoe continues to thrive, evolving as a modern community while honouring the legacy and character that have defined it for generations.

This introduction aims to set the stage for a comprehensive place planning initiative in Kirkmahoe, emphasising collaboration, sustainability, and a respect for the community's enduring heritage.

# About Kirkmahoe

Due to its favoured geography, Kirkmahoe has been inhabited from Palaeolithic times. In the hills in the north of the parish are the remains of Bronze Age settlements and lower down are the sites of many Iron Age hillforts. Roman camps have been identified at Carzield, Gallaberry and Dalswinton. The layout of Kirkton is typical of a medieval settlement, with houses around a central green and with long, narrow gardens stretching down to the burns. Most of the existing houses are more recent, but built on the plan of the older village. Probably some of the foundations incorporate older houses. Changes in farming methods in the 18<sup>th</sup> century allowed many substantial farmhouses to be built. Dalswinton village was built in the early 18<sup>th</sup> century to house weavers and estate workers and remains very much unaltered.

Records show that until the 20<sup>th</sup> century, Kirkmahoe had a great variety of skilled artisans and craftspeople providing residents with goods and services, from stockings and hats to road mending and legal advice to the community.

Despite the centre being only 5 miles from Dumfries, Kirkmahoe is a rural parish. There are two main settlements, Kirkton and Dalswinton and smaller ones at Duncow and Auchencairn. At the last census (2022), Kirkmahoe's population was 634, of whom almost 65% were over 64 years old, and only 11% under 16.

There is a primary school at Duncow which is well regarded, attracting pupils from outside the parish. Most of the secondary aged pupils travel to the catchment secondary school, Wallace Hall Academy in Thornhill. For out of school social and sporting activities, young people have to travel outside Kirkmahoe. There is a high quality children's playpark at Longloch Drive, which attracts visitors from beyond Kirkmahoe, and a George V playing field at Duncow which is used as a sports field by the school. There are however no changing facilities.

There is no healthcare facility in Kirkmahoe but most residents access GP surgeries at Lochthorn and in Dumfries. The new DGRI is only a 15 minute drive from most parts of Kirkmahoe.

Housing is a mixture of older cottages and farmhouses, mainly built during the 18<sup>th</sup> and 19<sup>th</sup> centuries and more modern houses, particularly in Kirkton village. There are a few empty properties in good condition and two or three used as Air B&Bs. Properties are both owner occupied and rented. There are also some ruined buildings some of which are owned by Wheatley Homes, which are a draw for young people and a safety risk.

The close proximity to Dumfries provides opportunities for residents, but has also led to a gradual decline in services and local businesses. The parish now has no general store but there is a recently opened coffee and flower shop Blumen, in Dalswinton. In addition there is a post office service in Kirkton Hall every Tuesday and Thursday morning. For shopping, most people use 'Click and collect', order online or drive or use the bus for the 10 minute journey to Dumfries which requires reliable WiFi and safe roads. People without access to the internet or a car require a regular bus service, including an evening bus.

The C11n which is a spinal route through the parish is a busy, winding and narrow road which makes it challenging for walking and cycling. The bus service through Kirkmahoe only uses this route and many people live a significant distance from the nearest access point there are no connecting pavements or active travel routes. These elements can act as a barrier to parish social events.

There are village halls in Kirkton and Dalswinton which are well used. St Quentin's church in Kirkton is owned by the Church of Scotland and faces an uncertain future. The Barony Church in Dalswinton is privately owned and managed by local volunteers, it is used for services at various times of year and as a wedding venue.

In general, the environment has been shaped by farming. This is mainly raising livestock; sheep and both dairy and beef cattle. Over recent years, some of the smaller farms have been amalgamated. Kirkmahoe is owned by traditional estates, family farms and private individuals. Hoddam Contracting Co Ltd operate a gravel quarry and own a substantial amount of land in Kirkmahoe. Discussion took place with the managers in 2024 and they indicated that the quarry workings are unlikely to extend beyond existing permitted areas during the next 20 years.

Kirkmahoe has a low crime rate which is a key factor in the sense of wellbeing felt by residents who enjoy living in this environment and generally feel safe here. There are several waymarked footpaths within the parish which are well used. Kirkmahoe is a very friendly place to live. There are many volunteers for events, but the fact that we are an aging population is a concern.



**Issues raised by  
community members  
during our  
consultation**

# Flooding Issues

The landscape of Kirkmahoe was created during the late 18th Century when extensive improvements were carried out as reported by the Minister in the First Statistical Account in about 1795. In the early 19th Century more roads and houses were built based on the protection of the agricultural embankments.

At some point the River Nith was straightened at the Tooks, on the opposite bank to Cowhill. A Loch which gives Longloch Drive, Lakeside and Lake View their names was drained and the Lake Burn straightened (or even possibly created). Other burns may have been diverted into the Lake Burn to provide extra power for the mill at Milnehead. In the early 19th Century more roads and houses were built based on the protection of the floodbanks.

Occasionally the agricultural embankments fail and there have been serious floods perhaps every 30- 50 years. Recently the number of flooding incidents has dramatically increased and because of climate change this is predicted to continue and could get worse.

The current system whereby the floodbanks are described as agricultural and are the responsibility of landowners along the river is a concern to local residents. They are very expensive to maintain for their owners and this system does not recognise that they provide protection to roads and some houses.

It is also of great concern that SEPA make flood predictions as if there are no agricultural embankments. This is important because a river gradually rising along its whole length has a different impact to the experience in Kirkmahoe. Here, if the floodbanks fail there is a surge of water which moves very fast across fields to the Barras and Lake Burns, demolishing walls and moving loose items and potentially overwhelming anyone in its path. The speed of the water has been described as faster than a man can run.

At Carnsalloch where the agricultural embankments have been removed the C11n now floods regularly and public money has had to be spent to implement warning signs. In major floods the road is at most risk between Kirkton and Connansknowe. The resilience plan includes closing the road when the water level at the gauging station at Friars Carse goes over 3.2 metres.

Kirkmahoe is classed by SEPA as part of the Dumfries Nith Potentially Vulnerable Area 14/05 (Reference 1 below). Their action plan for our area does not include Community Flood Action Group or Property Level Flood action plan.

According to the Solway Flood risk Management Plan published by SEPA in 2021 (Reference 2 below), the area of Kirkton (target area 34) there are 40

homes and businesses currently at risk of flooding and this could rise to 70 homes by 2080.

There are concerns that this modelling does not include other vulnerable properties including some on the Dalswinton Estate. In the flood of December 2022, 19 properties were affected.

According to the National Flood Resilience Strategy (Reference 3 below) published in December 2024, 90% of respondents to a Scottish Government

consultation said that one option for a community to improve its flood resilience in the long term may be to slowly withdraw from the flooded area over time. There is an ongoing discussion about the houses in Barrasgate, some of which are owned by Wheatley Homes

and some privately. There is quite a strong feeling that no one should be expected to live in the properties on the north side of the road

and one householder has said that if they were properly compensated, they would happily sell.

The area could be used as a much-needed car park.

For an up-to-date assessment map of flood risk please visit [www.scottishepa.maps.aregis.com](http://www.scottishepa.maps.aregis.com)

#### References

1. [https://www2.sepa.org.uk/frmstrategies/pdf/pva/PVA\\_14\\_05\\_Full.pdf](https://www2.sepa.org.uk/frmstrategies/pdf/pva/PVA_14_05_Full.pdf)
2. <https://www.dumfriesandgalloway.gov.uk/sites/default/files/2024-12/Solway-Local-Flood-Risk-Management-Plan-Cycle-2.pdf>
3. <https://www.gov.scot/binaries/content/documents/govscot/publications/strategy-plan/2024/12/national-flood-resilience-strategy-3/documents/national-flood-resilience-strategy/govscot%3Adocument/national-flood-resilience-strategy.pdf>

# Roads

Kirkmahoe has one arterial road, the C11n, which goes from the A701 at Heathhall to the A76 at Auldgirth. Although it is a C road, and has very poor visibility in places, it is a main thoroughfare and is driven on by local people, buses, including school buses, heavy goods vehicles, which frequently ignore the 7.5 ton weight limit, and many agricultural machines.

Increasingly over recent years, there have been a number of accidents along this road, mainly between Heathhall and Duncow. Some are caused by careless driving, but Residents feel that others are the result of the carriageway being in a poor state of repair, with potholes and frequent puddles along its length. This has resulted in five reported injury accidents to the police in the three years to February 2025 and one fatal accident in July 2025.

Many residents who would like to be able to walk or cycle from Kirkton to the George V playing field at Duncow or other parts of the parish feel unable to do so because of the inherent danger of the road.

Several minor roads join with the C11n along its length. Many of these are in an even worse state of repair. This is compounded by the number of large (sometimes wider than the road) tractors and other farm machinery which cause a great deal of damage to the road surface. They also force pedestrians and cyclists to take evasive action by cowering in the hedgerows and gateways.





Added to the physical problems caused by lack of road maintenance is the increasing frequency of flooding events. Part of the road is a causeway, created in the late 1700s. Our infrastructure needs to be improved to make it fit for modern transport.

The narrow roads without passing places and poor visibility at junctions are a constraint on future housing development.

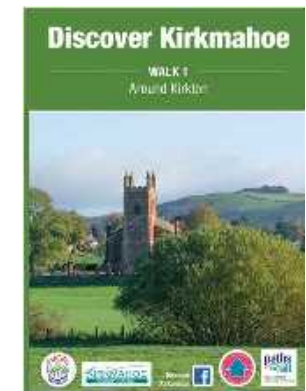
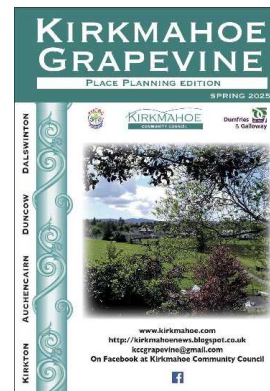


# Community Assets – Physical

- Duncow Primary School
- Kirkton Parish Church
- Dalswinton Barony Church
- Kirkmahoe Parish Hall (Kirkton Hall)
- Dalswinton Village Hall
- Kirkton Village Green
- King George V Playing Field
- Sam Leask Play Park/Kirkton Play Park
- Information Centre – Old Phone Box
- Notice Boards
- Discover Kirkmahoe walks

# Community Assets -Social

- Community Council
- Duncalves – Pre-school Group
- Soup and Pud
- Discover Kirkmahoe
- Grapevine
- Pilates & Yoga
- Community Events – Easter Party, Halloween Event, Santa’s Visit
- SWI (Rural)
- Writers Group
- Plus a variety of well attended clubs at both halls



# Our School

Duncow Primary School is a non-denominational primary school located in Kirkmahoe. Established in 1878, the school serves the local parish community. As of November 2024, the school had an enrolment of 37 pupils. The school enjoys an excellent reputation so this number is increasing.

The school operates in partnership with Holywood Primary School, sharing resources and collaborating on various educational initiatives. The headteacher leads a dedicated team committed to fostering a nurturing and inclusive learning environment.

The feeder secondary for most families living in the Kirkmahoe Community Council area is Wallace Hall Academy in Thornhill, although through parental choice, some pupils attend other D&G secondary schools particularly in the Dumfries Burgh.



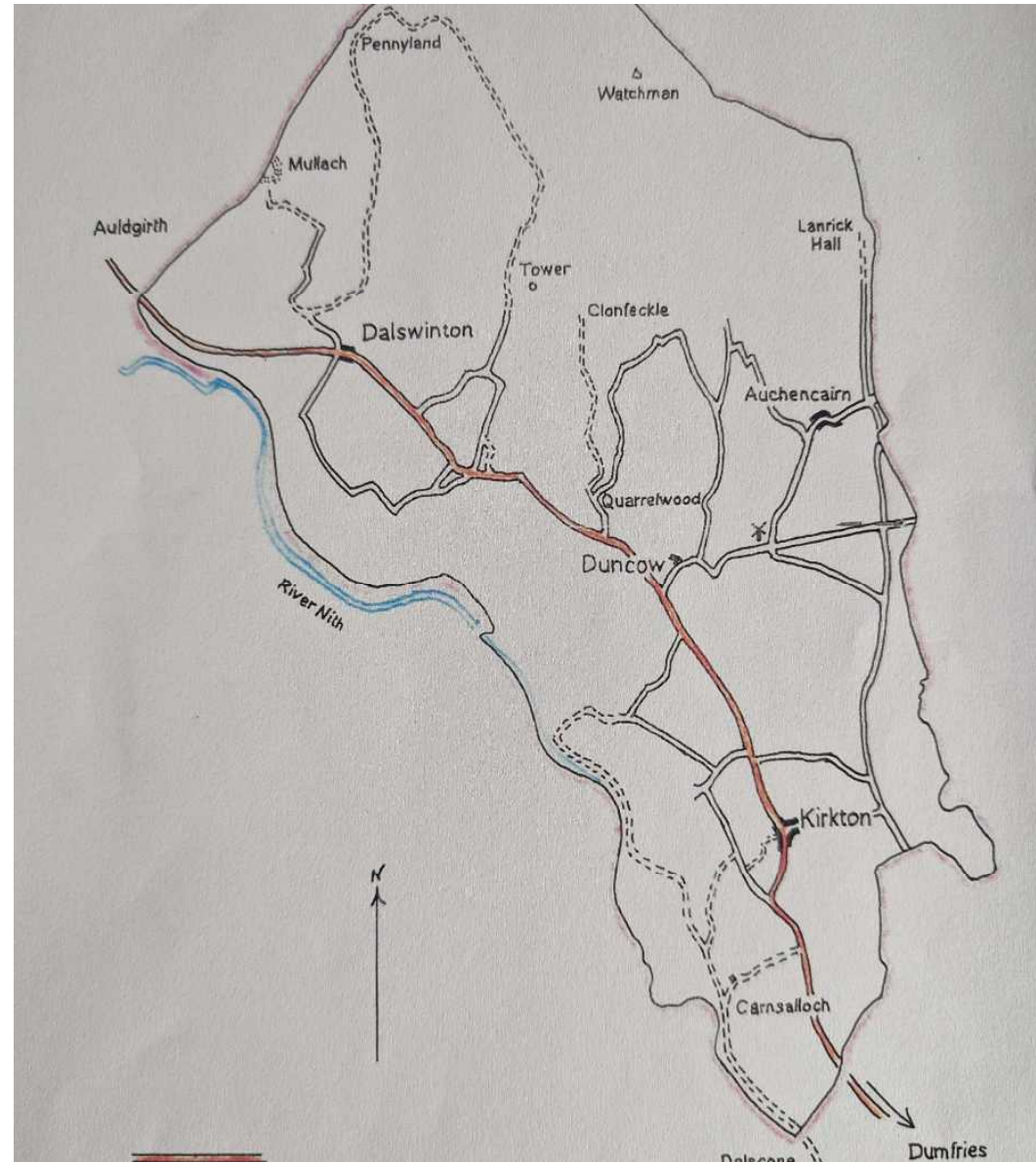


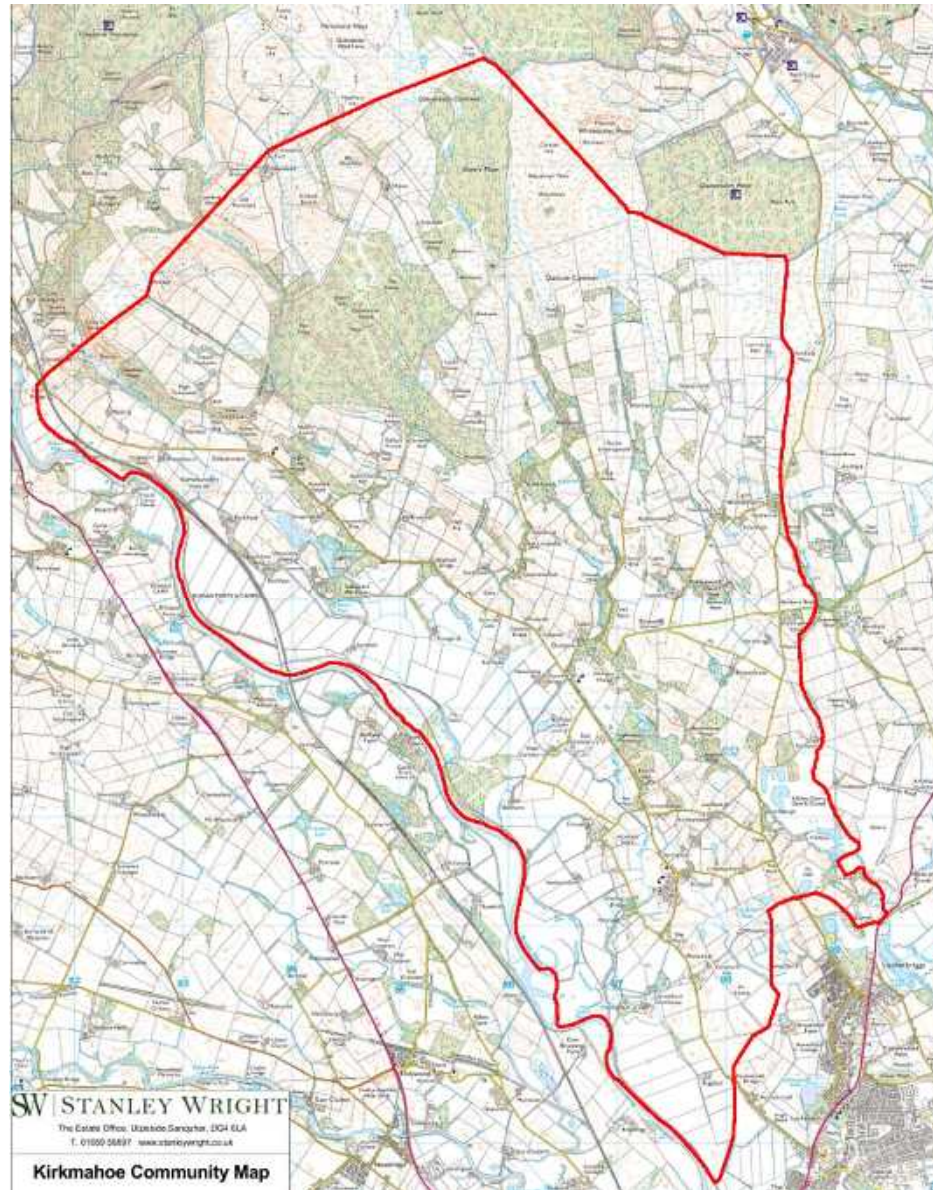
Duncow Primary School emphasises a curriculum designed to develop successful learners, confident individuals, effective contributors, and responsible citizens. The school has achieved Gold status in the UNICEF Rights Respecting Schools Award, reflecting its commitment to children's rights and active pupil participation.

In addition to its academic focus, the school encourages community involvement and practical learning experiences. Notably, after six years of persistent campaigning by pupils and staff, the school successfully advocated for improved road safety measures around the school premises, resulting in a reduced speed limit and enhanced signage to ensure the safety of its students.

## Map of Area showing main routes and settlements

This map represents the area which is covered by this Local Place Plan. Its boundary is based on that of Kirkmahoe Community Council.





This map represents the area which is covered by this Local Place Plan. Its boundary is based on that of Kirkmahoe Community Council.

This Map has been used with permission

# Community Engagement Survey

---



## KIRKMAHOE PLACE PLANNING SURVEY

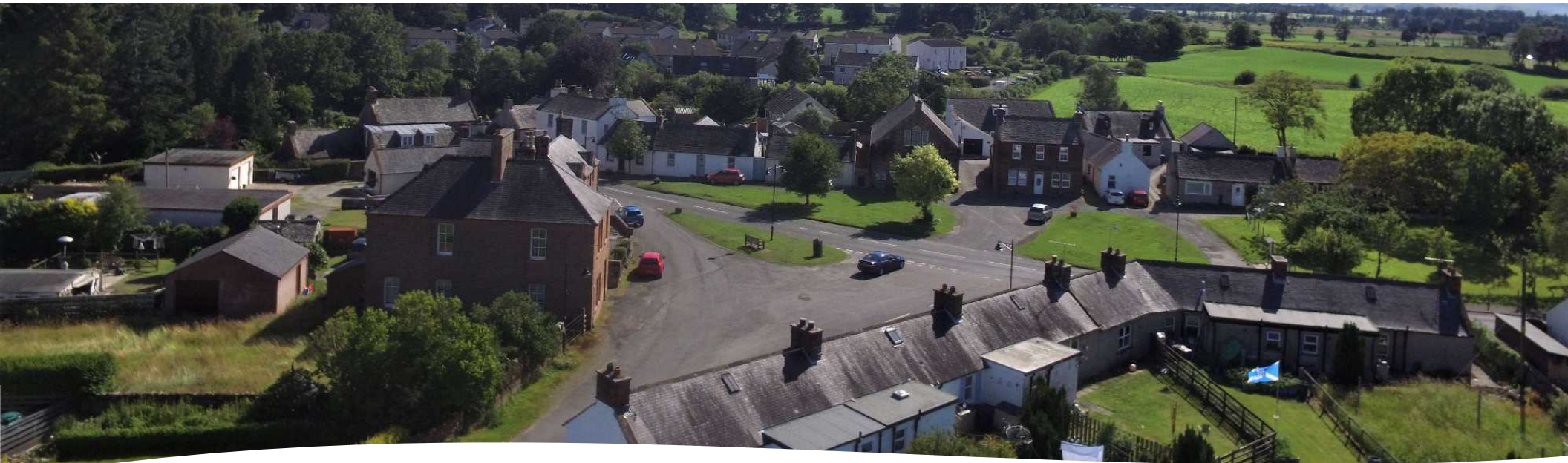
If you are able, please complete this form online by scanning the QR code or visiting the following link

<https://forms.office.com/e/tdUzsRn7tv>.

Otherwise complete this booklet and return to the red post box on Kirkton Village Hall which is above the defibrator, between the front door and the phone box or Blumen in Dalswinton.

**Please complete by the end of June.**





Each household within Kirkmahoe received a questionnaire and 56 responses were received, there was at least one response from each age category with the majority of the respondents being over the age of 45. The rurality of our area is reflected in the responses to the survey where the flourishing environment we live in was seen as a strength.

# What the survey told us

The majority of people who completed the survey felt Kirkmahoe is a good place to live.

Our greatest assets are the people who live here and active local groups.

The main area of concern is flooding risk, not only to established homes but as a disincentive to building new homes in the area.

A common desire is to plant trees and create more diverse habitats.

The poor condition of the roads was frequently mentioned, particularly overdue repairing of potholes, people driving too fast, poor visibility caused by overgrown verges and danger from wide tractors.

# Wait there's more

Many thought the creation of safe paths and cycleways to be vital to enable people to move around safely.

The bus service is thought to be poor, with no bus out of Dumfries after 17.40 which makes using the bus impossible for many who work in town. The service is therefore under-used.

Creating more parking areas in Kirkton and at Duncow school would be helpful.

Mobile phone reception is still poor in some parts of Kirkmahoe.

A few respondents requested a local shop in Kirkton.

More employment opportunities may encourage young people to stay in the area. However most respondents thought that developing more opportunities in farming would be the best option.

# Some suggestions from the Survey include:

Community Garden/orchard/allotments

The creation of a Local Development Company to create wealth for the community. (e.g having shares in windfarms) and investing in the Kirkmahoe community.

Building appropriate housing for older people and helping with energy efficiency.

# Community Engagement Public Events 2024

---

**IMPORTANT**

## PLACE PLANNING

Your chance to shape the future of Kirkmahoe.

There will be a public meeting on  
30<sup>th</sup> August at 7:30 in Kirkton Hall.

This is the start of our Place Planning  
process and you are invited and encouraged  
to attend.

Following this initial meeting, we will be  
contacting all Kirkmahoe residents, giving  
everyone a voice to tell us what facilities,  
including resilience measures, possible new  
housing, paths, sports and employment  
opportunities you would like to see in  
Kirkmahoe.

The meeting will establish a steering group  
to take the wishes of our community and  
use them to create a place plan. Volunteers  
will be very welcome!

---

On the 22nd and 23rd of November 2024, we hosted public events at Kirkton Hall and Dalswinton Church, inviting community members to share their ideas for future developments and improvements in Kirkmahoe. To maximise community engagement, we utilised multiple outreach channels. The event was publicly advertised on Facebook, with posters displayed on local notice boards. Emails were sent to all Kirkmahoe Community Council subscribers, ensuring direct communication. Additionally, every child at Duncow School took home a flyer, further extending our reach to families across the community.



# Event comments



**Public Transport:** Strong support for a community bus, especially for evening travel—"We like the idea of a community bus." Concerns over hospital visits and expensive taxi fares—"OAPs really cannot afford that."



**Young People:** Requests for more parks, activity spaces, and clubs—"Make it better. More activities for children, bring more families to area." Interest in advanced school technology and outdoor learning—"Outdoor classrooms and learning spaces among nature." Calls for improved cycle connectivity.



**Future Land Use:** Desire for rewilding, tree planting, and habitat creation—"Rewild areas and leave hedgerows to build habitat."  
"Plant trees and flowers for pollinators and birds"  
"Concerns over quarry impact and flooding—serious negotiation might help?"

# Event comments continued



**Facilities and Services:** Interest in a community shop, cafe, and co-working spaces—"Church at Kirkton - volunteer-led cafe and community shop." Concern over declining participation in events—"What is the reason for the poor support?" Calls for improved sports facilities.



**Traffic & Travel:** Safety concerns regarding speeding, near misses, and inadequate measures—"Do something to slow down traffic." Suggestions for improved cycle routes—"Green cycleway is a tourist attraction and can add cafes, shops."



**Flooding & Housing:** Greater flood mitigation and compensation support needed—"VAT taken off flood protection items." Mixed opinions on housing expansion—"More houses, more children, more community" vs. "Sewage would not cope."



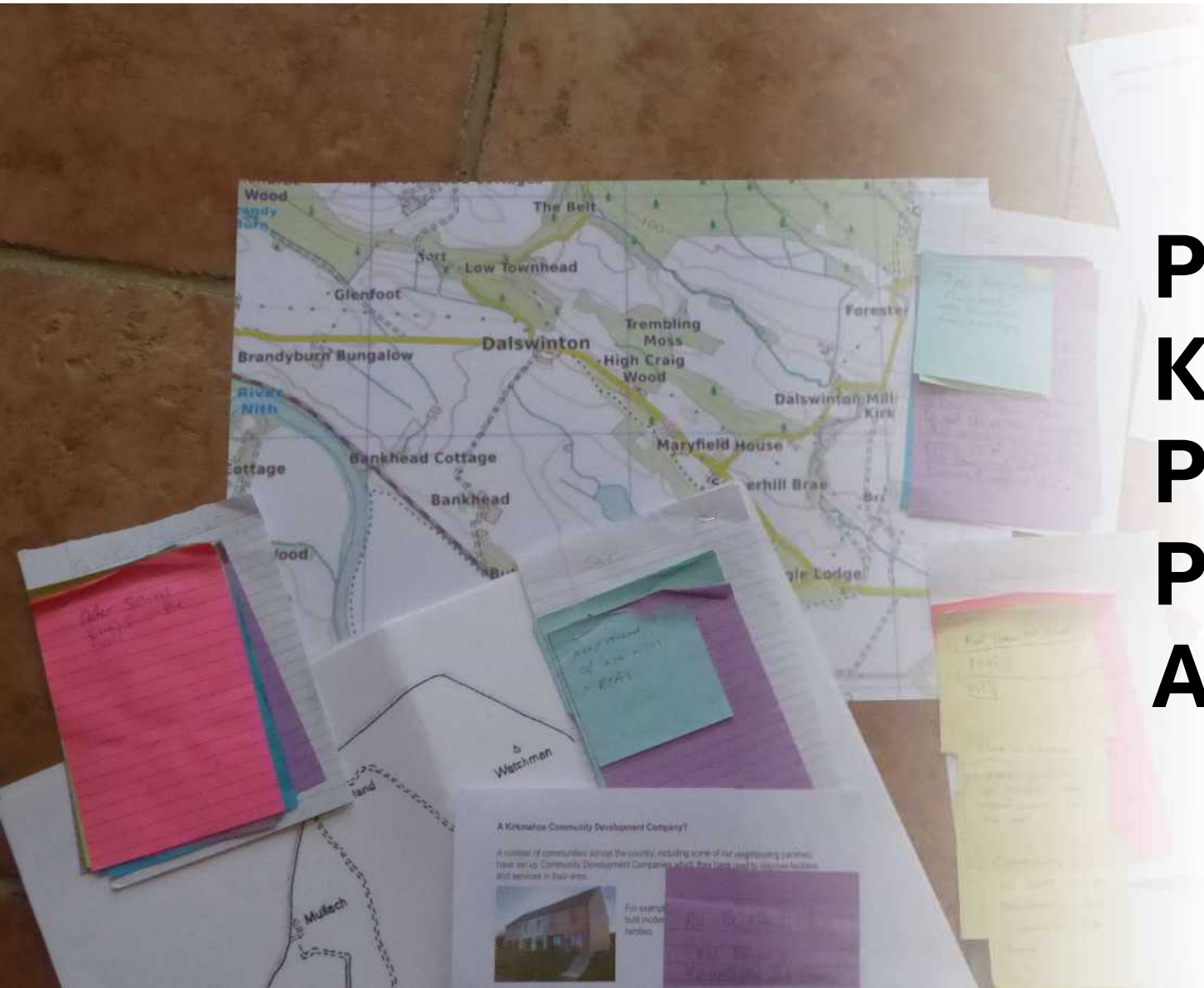
**Community Development:** Broad support for a community development company—"An excellent idea. The way forward." Requests for increased community engagement—"More community interaction - maybe events, Gala days."

# ***Vision for Kirkmahoe***

We aim for Kirkmahoe to continue to be a welcoming and inclusive rural community where everyone feels safe, valued, and connected. We are committed to fostering a thriving environment where people of all ages can live, work, and flourish. Our community cherishes the natural beauty of our surroundings, prioritising biodiversity and sustainability to protect our land for future generations. By working together, we will create a resilient and vibrant place that nurtures a strong sense of belonging and opportunity for all.



# Proposal - Kirkmahoe Place Planning Action Plan



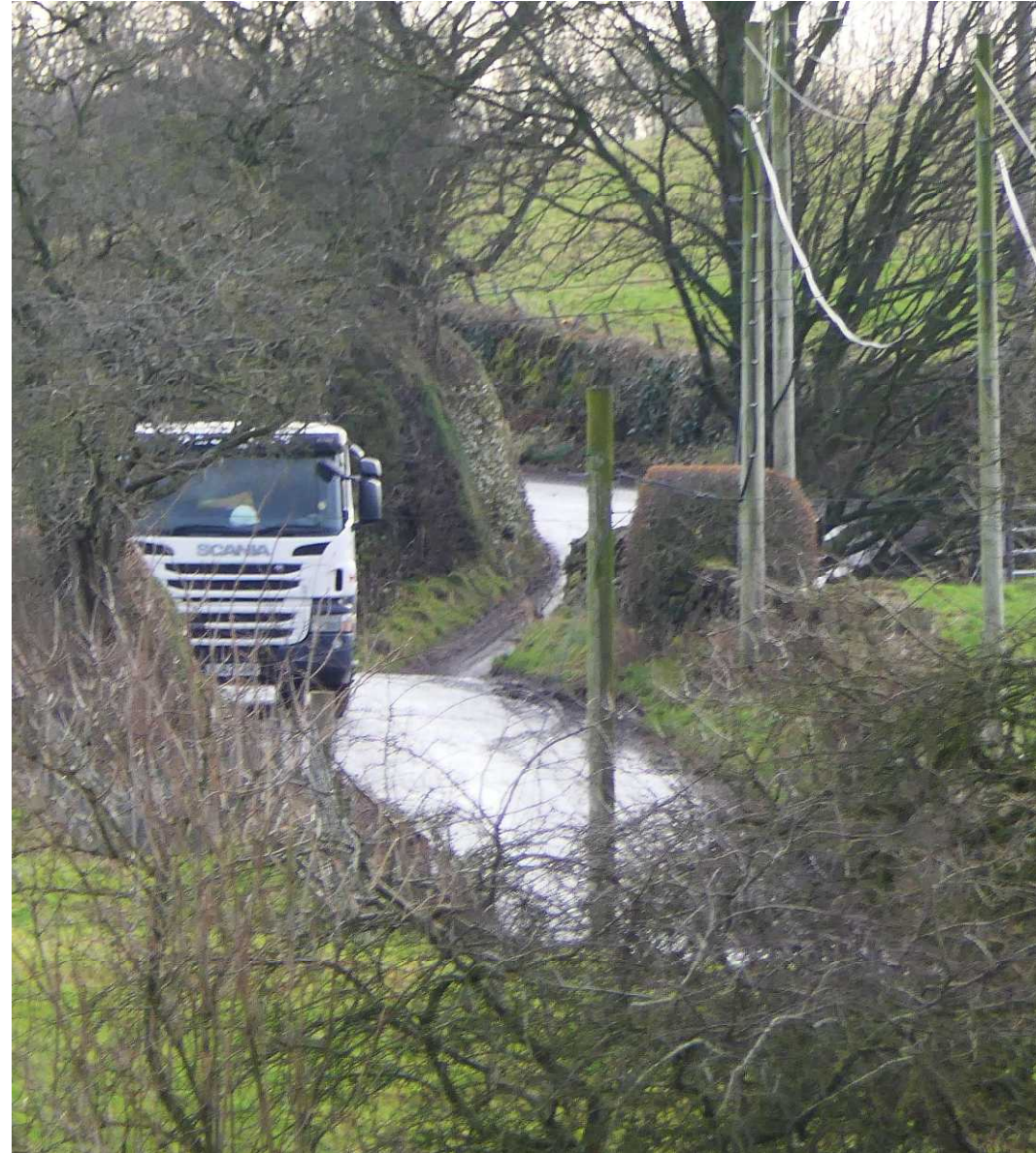
## 1. Road Safety and Traffic Management

### Short term

Install digital speed signs at Kirkton and other key areas.

Work with local authorities to introduce traffic calming measures.

Propose local speed, weight and width limits on the roads with high traffic concerns.



## 2. Transport Improvements

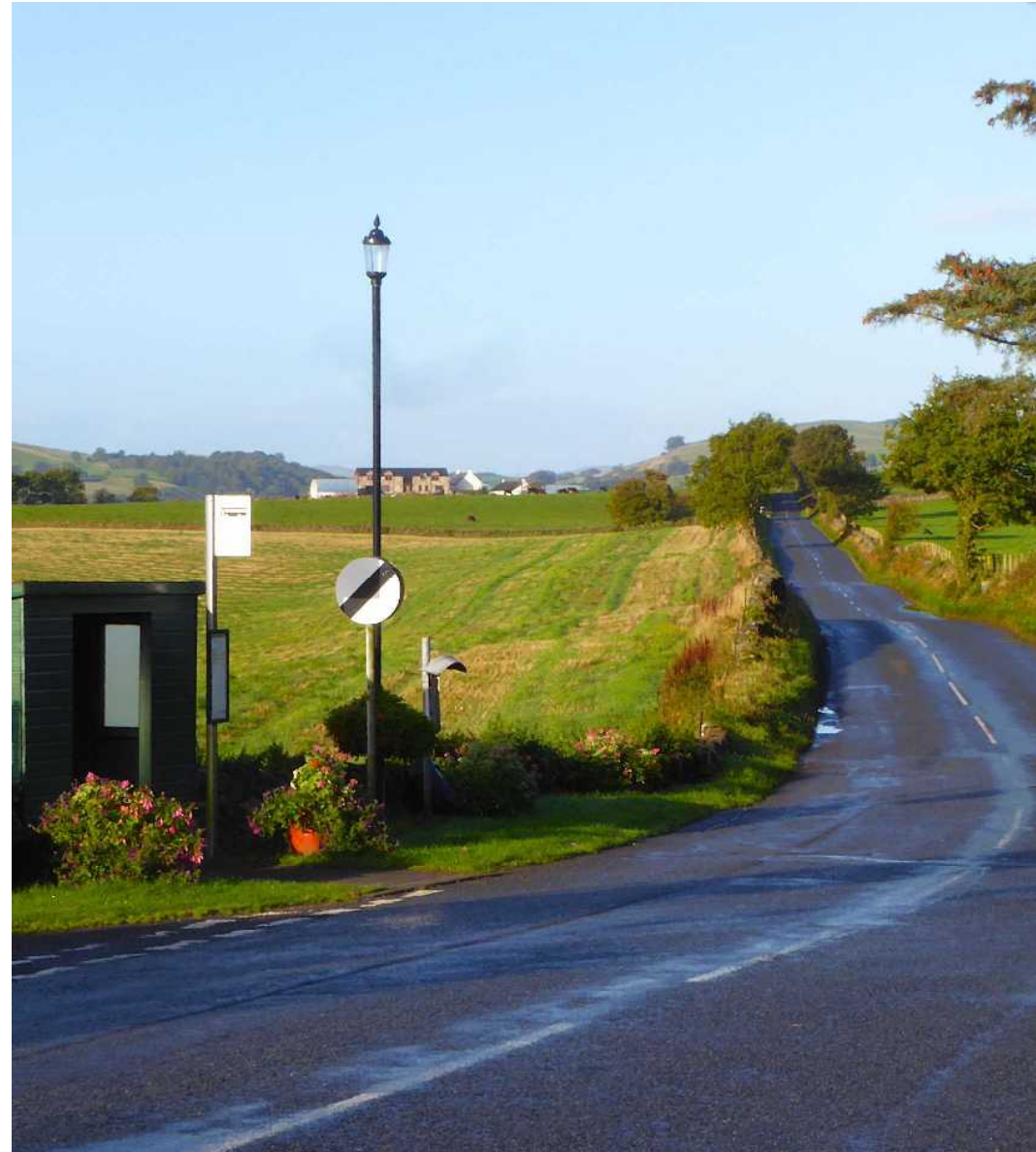
### Short term

Liaise with Dumfries & Galloway Council to enhance existing public transport links.

### Medium term

Conduct a feasibility study on a community bus service, including potential storage locations.

Identify locations for car parks in Kirkton and Duncow.



### 3. Walking and Cycling Infrastructure

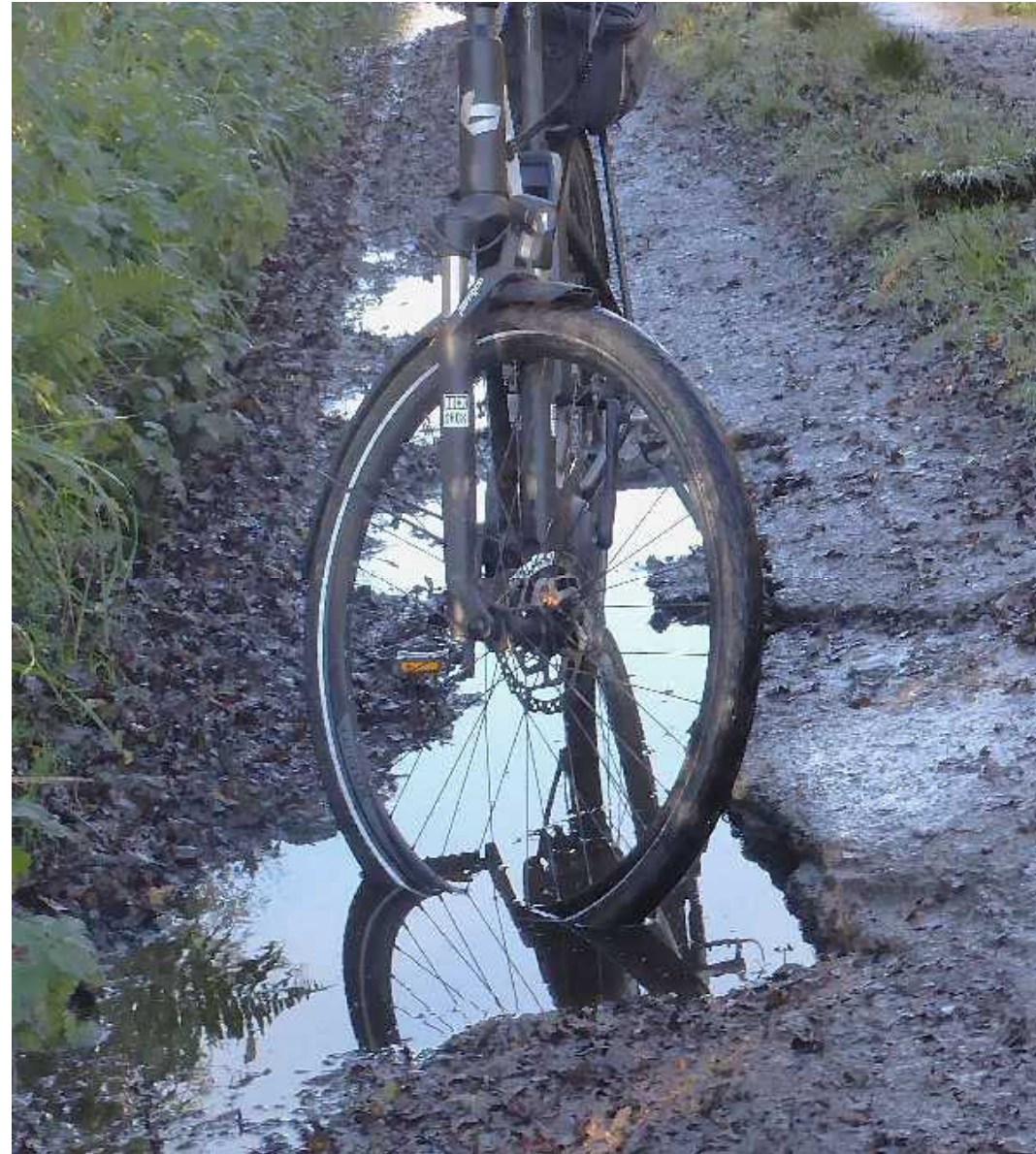
#### Short term

Install bike racks at  
Dalswinton, Duncow and Kirkton

Install reflective barriers at dangerous  
bends on the C11n

#### Long term

Secure funding for a dedicated active  
travel path from Kirkton to Duncow  
School to Dalswinton. This could be an  
integral part of a Lower Nithsdale  
Cycleway via Auldgirth continuing up the  
Nith Valley



## 4. Improve Phone Connectivity

### Short term

Engage with mobile network providers to address poor connectivity.

Investigate the feasibility of installing mobile signal/WiFi boosters in key areas.



## 5. Flooding Issues

### Ongoing

Use resources available through Scotland's National Flood Resilience Strategy.

Continue to press the council for community flood prevention measures including upgrading of Barrasgate bridge to allow better water flow.

Continue to work with local farmers and landowners to implement strategies to minimise flood risk

Work with other agencies and communities on a Nith catchment plan



## 6. Housing Development

### Long term

Identify suitable land for energy-efficient housing projects to allow residents to downsize/upsized and remain in the community.



## 7. Community Facilities and Services

### Ongoing

Protect and maintain existing community assets to ensure their long-term use and benefit.

### Medium term

Conduct a community survey on the feasibility of a café, shop, or market.

Explore potential future uses of public buildings in the event of closure, including community activities, heritage projects, or other sustainable purposes.

Identify potential spaces for a co-working facility for offices and meetings.



## 8. Future Land Use & Environmental Considerations

### Ongoing

Encourage habitat conservation and improvement.

### Medium term

Organise tree planting initiatives.

Establish birdwatching hides and a community orchard or garden.

### Long term

Ensure we make robust suggestions for restoration and use of quarry land after extraction has finished.



## 9. Enhancing Facilities for Young People

### Medium term

Identify suitable locations for a recreational bike track (pump track), mud kitchen, and covered outdoor stage.

Seek funding to create improved sports facilities and adventure playground.

### Long term

Explore the viability of a theme park and a cycleway linking Dumfries to Kirkmahoe.



# 10. Community Trust and Development Company (CTDC)

|            |   |
|------------|---|
| Establish  | Establish a Community Trust and Development Company (CTDC) to oversee and manage key projects, ensuring long-term sustainability. |
| Objectives | A Community Trust will consult with community members to develop and agree measurable objectives.                                 |
| Secure     | Secure funding and grants to support community-led initiatives and infrastructure projects.                                       |
| Encourage  | Encourage younger residents to participate in organising and running the CTDC.  |
| Promote    | Promote active participation from residents, local businesses, and external stakeholders.   |
| Build      | Build partnerships with regional and national organisations to enhance community development efforts.                             |
| Ensure     | Ensure that decisions align with community needs and long-term environmental and social benefits.                                 |
| Engage     | Engage with Dumfries and Galloway Council to advocate for necessary planning policy changes.                                      |

# Next Steps:



FORM WORKING  
GROUPS TO OVERSEE  
EACH KEY AREA.



HOLD COMMUNITY  
MEETINGS TO GATHER  
FURTHER INPUT AND  
SUPPORT.



IDENTIFY POTENTIAL  
FUNDING SOURCES AND  
PARTNERSHIPS.



SET A TIMELINE FOR  
SHORT-TERM, MID-TERM,  
AND LONG-TERM GOALS.



REGULARLY UPDATE THE  
COMMUNITY ON  
PROGRESS AND  
CHALLENGES.

# Summary:

---

The Kirkmahoe Action Plan outlines key initiatives to improve local infrastructure, services, and sustainability, including better transport, enhanced community facilities, housing development, environmental conservation, and flood prevention.

A **Community Trust and Development Company (CTDC)** is vital to drive these initiatives forward. By overseeing project management, securing funding, and ensuring long-term sustainability, the CTDC can provide structure and accountability. Without a dedicated trust, many of these ambitious projects may struggle to get off the ground or sustain momentum. For this reason, establishing the CTDC should be the **top priority**, as it will act as the foundation for all other steps in the action plan.



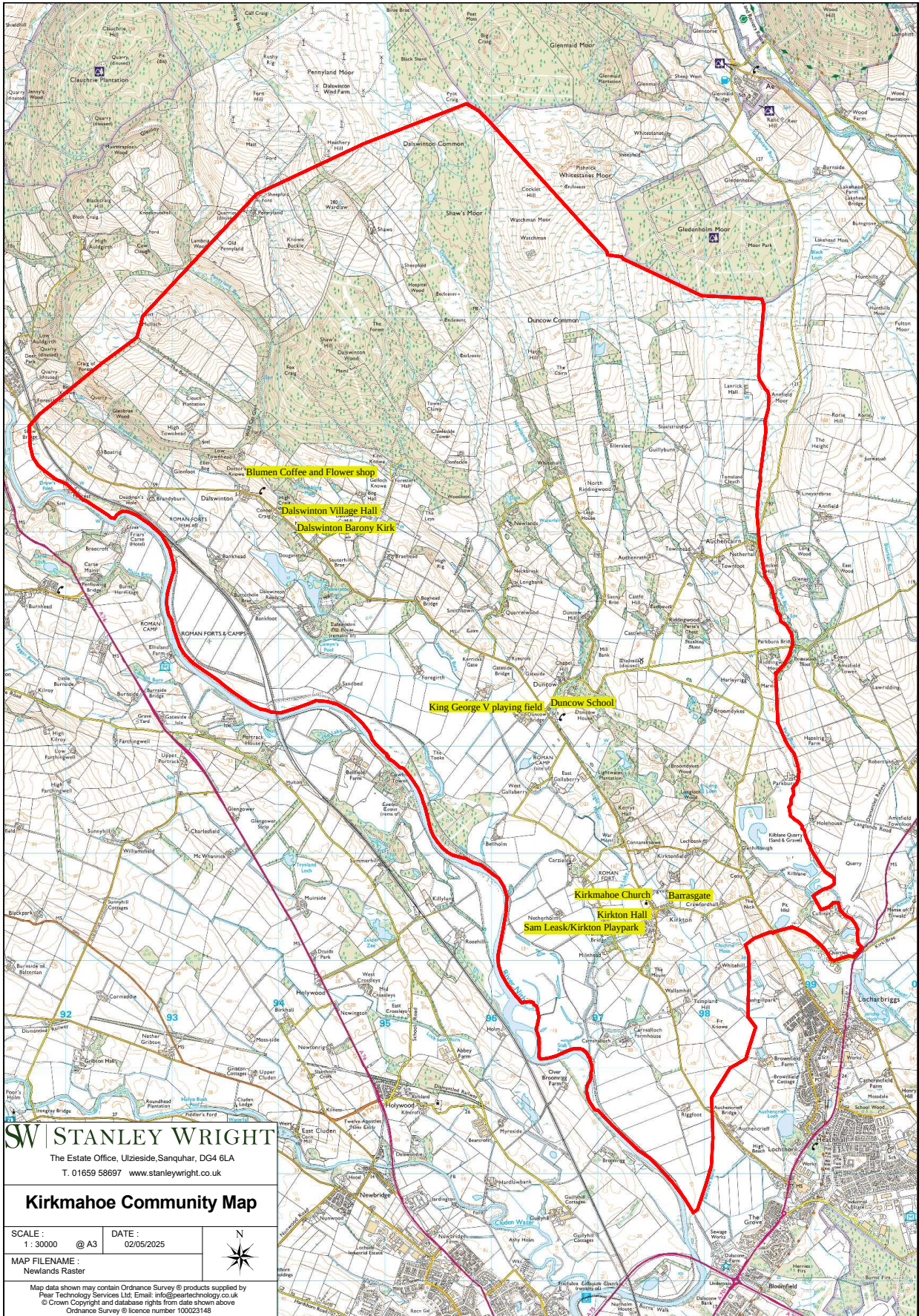
## Potential Housing Areas

Suggested possible locations for housing to be considered by all interested parties at the time of possible development.

We would like the areas identified in this Place Plan to be considered by Dumfries and Galloway Council when preparing the next local development plan.







**SW STANLEY WRIGHT**  
 The Estate Office, Ulzieside, Sanquhar, DG4 6LA  
 T. 01659 58697 www.stanleywright.co.uk

**Kirkmahoe Community Map**

SCALE: 1 : 30000 @ A3 DATE: 02/05/2025  
 MAP FILENAME : Newlands Raster



Map data shown may contain Ordnance Survey © products supplied by Peak Technology Services Ltd. Email: info@peaktechnology.co.uk  
 © Crown Copyright and database rights from data shown above  
 Ordnance Survey © licence number 100023148



# KIRKMAHOE PLACE PLANNING SURVEY

If you are able, please complete this form online by scanning the QR code or visiting the following link

<https://forms.office.com/e/tdUzsRn7tv>.

Otherwise complete this booklet and return to the red post box on Kirkton Village Hall which is above the defibrator, between the front door and the phone box or Blumen in Dalswinton.

**Please complete by the end of June.**



Change is inevitable and now is your chance to shape the future of Kirkmahoe! A Local Place Plan is part of the new Scottish planning system. This opportunity gives communities, like ours, a chance to develop proposals for their local area by expressing their hopes and aims for future change, Kirkmahoe Community Council is leading this process. Local Place Plans will then help inform decisions on applications for planning permission.

This **anonymous** questionnaire asks a series of questions about Kirkmahoe, you will be asked to rate various aspects of our local area and share what could be better in the future. During the rest of the summer, results from this survey will be collated and shared. There will then be various events for you to come and discuss the results and share what you would like the future of Kirkmahoe to look like in more detail. We are looking for input from all ages and this is a great opportunity for young people to have their voice heard. We want to hear it all – be honest, be ambitious and let's create a prosperous future for our community!

Please use the blank spaces throughout to note down any other comments or thoughts that you have. If you need help completing this form please contact the Kirkmahoe Community Council at [kccemail18@gmail.com](mailto:kccemail18@gmail.com) or 01387710523.

## About you

### 1. Please select an age bracket below

- Under 12 - If you would like to complete the under 12 form please turn to page 14, if you would like to complete the adult form please continue.
- 13-18
- 19-30
- 31-45
- 46-65
- 66-74
- 75+

### 2. Please select your Gender below.

- Male
- Female
- Prefer not to say

**3. Are you completing this survey as a household or an individual? If you need more paper copies for other people in your household please contact the community council. Alternatively, you can scan the QR code more than once.**

- Household
- Individual

# Facilities and Services

Here are some things to think about:

How well do facilities and services in my place meet my needs? (schools, care workers, social care, mobile phone reception, broadband, trades people, and community groups)

## 4. What are facilities and services like in Kirkmahoe?

Please rate the place on a scale of 1-5 (1 is poor and 5 is excellent)

|   |   |   |   |   |
|---|---|---|---|---|
| 1 | 2 | 3 | 4 | 5 |
|---|---|---|---|---|

## 5. How could we improve facilities and services?

## 6. How good are the spaces and opportunities for sport and recreation in my place?

Please rate the place on a scale of 1-5 (1 is poor and 5 is excellent)

|   |   |   |   |   |
|---|---|---|---|---|
| 1 | 2 | 3 | 4 | 5 |
|---|---|---|---|---|

## 7. What would make this better?

## 8. Care and Maintenance

Here are some things to think about:

Is your local area clean tidy, well managed and fixed when required?

Please rate the place on a scale of 1-5 (1 is poor and 5 is excellent)

## 9. How could we make it better in the future?

## Work and the Local Economy

Here are some things to think about:

How active is the local economy in my place and are there good opportunities for work, volunteering and training? (farming, forestry, engineering, quarrying, caring, tourism, construction, trades etc)

Would you like to see more opportunities for employment in Kirkmahoe?

Are there any barriers to you being employed?

## 10. How active is the local economy in Kirkmahoe, and are there opportunities for work, volunteering and training?

Please rate the place on a scale of 1-5 (1 is poor and 5 is excellent)

## 11. How could we make it better in the future?

## 12. Housing and Community

Here are some things to think about:

Is there a good mix of housing types? (different sizes, various prices, privately owned, rented, specialist housing, supported living, multi-generational)

Are homes and places able to adapt to changing circumstances? (flooding, changing climate, population changes, global health challenges, energy efficiency)

Are there any challenges? (damp/draughty homes, flooding, noise and disturbance, homelessness, anti-social behaviour)

### How well do the homes in Kirkmahoe meet my needs?

Please rate the place on a scale of 1-5 (1 is poor and 5 is excellent)

## 13. How could we make it better in the future?

# Streets, land use and the Future

## 14. Land use and the Future

Here are some things to think about:

The way we use the land is always changing, but it is likely there will be significant changes in the near future (climate, subsidies, biodiversity (changes in wildlife)).

Is there a good mix of land uses? (farming, forestry, renewable energy, conservation and quarrying)

### How do you rate the diversity of land use in Kirkmahoe?

Please rate the place on a scale of 1-5 (1 is poor and 5 is excellent)

|   |   |   |   |   |
|---|---|---|---|---|
| 1 | 2 | 3 | 4 | 5 |
|---|---|---|---|---|

## 15. Do you have any comments on land use or the future of land use in Kirkmahoe?

## 16. Streets and Natural Spaces

Here are some things to think about:

How easy is it for you to enjoy the outdoors?

What are the barriers to enjoying the outdoors/how could it be better?

### What are the streets and open spaces like in my place?

Please rate the place on a scale of 1-5 (1 is poor and 5 is excellent)

|   |   |   |   |   |
|---|---|---|---|---|
| 1 | 2 | 3 | 4 | 5 |
|---|---|---|---|---|

## 17. How could streets/roads/open spaces be improved in the future?

## Moving Around

### 18. Traffic and parking

Here are some things to think about:

Can you get to where you need to go? (Do you drive yourself? Do you have access to a car if you don't drive? What is parking like? What impact does it have? Are there options for low carbon travel?)

Are there any barriers? (Traffic volume/speed, overgrown hedges, safe crossing points, size of vehicles in relation to roads, condition of roads, electric charging points, parking).

### Do you find traffic and parking in Kirkmahoe makes it difficult for you to get around?

Please rate the place on a scale of 1-5 (1 is difficult and 5 is very easy)

|   |   |   |   |   |
|---|---|---|---|---|
| 1 | 2 | 3 | 4 | 5 |
|---|---|---|---|---|

**19. How could traffic and parking be improved in the future?**

**20. Walking and cycling**

Here are some things to think about:

If you are not using a car, are paths and routes suitable? (walk, wheel, or cycle, adapted bikes).

Are there any barriers? (traffic volume/speed, overgrown hedges, safe crossing points, size of vehicles in relation to roads, condition of roads, mobility aid or bike parking or storage).

**How easy is it for you to move around without a car and get to where you want to go?**

Please rate the place on a scale of 1-5 (1 is difficult and 5 is very easy)

|   |   |   |   |   |
|---|---|---|---|---|
| 1 | 2 | 3 | 4 | 5 |
|---|---|---|---|---|

**21. How could we make walking and cycling easier?**

## 22. Public Transport

Here are some things to think about:

Do you rely on public transport to get to where you need to be? Is it a good option?

Are there any barriers? (reliability, frequency, is information easy to find, easy to use, clear and accessible)

### What is public transport like in Kirkmahoe?

Please rate the place on a scale of 1-5 (1 is poor and 5 is very excellent)

## 23. How could we make it better in the future?

# Sense of Control

## 24. Influence and sense of control

Here are some things to think about:

Does the community have a voice? Are you listened to? Are there effective local groups?

### **When things happen in Kirkmahoe how well are you listened to and included in decision making?**

Please rate the place on a scale of 1-5 (1 is poor and 5 is excellent)

|   |   |   |   |   |
|---|---|---|---|---|
| 1 | 2 | 3 | 4 | 5 |
|---|---|---|---|---|

## 25. How could we make it better in the future?

## 26. Feeling Safe

Here are some things to think about:

Do you generally feel safe in Kirkmahoe? (daytime, evening and night-time, children and teenagers, adults and older people, women)

Are there areas that feel unsafe? (lighting, derelict buildings, empty homes, vacant land, flooding, clean/clear paths,)

Are there other issues? (litter and graffiti, hidden or unreported crimes, unsafe at specific times/ certain places, traffic speed and volume)

### **How safe do I feel in Kirkmahoe? (day and night)**

Please rate the place on a scale of 1-5 (1 is very unsafe and 5 is very safe)

|   |   |   |   |   |
|---|---|---|---|---|
| 1 | 2 | 3 | 4 | 5 |
|---|---|---|---|---|

**27. How would make you feel safer?**

**28. Social Interaction**

Here are some things to think about:

Can everyone join in and mix? (neighbourliness, groups you can join). Where can people meet? Do people help each other in a crisis? How do people find out what's happening?

**How good is the range of opportunities which allow you to meet and spend time with other people?**

Please rate the place on a scale of 1-5 (1 is poor and 5 is excellent)

**29. What other opportunities would you like in Kirkmahoe?**

### 30. Identity and Belonging

Here are some things to think about:

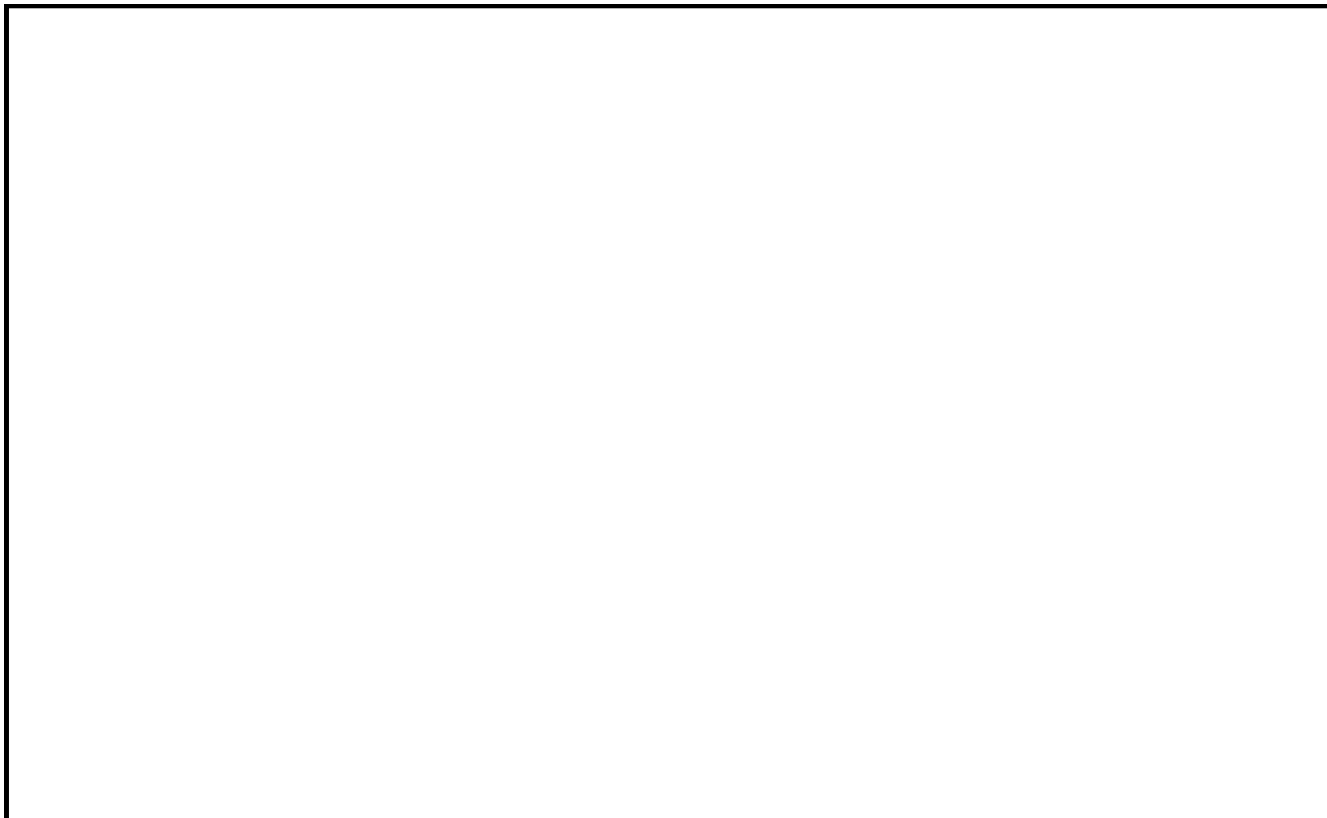
How much do you feel at home here? Friendliness? Would you recommend Kirkmahoe as a place to live?

**To what extent does Kirkmahoe have a positive identity that supports a strong sense of belonging?**

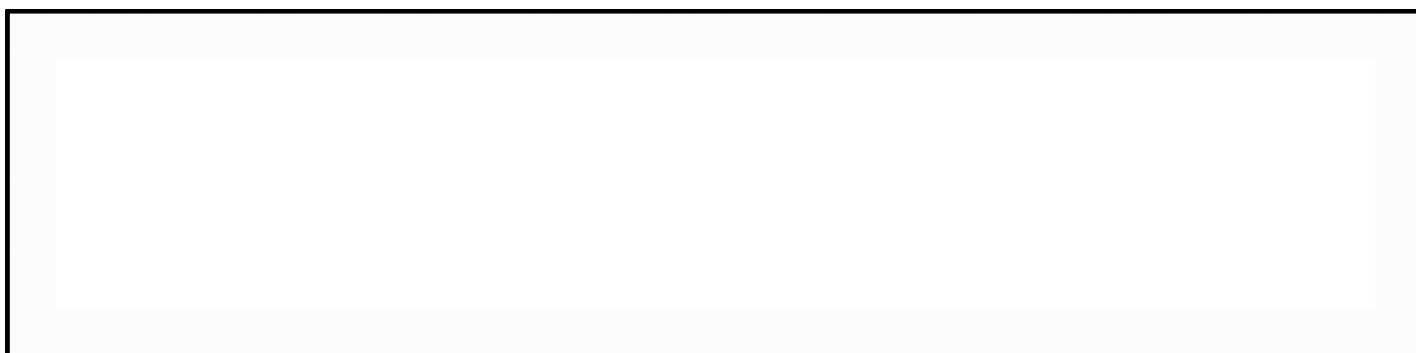
Please rate the place on a scale of 1-5 (1 is poor and 5 is excellent)

### 31. How could we make it better in the future?

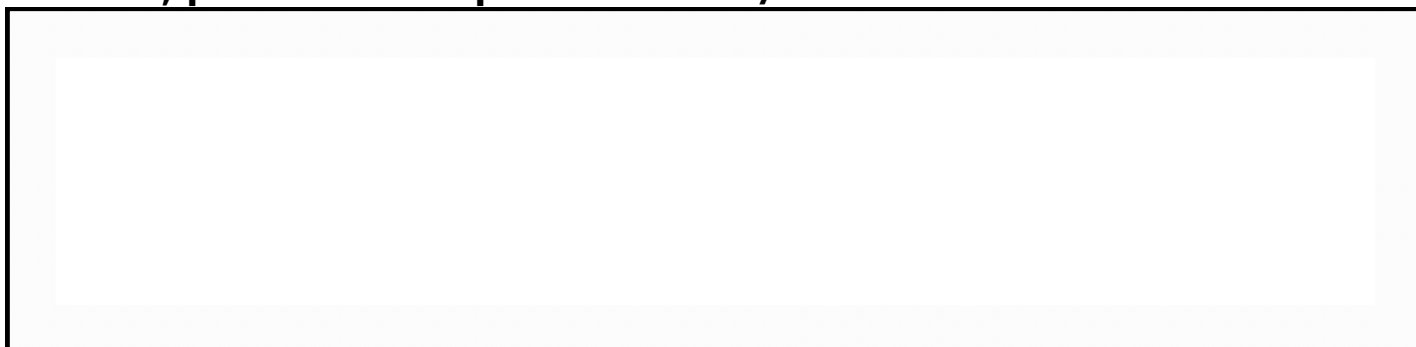
**32. Please share any other opinions, comments etc. in the box below.**



**33. If you would like to help with the Place Planning please put your contact details below.**



**34. If you would like to be entered into the prize draw, to win a £25 voucher, please leave a phone number/email address below.**



# Additional Questions for those aged between 13 and 18

**35. How easy is it for you to find a full-time or part-time job? What kind of work would you be looking for?**

**36. Do you see yourself living in Kirkmahoe in 10 years time?**

- Yes
- No
- Maybe

**37. What would prevent you from living here in 10 years time?**

# Under 12's questions

## 1. How safe are the areas where you play?

1 smiley face is bad, 5 smiley faces is excellent.



## 2. How clean are the areas where you play?

1 smiley face is bad, 5 smiley faces is excellent.



## 3. Do you have friends that live near you?

- Yes
- No

## 4. How easy is it for you to walk/cycle/scooter/roller skate in Kirkmahoe?

1 smiley face is bad, 5 smiley faces is excellent.



## 5. How easy is it for you to meet with other children outdoors?

1 smiley face is bad 5, smiley faces is excellent.



6. How much do you enjoy trees, wild animals, birds and plants in Kirkmahoe?

1 Smiley face not a lot, 5 smiley faces is a lot



**7. Do you feel proud to be part of Kirkmahoe?**

- Yes**
- No**
- Not sure**

8. What do you like about living in Kirkmahoe?

9. What would make Kirkmahoe a better place to live?



# Consultation Comments

Only two written comments were received. A number of people commented verbally that the plan reflected our situation well and that the residents do not want the area to be fundamentally change its character.

The written comments, and our responses were:

“Flooding in Kirkmahoe would be reduced if the Nith was dredged between Dumfries and Kingholm Quay”

This is not actionable by the Community Council, although we continue to raise our concerns about the effect on Kirkmahoe of the proposed flood measures in Dumfries town Centre.

And

“Lack of pavement for safe walking especially to school”

Our Proposed safe travel route would address that problem.