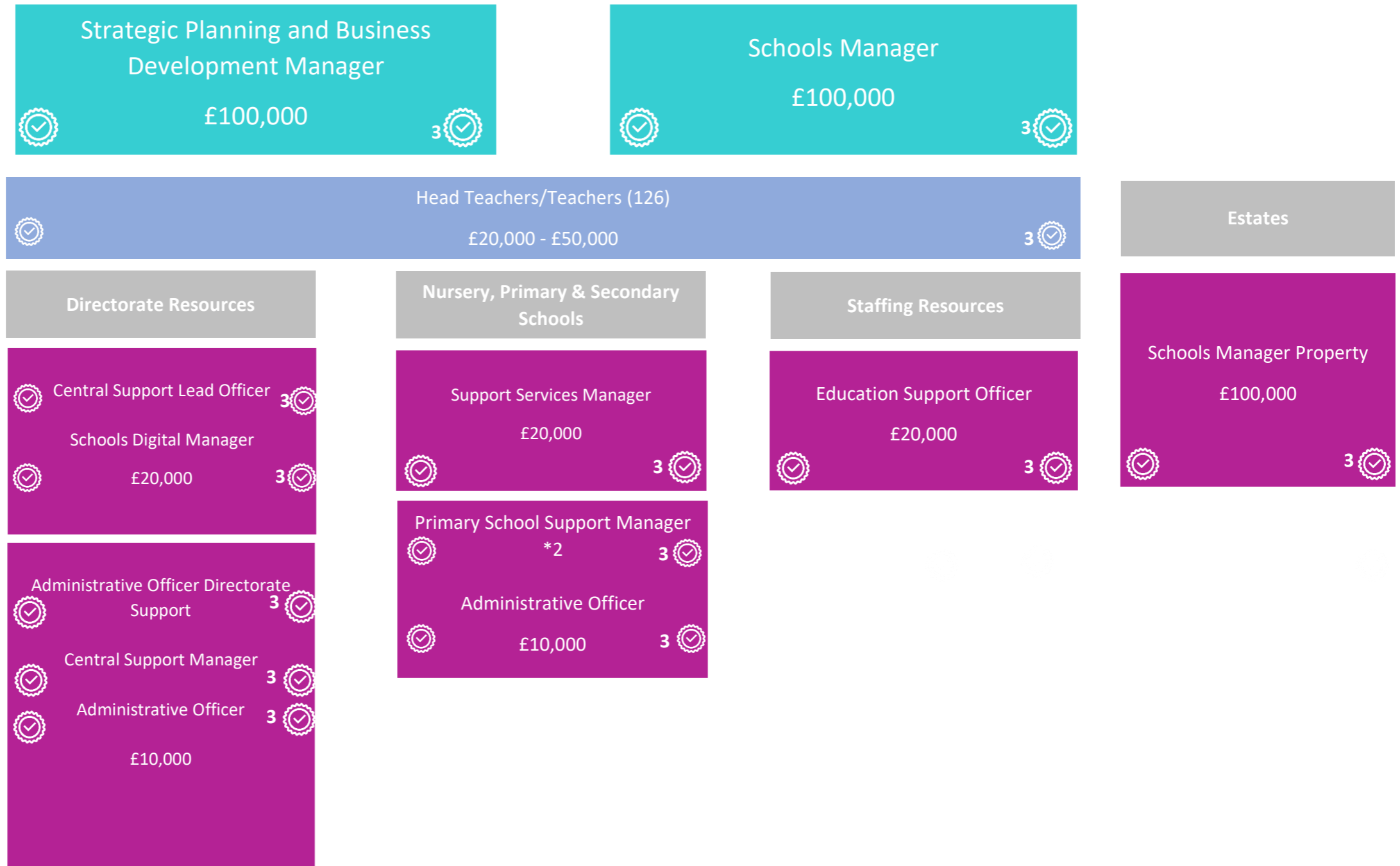


Education, Skills and Community Wellbeing

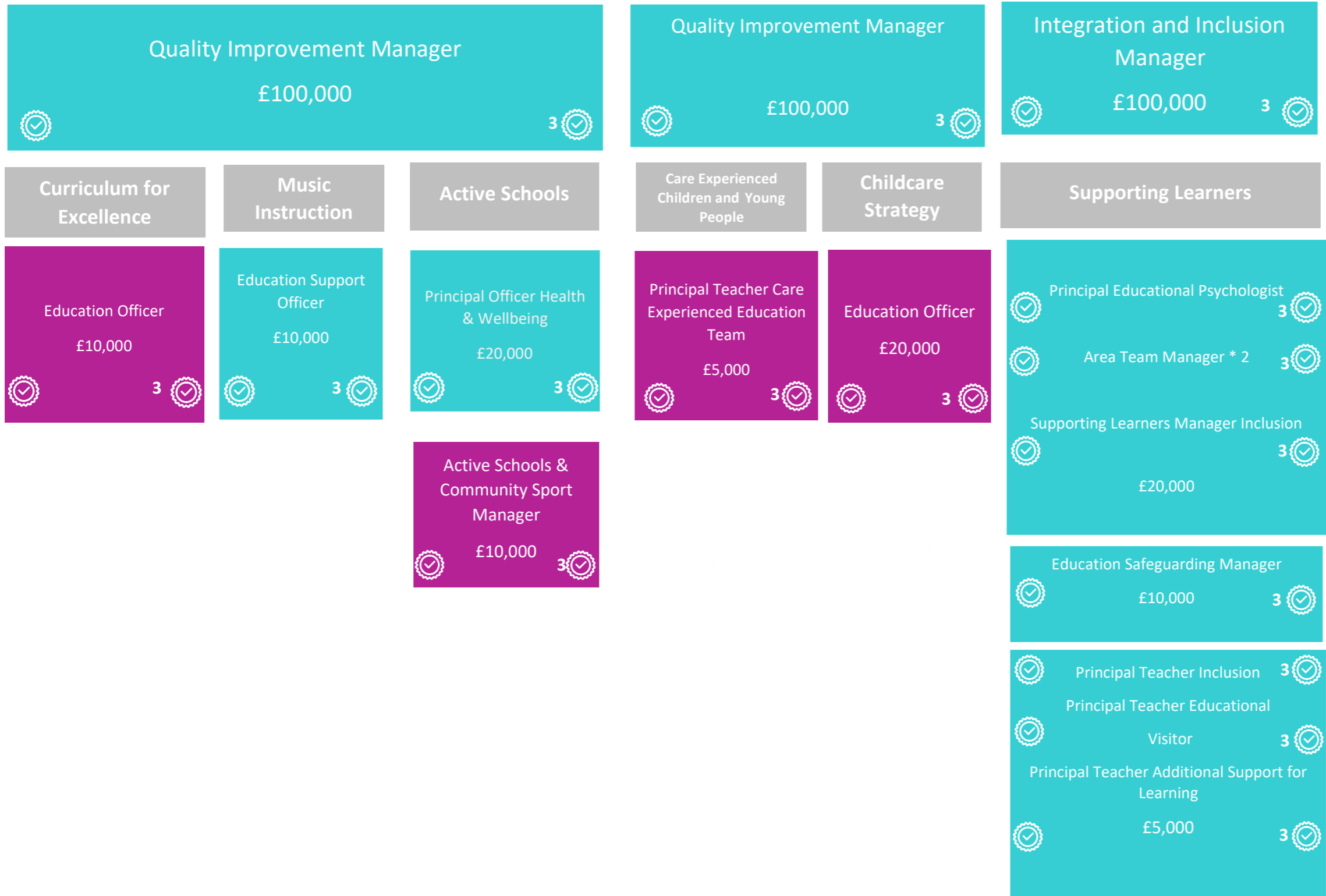


	Left – Procurement Training (1 Module)
	Right – Budget Holder Training (3 Modules)
	Budget Holder
	Not a Budget Holder

Nursery, Primary & Secondary Education



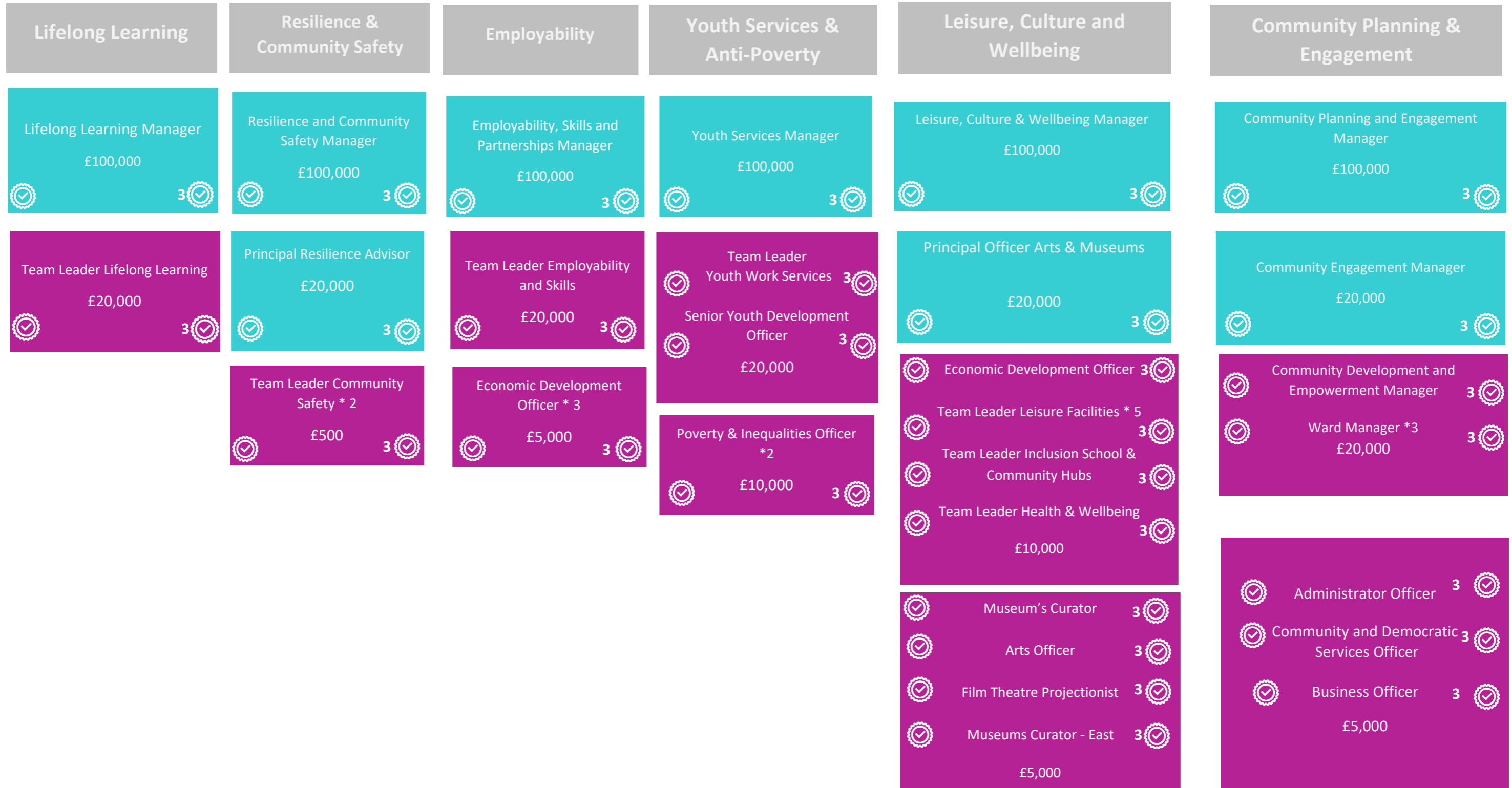
Directorate Curriculum



Thriving Communities

Head of Thriving Communities
£500,000





3



Social Work Services

Service Director Social Work Services
(CSWO)
£1,000,000 3

Children & Families Social Care	Justice	Social Work Service Strategy	Mental Health	Public Protection	Finance & Information
<p>Head of Children, Families and Justice Services (DCSWO) £500,000 3</p>	<p>Social Work Services Senior Operational Manager Adult Care £500,000 3</p>			<p>Public Protection Manager £100,000 3</p>	<p>Finance & Information Manager £100,000 3</p>

 Left – Procurement Training (1 Module)
 Right – Budget Holder Training (3 Modules)
 Budget Holder
 Not a Budget Holder

Children and Families Social Care

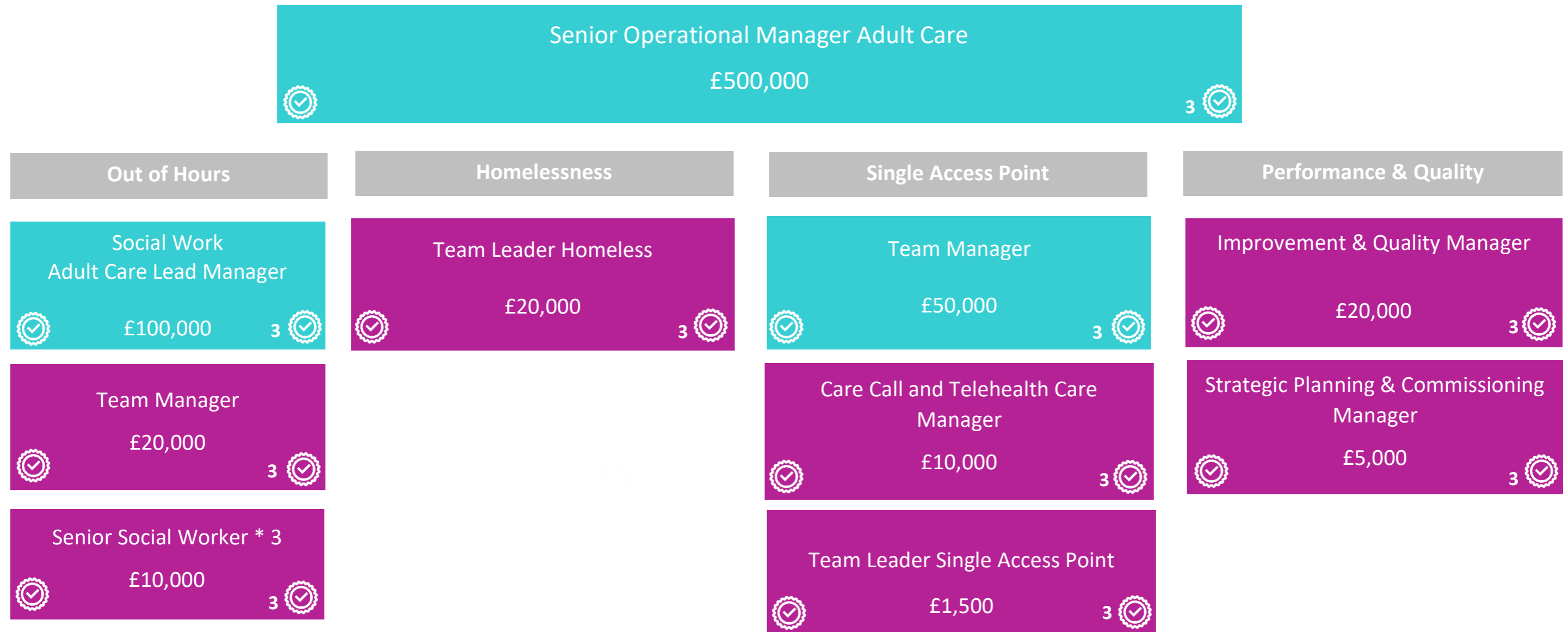


Note – The above structure is currently subject to review by the Depute CSWO.

Justice Social Work



Social Work Strategy



Mental Health

Senior Operational Manager
Adult Care

£500,000

3



Adult Care Lead Manager



£100,000

3



Team Manager

£20,000



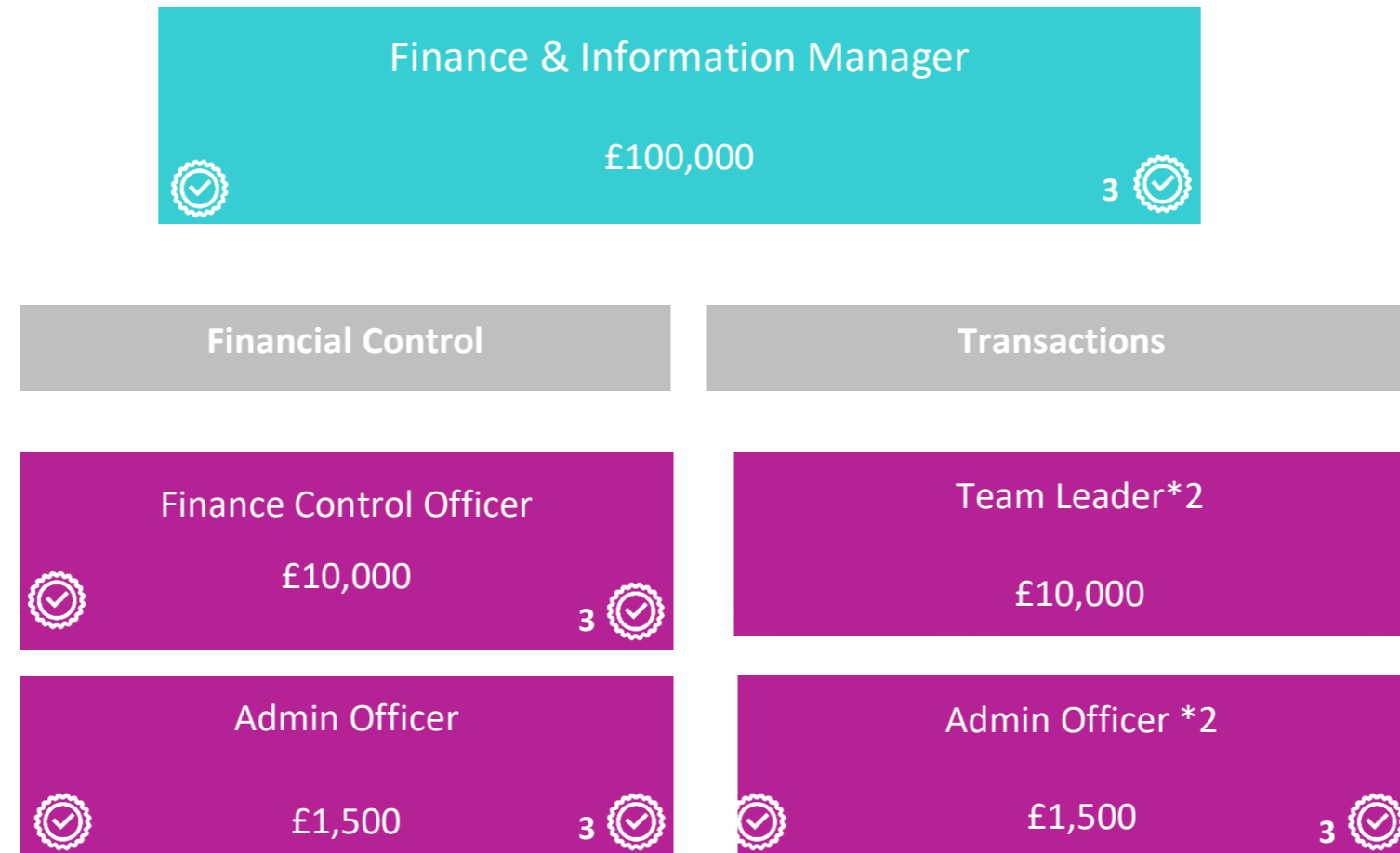
Senior Social Worker * 3

£10,000

3



Finance & Information/Transactions



Public Protection

Public Protection Manager
£50,000

3

Community Justice Partnership
Manager
£20,000

3

Violence Against Women and Girls
Co-ordinator

Lead Officer Public Protection *2

£10,000

IJB

Chief Social Work Officer 3
 Deputy Chief Officer (NHS) 3
 £1,000,000



- Budget Holder
- Not a Budget Holder

Mosaic Limits

Locality Manager £93,600

Team Manager/SSW £31,304

Internal Controls exist for care packages greater than £90,000 which require General Manager approval

Note – The overall authorisation approach adopted by the IJB is different to that adopted by the Council, with multiple authorisers across each functional area, reflecting a segregation of budget holder responsibilities for separate activities. This approach results in the same authoriser being reflected in the structure multiple times. Measures to ensure that there is a clear and effective understanding of budget holder responsibility by each authoriser has been confirmed by the Service.

Management & Governance

✔ Senior Operational Manager Adult Care ✔
General Manager HSC
✔ £500,000 3 ✔

✔ 2 x Social Work Adult Care Lead Manager 3 ✔
✔ Finance and Information Manager 3 ✔
£100,000

Adult Support & Protection







Senior Operational Manager Adult Care General Manager HSC	3
General Manager Mental Health £500,000	3
2 x Social Work Adult Care Lead Manager £100,000	3
Social Work Manager Adult Services £20,000	3
Team Manager Adult Services £10,000	3
3 x Senior Social Workers £5,000	3

Mental Health Directorate

 	Senior Operational Manager Adult Care General Manager Mental Health £500,000	3  3 
  	2 x Social Work Adult Care Lead Manager NHS Care Lead Manager Finance and Information Officer £100,000	3  3  3 
 	Team Manager Learning Disability Service 1 x Social Work Manager Adult Services £20,000	3  3 
	2 x Team Manager Adult Services 2 x Senior Day Community and Home Support Services Manager £10,000	3  3 
 	8 x Day Community and Home Support Services Manager 6 x Senior Social Worker £5,000	3  3 




Adult Services Regional

 Senior Operational Manager Adult Care³ 
 General Manager HSC  3
 £500,000


 2 x Social Work Adult Care Lead Manager  3
 Divisional Manger for Care and Support at Home
 (NHS)  3
 Divisional Manager for the Community Bed and
 Supported Living Division (NHS)
  3
 £100,000

Principal Manager Support & Reablement Service
  3
 Deputy Head of Strategic Planning and
 Commissioning (NHS)  3
 Public Protection Manager  3
 Team Manager Adult Services  3
 Public Health Improvement Manager (NHS)  3
 £50,000

 Service Development Liaison Officer  3
 Contracts manager, Strategic Planning and
 Transformation Directorate (NHS)  3
 Violence against Women and Girls Co-ordinator  3
 £10,000


 4 x Area Managers  3
 Lead Officer Public Protection  3
 Senior Telehealthcare Assessor  3
 £5,000



Short Term Care

 	Senior Operational Manager Adult Care General Manager HSC £500,000	3  3 
  	Divisional Manager NHS Service Manager NHS Finance & Information Officer £100,000	3  3  3 
  	2 x Social Work Manager Adult Services 8 x Home Team Lead Lead AHP - Community Health & Social Care Team Manager Adult Services £20,000	3  3  3 
 	Team Manager Adult Services Senior Occupational Therapist £10,000	3  3 
	8 x Senior Social Worker £5,000	3 

Economy and Infrastructure



 Left – Procurement Training (1 Module)
Right – Budget Holder Training (3 Modules)

 Budget Holder
 Not a Budget Holder

Transport and Infrastructure

Assistant Director Transport and Infrastructure
£1,000,000












Fleet Management

Transport & Operations Manager
£100,000






Fleet Compliance Officer * 3
Radio Maintenance Unit Manager
Team Leader Vehicle Maintenance
Project Manager Transport

£20,000












Sustainable Travel

Transportation Manager
Lead Officer SWESTRANS
£100,000

Senior Transport Officer
£10,000

Property

Property, Estates and Programmes Manager
£100,000




Project and Programme Management Officer Leader
£20,000




Multi Trades Supervisor *2
£5,000




Estates and Asset Management Officer
£20,000




Corporate Landlord Leader
£20,000




Senior Programme Manager
£20,000




Roads

Roads Service Manager
£100,000






Team Leader Roads Network Management
£20,000






Team Leader Roads Network Management
3






Team Leader Network Strategy & Road Safety
3


Team Leader Roads Planning
3



Team Leader Infrastructure Assets
3

Team Leader Roads Maintenance & Network Co-ordination
£20,000




Operations Officer *2
£5,000

Engineering Design / Street Lighting

Engineering Design Manager
£100,000




Team Leader Street Lighting
£20,000




Engineer/Senior Engineer *2
£20,000




Management Support
£10,000

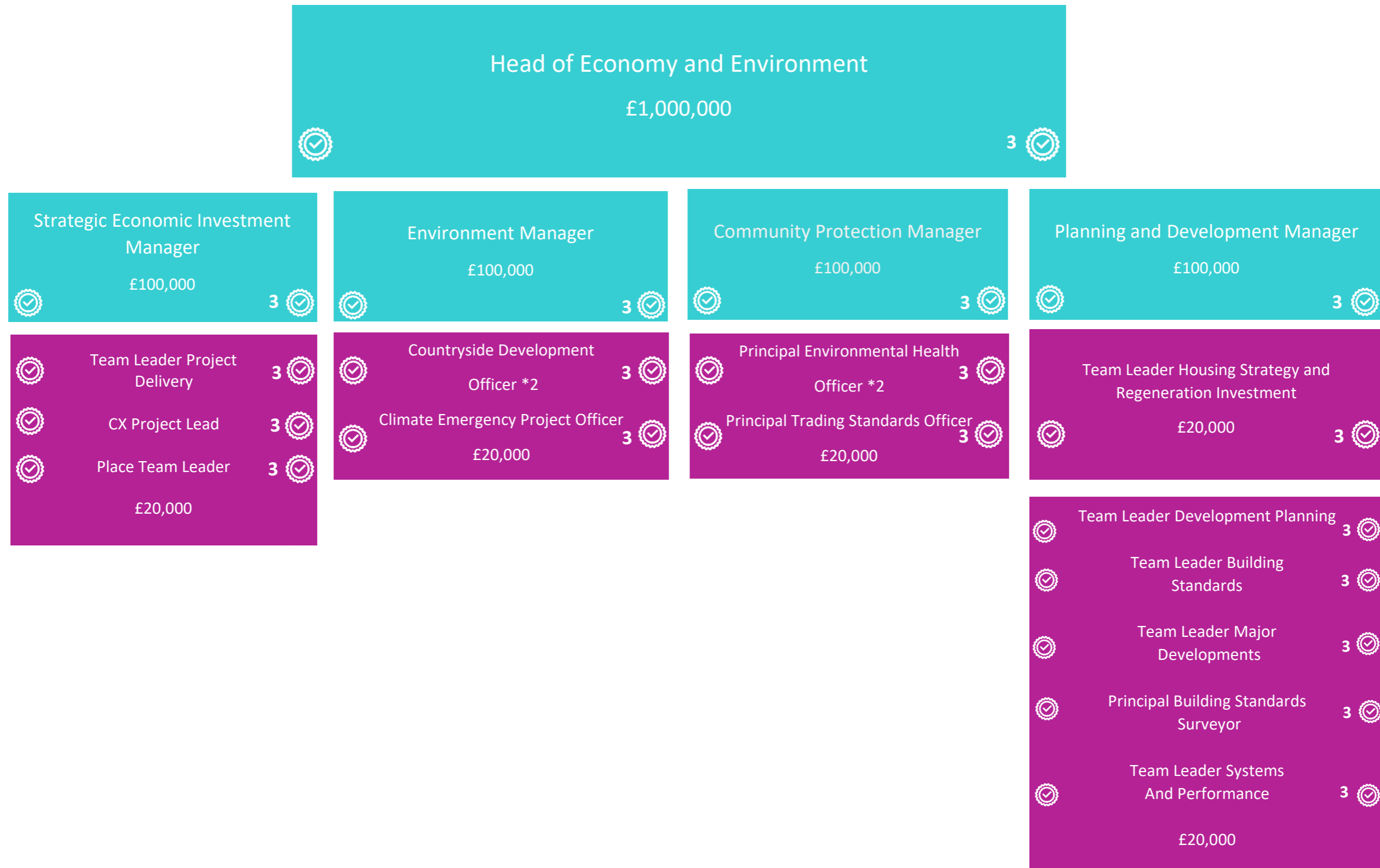



C
A
P
I
T
A
L

Facilities, Waste and Neighbourhood Services



Economy and Environment



Enabling and Customer Services

Executive Director Enabling and Customer Services
£2,000,000

3

Assistant Director
Governance and Human
Resources
(Monitoring Officer)
£500,000

3

Chief Financial Officer
(Section 95 Officer)
£1,000,000

3

Assessor and Electoral
Registration Officer
£100,000


3


Head of Customer and
Digital
£500,000


3

Directorate Business
Manager
£20,000

3

 Left – Procurement Training (1 Module)
Right – Budget Holder Training (3 Modules)

 Budget Holder

 Not a Budget Holder

Governance and Human Resources

Assistant Director Governance and Human Resources
(Monitoring Officer)
£500,000

3

Governance and Assurance	Democratic Services	Human Resources	Communications	Business Intelligence	Internal Audit
Governance and Assurance Manager £100,000 3	Democratic Services Manager £20,000 3	Human Resources Manager £100,000 3	Communications Manager £20,000 3	Business Intelligence Manager £20,000 3	Chief Internal Auditor £20,000 3
Office Manager £5,000 3	Information Governance Manager £10,000 3	Pensions Manager £20,000 3	Policy and Communications Lead Officer £5,000 3		
Governance & Elections Support Officer 3 Licensing Manager £5,000 3	Elections Co-Ordinator 3 Information Governance Officer £5,000 3	Pensions Officer £20,000 3			
	Governance & Committee Support Officer 3 Snr Governance Officer £1,500 3				

Finance & Procurement

Chief Financial Officer
(Section 95 Officer)
£1,000,000

3

Service Finance Support Manager
£100,000

3

Corporate Finance and Accounting Manager (Deputy s95 officer)
£100,000

3

Treasury and Capital and Pension Fund Investment Manager
£100,000

3

Procurement, Commissioning and Payments Manager
£100,000

3

Financial Wellbeing and Revenue Manager
£100,000

3

Pay and Employment Services Manager *3
£20,000

3

Revenues and Benefits Operational Team

- Leader 3
- FWR Support Team Leader 3

£20,000

The limit above for the Head of Finance & Procurement does not apply to treasury management transactions for which separate arrangements and limits are agreed annually by Full Council as part of the Council's Treasury Management Strategy

Assessor & Electoral Registration

Assessor and Electoral Registration Officer
(ERO)
£100,000

3

Depute Assessor and Electoral Registration Officer
£20,000

3

Principal Valuer
£20,000

3

Principal Valuer and Assistant
Electoral Registration Officer
£20,000

3

Customer and Digital

