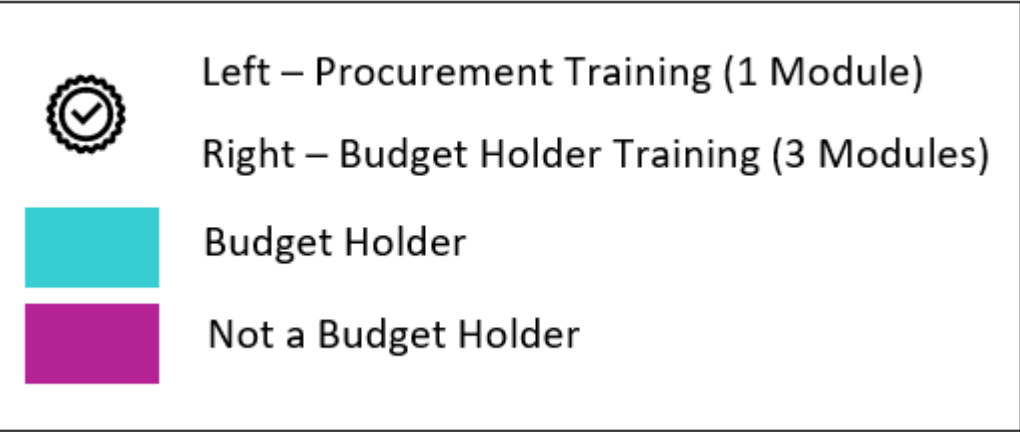
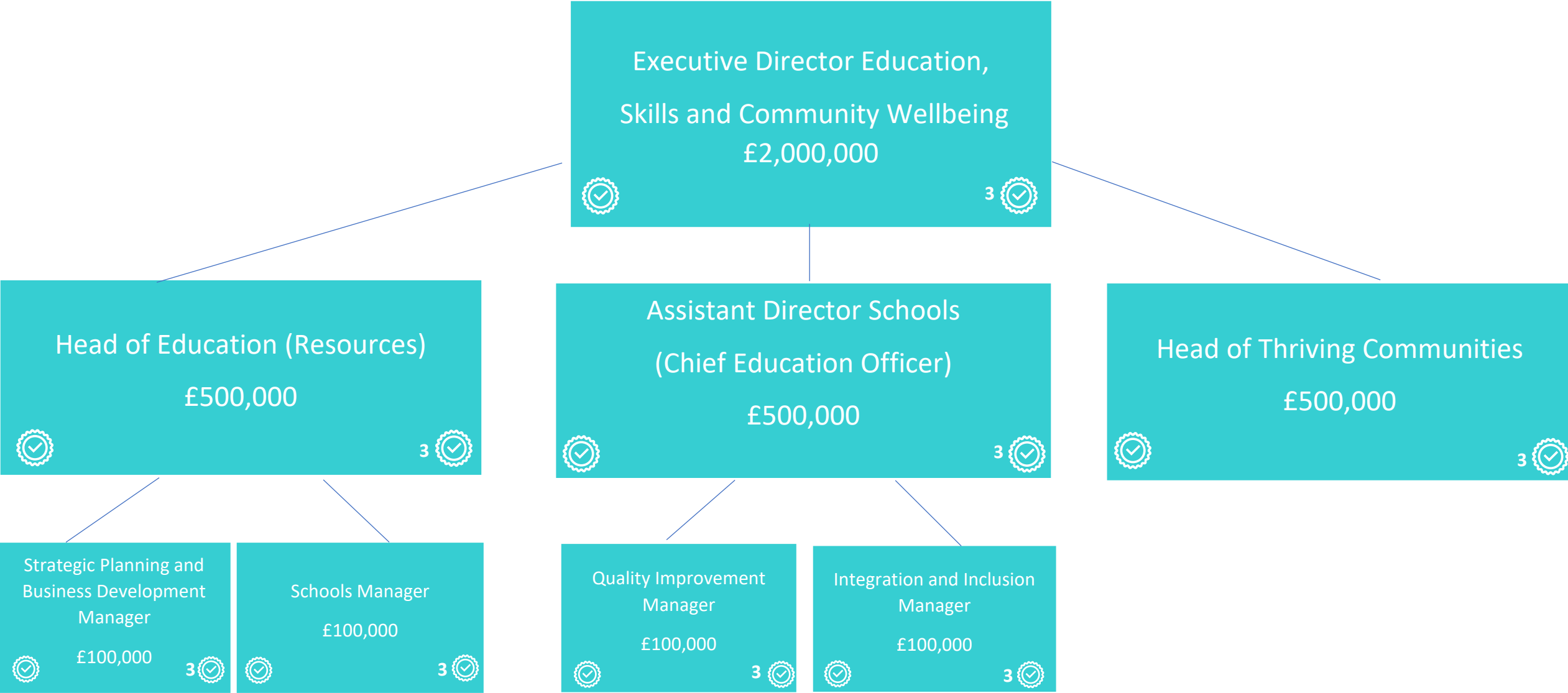


Education, Skills and Community Wellbeing



Nursery, Primary & Secondary Education

Strategic Planning and Business Development Manager

£100,000

3

Schools Manager

£100,000

3

Head Teachers/Teachers (126)

£20,000 - £50,000

3

Estates

Directorate Resources

Nursery, Primary & Secondary Schools

Staffing Resources

Schools Manager Property

£100,000

3

Central Support Lead Officer

Schools Digital Manager

£20,000

3

Support Services Manager

£20,000

3

Education Support Officer

£20,000

3

Administrative Officer Directorate Support

Central Support Manager

Administrative Officer

£10,000

3

Primary School Support Manager

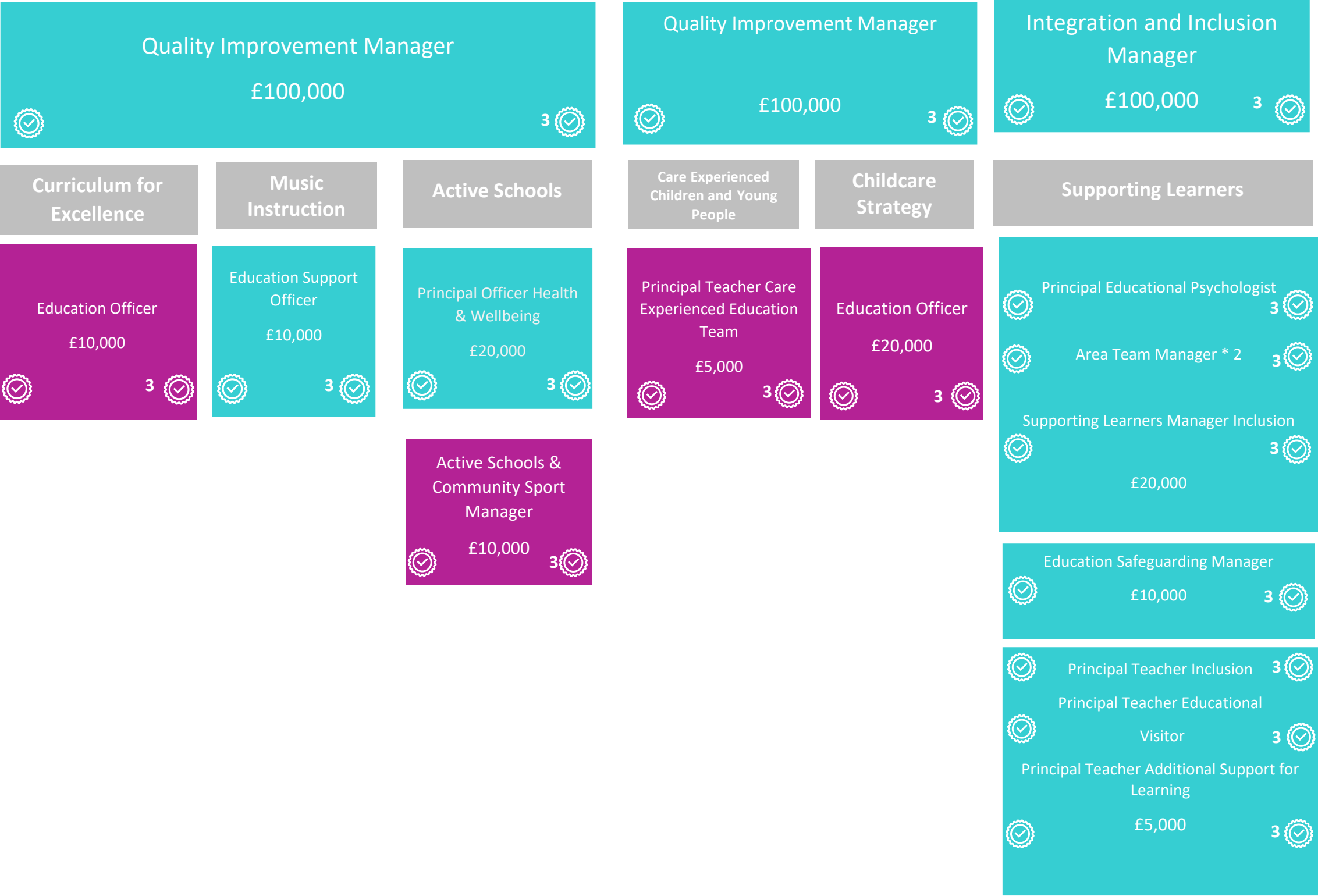
*2

Administrative Officer

£10,000

3

Directorate Curriculum








Thriving Communities

Head of Thriving Communities

£500,000


3

Lifelong Learning	Resilience & Community Safety	Employability	Youth Services & Anti-Poverty	Leisure, Culture and Wellbeing	Community Planning & Engagement
<div>Lifelong Learning Manager</div> <div>£100,000</div> <div>3</div>	<div>Resilience and Community Safety Manager</div> <div>£100,000</div> <div>3</div>	<div>Employability, Skills and Partnerships Manager</div> <div>£100,000</div> <div>3</div>	<div>Youth Services Manager</div> <div>£100,000</div> <div>3</div>	<div>Leisure, Culture & Wellbeing Manager</div> <div>£100,000</div> <div>3</div>	<div>Community Planning and Engagement Manager</div> <div>£100,000</div> <div>3</div>
<div>Team Leader Lifelong Learning</div> <div>£20,000</div> <div>3</div>	<div>Principal Resilience Advisor</div> <div>£20,000</div> <div>3</div>	<div>Team Leader Employability and Skills</div> <div>£20,000</div> <div>3</div>	<div>Team Leader Youth Work Services</div> <div>£20,000</div> <div>3</div> <div>Senior Youth Development Officer</div> <div>£20,000</div> <div>3</div>	<div>Principal Officer Arts & Museums</div> <div>£20,000</div> <div>3</div>	<div>Community Engagement Manager</div> <div>£20,000</div> <div>3</div>
	<div>Team Leader Community Safety * 2</div> <div>£500</div> <div>3</div>	<div>Economic Development Officer * 3</div> <div>£5,000</div> <div>3</div>	<div>Poverty & Inequalities Officer *2</div> <div>£10,000</div> <div>3</div>	<div>Economic Development Officer</div> <div>3</div> <div>3</div> <div>Team Leader Leisure Facilities * 5</div> <div>3</div> <div>3</div> <div>Team Leader Inclusion School & Community Hubs</div> <div>3</div> <div>3</div> <div>Team Leader Health & Wellbeing</div> <div>£10,000</div> <div>3</div>	<div>Community Development and Empowerment Manager</div> <div>3</div> <div>3</div> <div>Ward Manager *3</div> <div>£20,000</div> <div>3</div>
				<div>Museum's Curator</div> <div>3</div> <div>3</div> <div>Arts Officer</div> <div>3</div> <div>3</div> <div>Film Theatre Projectionist</div> <div>3</div> <div>3</div> <div>Museums Curator - East</div> <div>£5,000</div> <div>3</div>	<div>Administrator Officer</div> <div>3</div> <div>3</div> <div>Community and Democratic Services Officer</div> <div>3</div> <div>3</div> <div>Business Officer</div> <div>£5,000</div> <div>3</div>


Social Work Services

Service Director Social Work Services
(CSWO)
£1,000,000 3


Children & Families Social Care	Justice	Social Work Service Strategy	Mental Health	Public Protection	Finance & Information
Head of Children, Families and Justice Services (DCSWO) £500,000 3	Social Work Services Senior Operational Manager Adult Care £500,000 3			Public Protection Manager £100,000 3	Finance & Information Manager £100,000 3




Left – Procurement Training (1 Module)



Right – Budget Holder Training (3 Modules)



Budget Holder



Not a Budget Holder

Children and Families Social Care

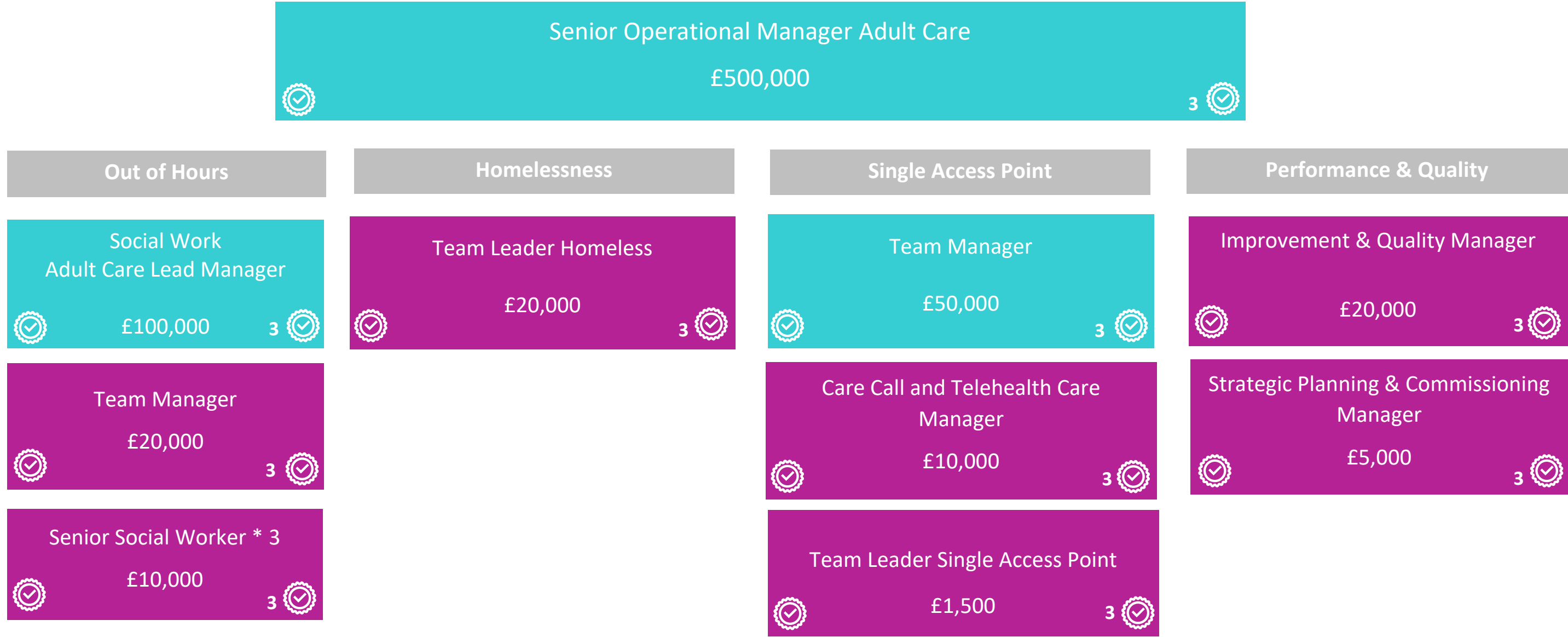


Note – The above structure is currently subject to change following the appointment of the new Depute CSWO.

Justice Social Work



Social Work Strategy



Mental Health

Senior Operational Manager
Adult Care

£500,000

3

Adult Care Lead Manager

£100,000

3

Team Manager

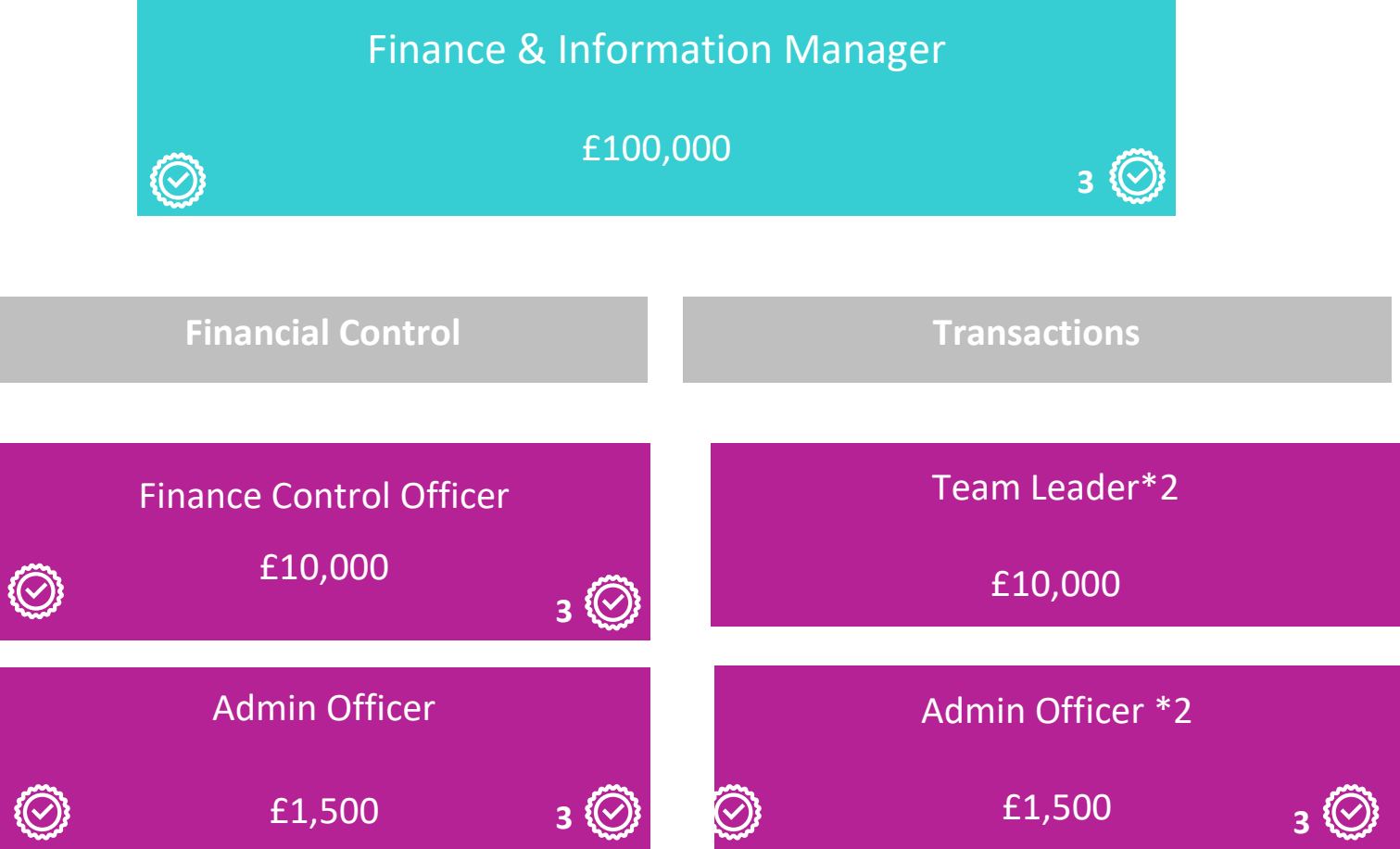
£20,000

Senior Social Worker * 3

£10,000

3

Finance & Information/Transactions



Public Protection

Public Protection Manager

£50,000

3



Community Justice Partnership
Manager

£20,000


3

Violence Against Women and Girls
Co-ordinator

£10,000

3

Lead Officer Public Protection *2

3

✓

Chief Social Work Officer

3

✓

✓

Deputy Chief Officer (NHS)

3

✓

£1,000,000

Management & Governance	Adult Support & Protection	Mental Health Directorate	Adult Services Regional	Short Term Care
✓	Senior Operational Manager Adult Care			3 ✓
✓	Divisional Manager (NHS)			3 ✓
✓	General Manager HSC			3 ✓
£500,000				

Budget Holder

Not a Budget Holder

Mosaic Limits

Locality Manager £93,600

Team Manager/SSW £31,304

Internal Controls exist for care packages greater than £90,000 which require General Manager approval

Note – The overall authorisation approach adopted by the IJB is different to that adopted by the Council, with multiple authorisers across each functional area, reflecting a segregation of budget holder responsibilities for separate activities. This approach results in the same authoriser being reflected in the structure multiple times. Measures to ensure that there is a clear and effective understanding of budget holder responsibility by each authoriser has been confirmed by the Service.

Management & Governance

✔	Senior Operational Manager Adult Care	✔
	General Manager HSC	
✔	£500,000	3 ✔

✔	2 x Social Work Adult Care Lead Manager	3 ✔
✔	Finance and Information Manager	3 ✔
	£100,000	

Adult Support & Protection

✓	Senior Operational Manager Adult Care General Manager HSC	3 ✓
✓	General Manager Mental Health £500,000	3 ✓
✓	2 x Social Work Adult Care Lead Manager £100,000	3 ✓
✓	Social Work Manager Adult Services £20,000	3 ✓
✓	Team Manager Adult Services £10,000	3 ✓
✓	3 x Senior Social Workers £5,000	3 ✓

Mental Health Directorate

✔ ✔	Senior Operational Manager Adult Care General Manager Mental Health	3 ✔ 3 ✔
£500,000		
✔ ✔ ✔	2 x Social Work Adult Care Lead Manager NHS Care Lead Manager Finance and Information Officer	3 ✔ 3 ✔ 3 ✔
£100,000		
✔ ✔	Team Manager Learning Disability Service 1 x Social Work Manager Adult Services	3 ✔ 3 ✔
£20,000		
	2 x Team Manager Adult Services 2 x Senior Day Community and Home Support Services Manager	3 ✔ 3 ✔
£10,000		
✔ ✔	8 x Day Community and Home Support Services Manager 6 x Senior Social Worker	3 ✔ 3 ✔
£5,000		

Adult Services Regional

✓	Senior Operational Manager Adult Care ³	✓
✓	General Manager HSC	3 ✓
£500,000		
✓	2 x Social Work Adult Care Lead Manager	3 ✓
	Divisional Manger for Care and Support at Home	
✓	(NHS)	3 ✓
	Divisional Manager for the Community Bed and	
	Supported Living Division (NHS)	
✓		3 ✓
£100,000		
Principal Manager Support & Reablement Service		
✓		3 ✓
	Deputy Head of Strategic Planning and	
✓	Commissioning (NHS)	3 ✓
✓	Public Protection Manager	3 ✓
✓	Team Manager Adult Services	3 ✓
✓	Public Health Improvement Manager (NHS)	3 ✓
£50,000		
✓	Service Development Liaison Officer	3 ✓
	Contracts manager, Strategic Planning and	
✓	Transformation Directorate (NHS)	3 ✓
	Violence against Women and Girls Co-ordinator	
✓		3 ✓
£10,000		
✓	4 x Area Managers	3 ✓
✓	Lead Officer Public Protection	3 ✓
✓	Senior Telehealthcare Assessor	3 ✓
£5,000		

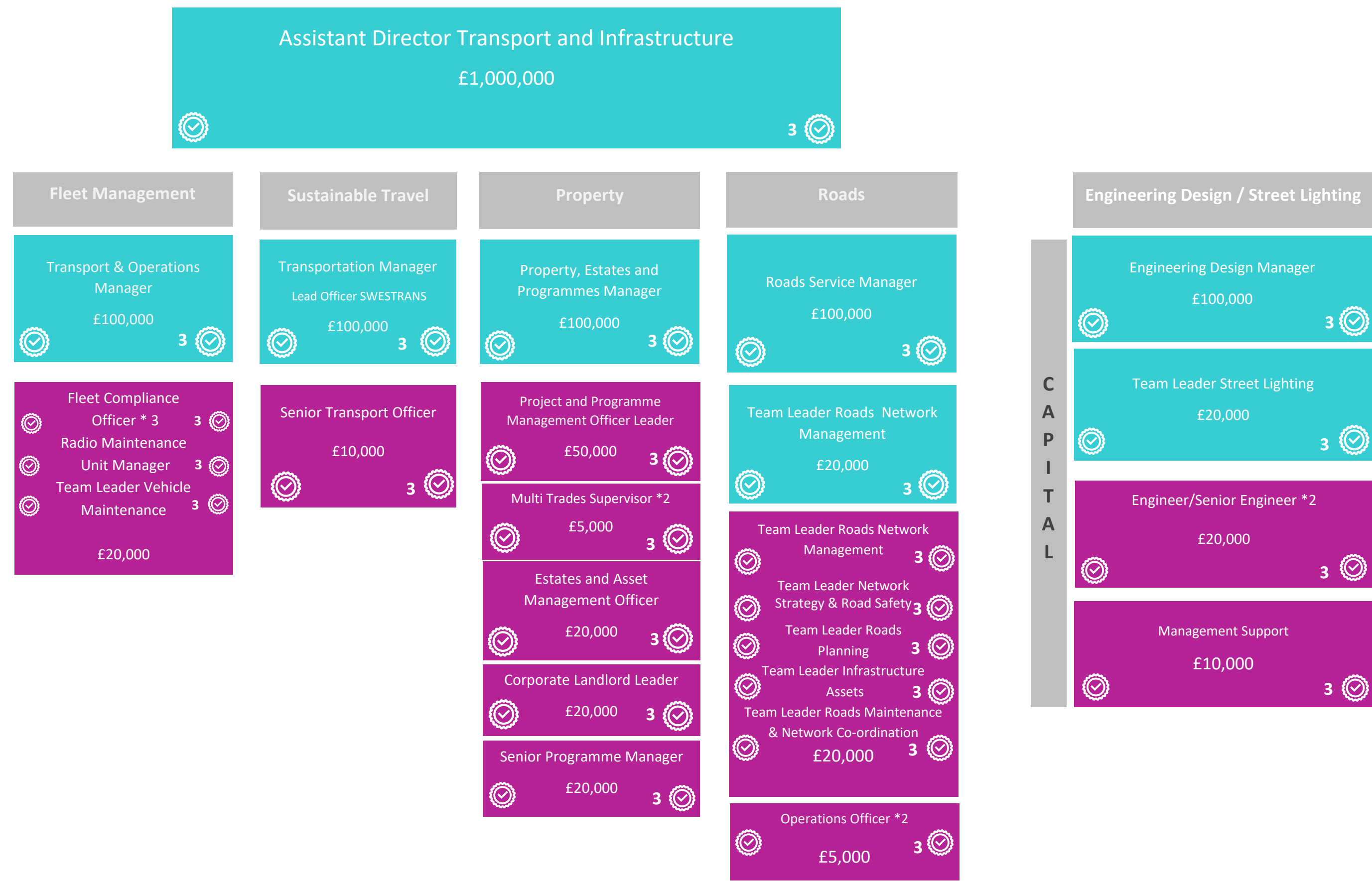
Short Term Care

✓ ✓	Senior Operational Manager Adult Care General Manager HSC	3 ✓ 3 ✓
£500,000		
✓ ✓ ✓	Divisional Manager NHS Service Manager NHS Finance & Information Officer	3 ✓ 3 ✓ 3 ✓
£100,000		
✓ ✓ ✓	2 x Social Work Manager Adult Services 8 x Home Team Lead Lead AHP - Community Health & Social Care Team Manager Adult Services	3 ✓ 3 ✓ 3 ✓
£20,000		
✓ ✓	Team Manager Adult Services Senior Occupational Therapist	3 ✓ 3 ✓
£10,000		
8 x Senior Social Worker		
£5,000		
✓		3 ✓

Economy and Infrastructure



Transport and Infrastructure

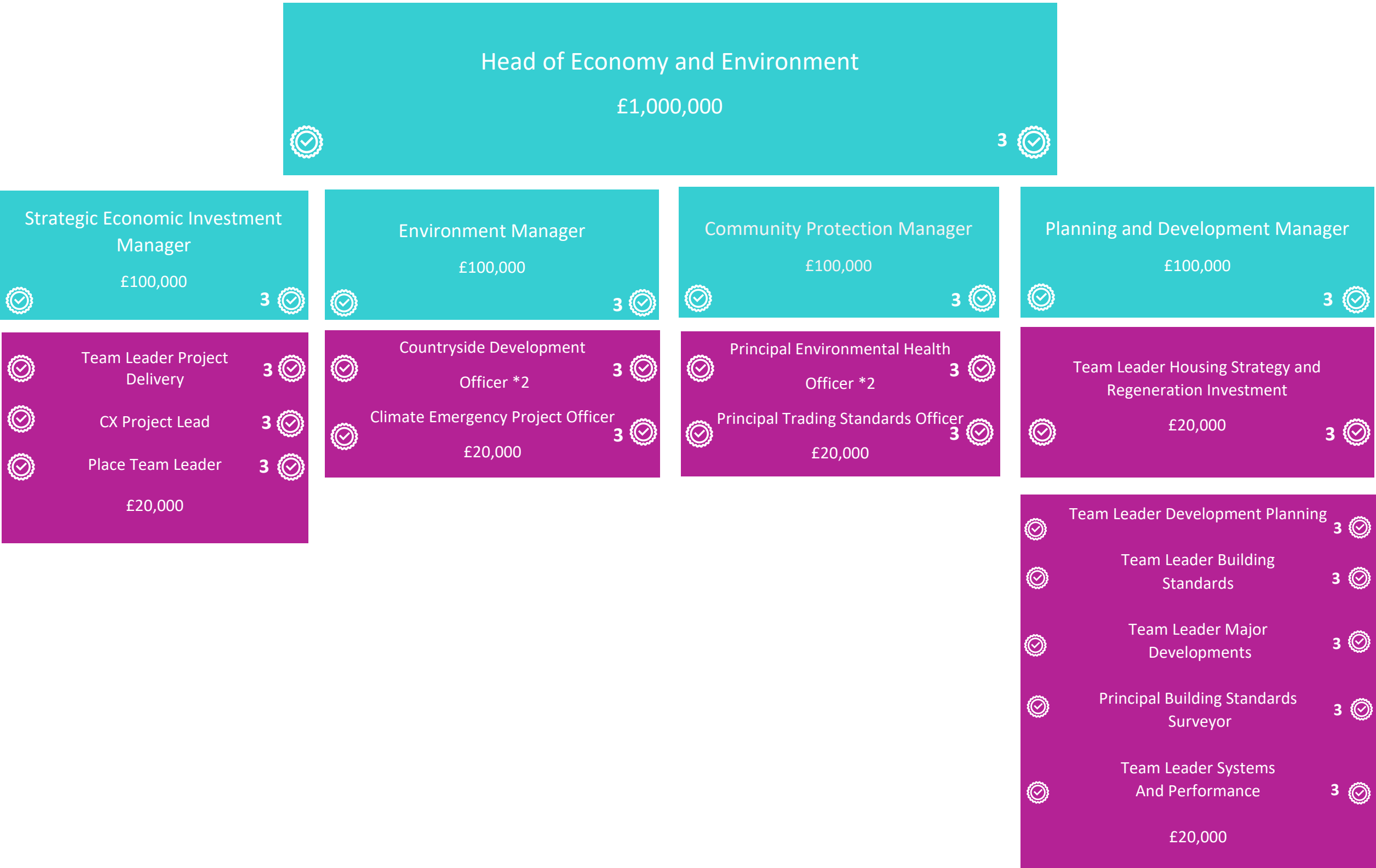


The authorisation level of the Project and Programme Management Officer reflects the specific expenditure requirements of this post - approved by the Chief Financial Officer.

Facilities, Waste and Neighbourhood Services



Economy and Environment



Enabling and Customer Services

Executive Director Enabling and Customer Services

£2,000,000

✓

3

✓

Assistant Director
Governance and Human
Resources

(Monitoring Officer)

£500,000

✓

3

✓

Chief Financial Officer
(Section 95 Officer)

£1,000,000

✓

3

✓

Assessor and Electoral
Registration Officer

£100,000

✓

3

✓

Head of Customer and
Digital

£500,000

✓

3

✓

Directorate Business
Manager

£20,000

✓

3

✓



Left – Procurement Training (1 Module)
Right – Budget Holder Training (3 Modules)

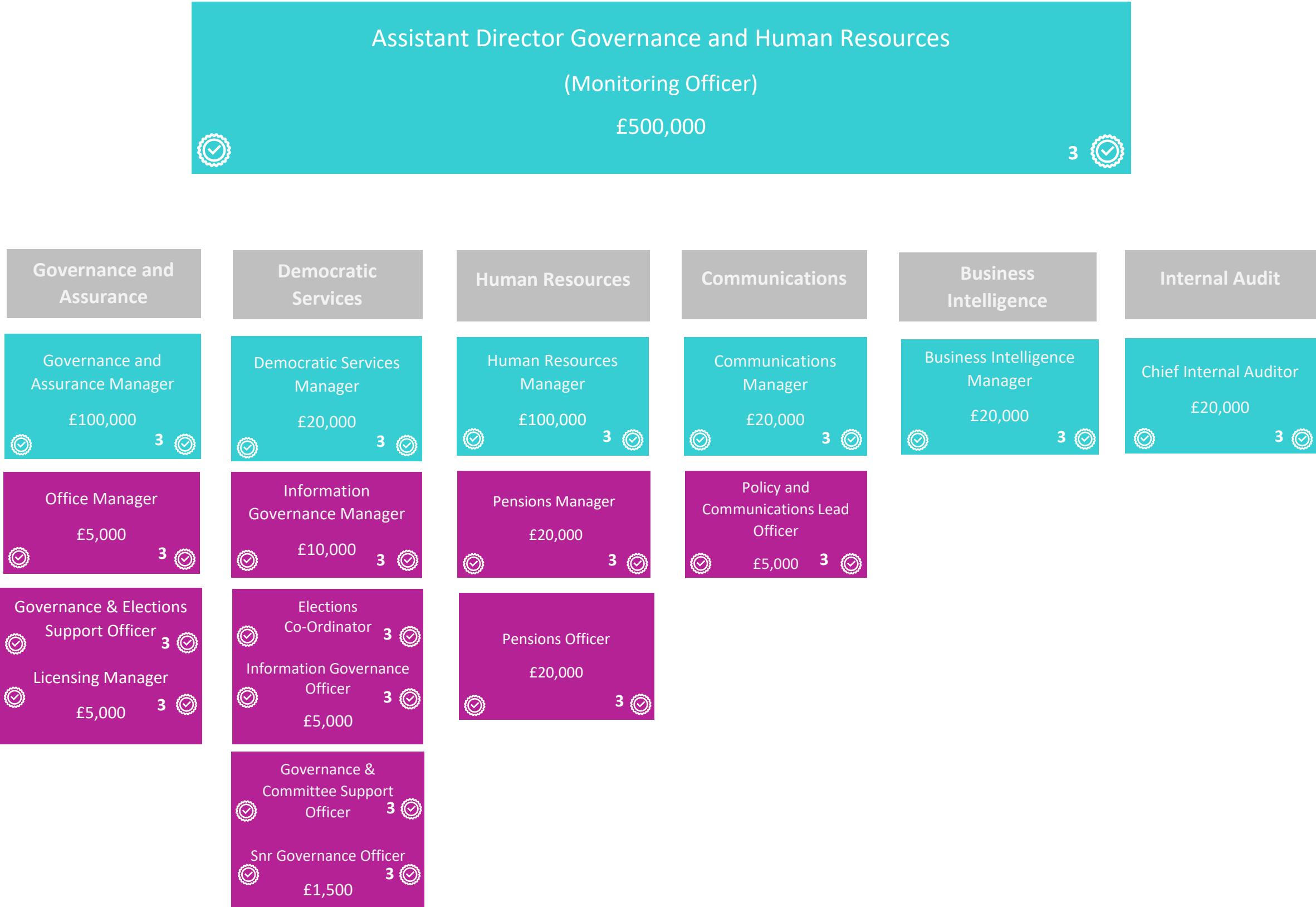


Budget Holder

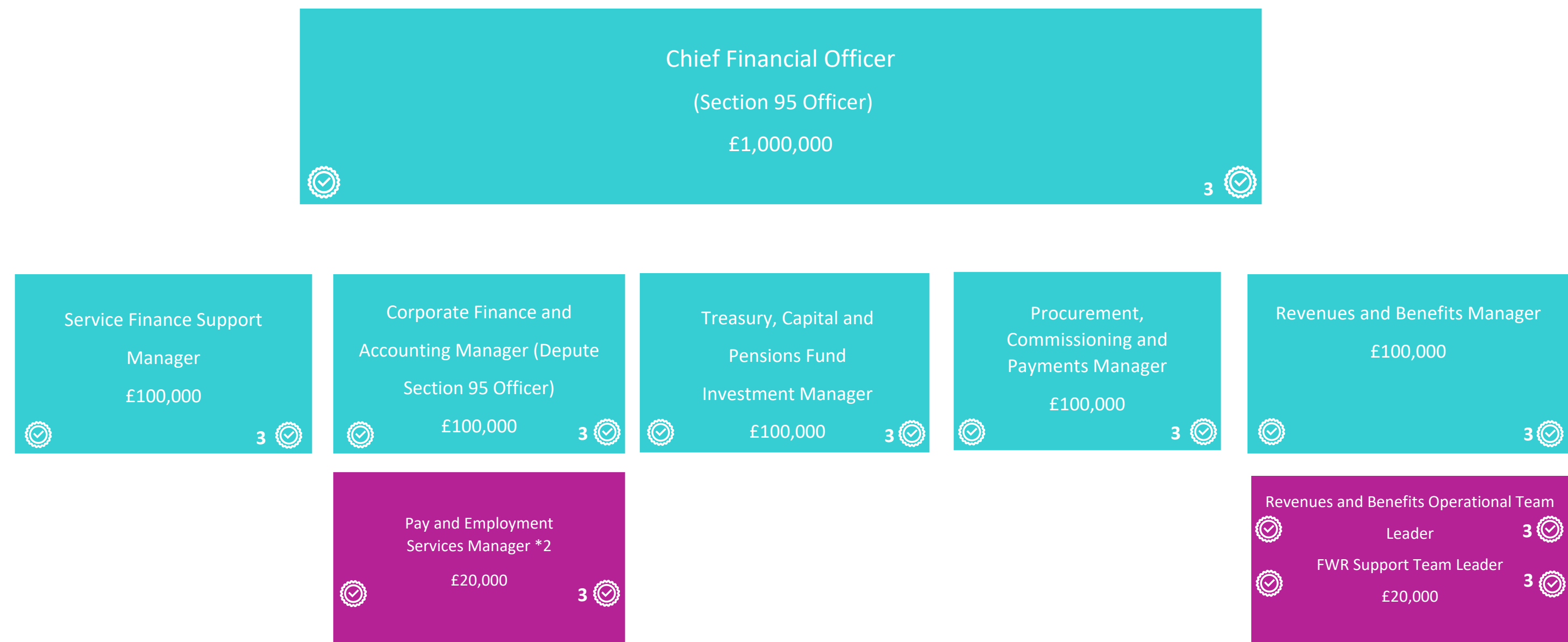


Not a Budget Holder

Governance and Human Resources



Finance & Procurement



The limit above for the Chief Financial Officer does not apply to treasury management transactions for which separate arrangements and limits are agreed annually by Full Council as part of the Council's Treasury Management Strategy

Assessor & Electoral Registration

Assessor and Electoral Registration Officer
(ERO)
£100,000

3

Depute Assessor and Electoral Registration Officer
£20,000

3

Principal Valuer
£20,000

3

Principal Valuer and Assistant
Electoral Registration Officer
£20,000

3

Customer and Digital

